

ORKNEY ISLANDS COUNCIL

MARINE SERVICES

NOTICE TO MARINERS

No 12/2025

Date 02/07/2025

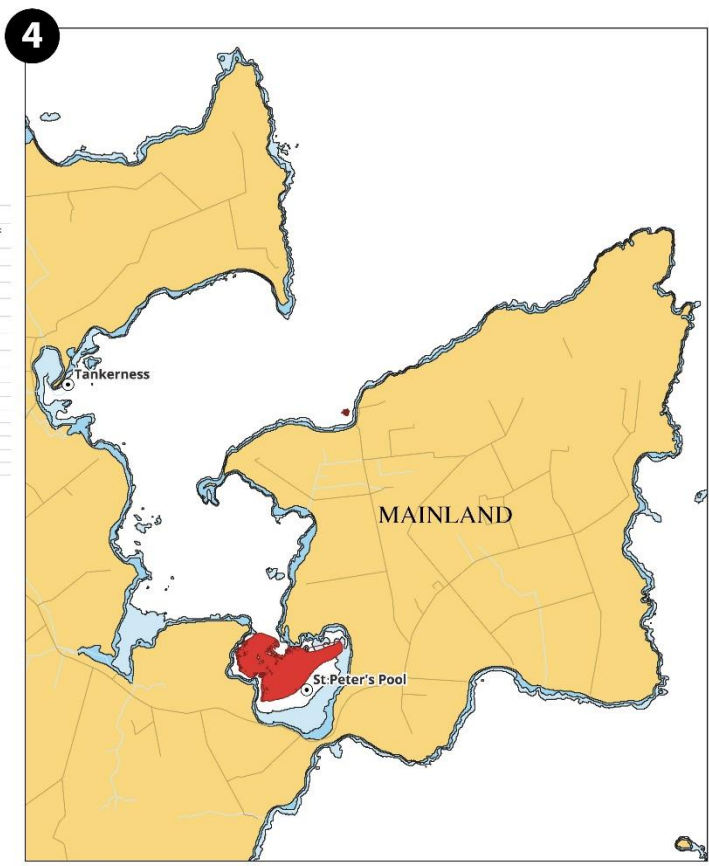
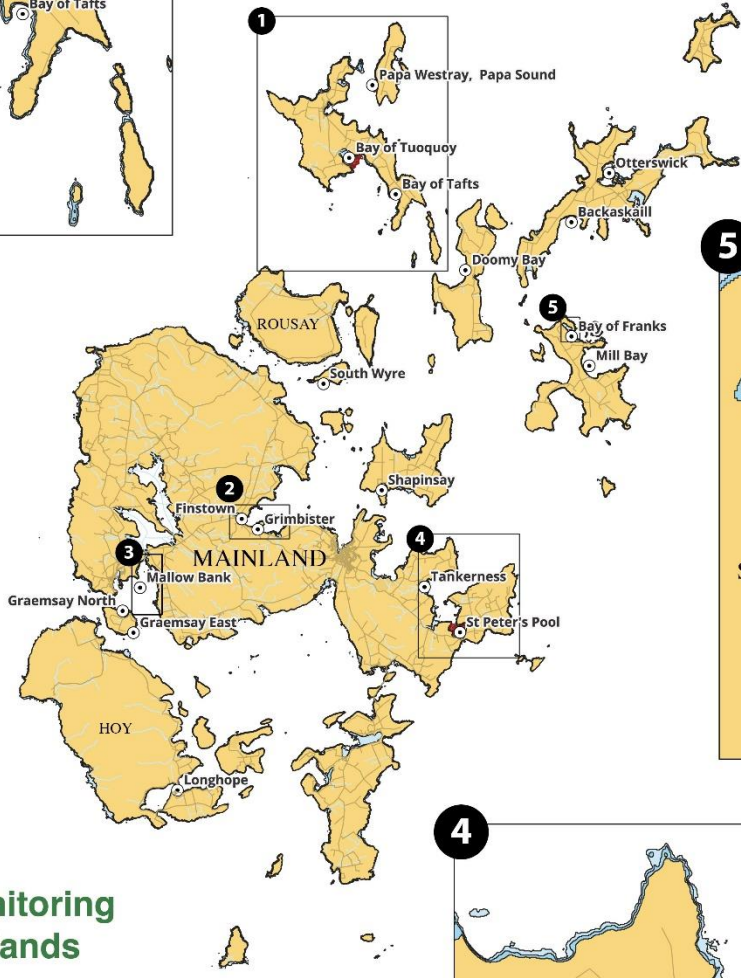
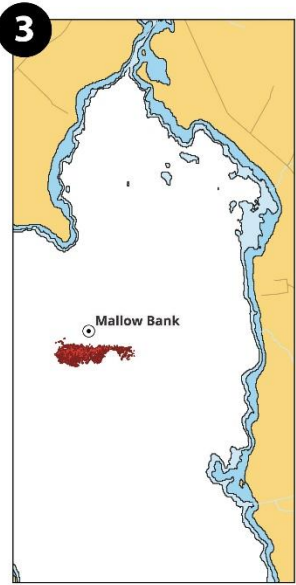
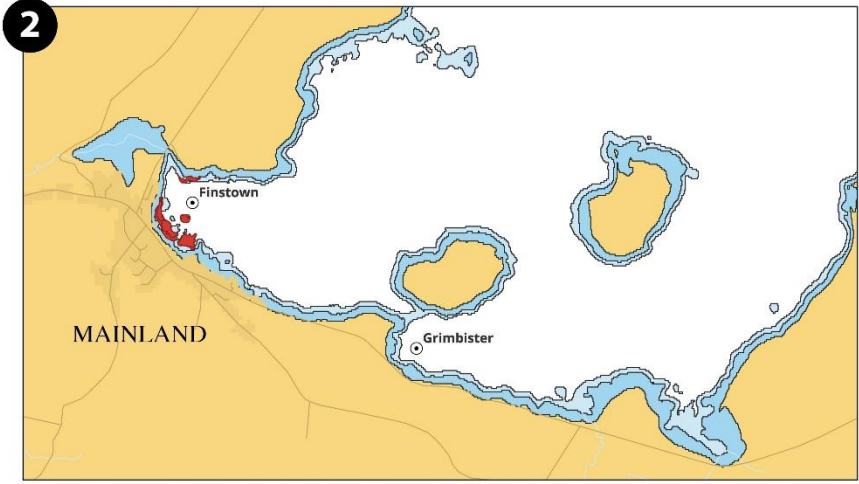
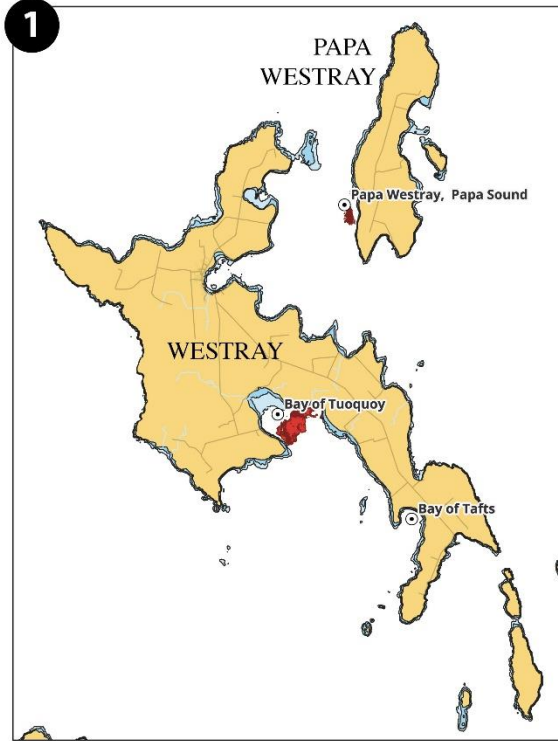
USV Operations Bay of Firth

Project Seagrass will be conducting a survey using an unmanned surface vehicle (USV) within the Bay of Firth and other locations outside of Harbour Limits between the 20th- 25th July 2025.

The USV will be launched from the shore and operating within line of sight, going no more than 500m from the shoreline.

Mariners are advised to navigate with caution.

Jim Buck FRIN
Harbour Master &
Head of Marine Services and Transportation
Harbour Authority Building
Scapa
Orkney



Existing seagrass monitoring sites on the Orkney Islands

Site name	Accessibility
Stronsay, Bay of Franks	With a small boat or inflatable, or a 30 minute walk from the ferry terminal and then a swim out from the shore.
Stronsay, Mill Bay	Swim from the shore is possible, seagrass bed is on right hand side of the shore when looking out at sea from the bay itself. There is car park and picnic area at the bay, which is a short drive or walk from the ferry terminal.
Sandoy, Backaskill	Best accessed by boat
Sandoy, Otterswick	Best accessed by boat, but a long swim is possible if you are good swimmers (Esther did it).
Edoy, Doomy Bay (west side)	This is not very extensive and could probably be accessed from the shore.
South Wyre	Better to be accessed by boat, even though it is quite shallow as it is a tidal area and best to have cover in case anyone got swept off site.
Westray, Bay of Tuuquoy	Accessible from shore and by boat
Westray, Bay of Tafts	Accessible from shore and by boat
Papa Westray, Papa Sound (the roost)	Best to have boat: cover here as it is quite tidal area
Mainland Orkney, St. Peter's Pool	Easy to access by shore at low water seagrass is exposed
Mainland Orkney, Tankerness (couple of different sites)	Bit of a walk to access but could be done and can be snorkelled. For deeper parts of the bed, small boat would be useful for divers.
Mainland Orkney, Finstown	Easily accessible from shore for snorkellers or divers
Mainland Orkney, Grimbister	Accessible from shore for snorkellers or divers
Mainland Orkney, Scapa Flow, Graemsay north	Need to take a boat to get to Graemsay, suggest a small boat best for accessing this bed
Mainland Orkney, Scapa Flow, Graemsay east side	Need to take a boat to get to Graemsay, suggest a small boat best for accessing this bed
Mainland Orkney, Scapa Flow, Mallow Bank	Only accessible by small boat
Hoy, Longhope	Need to check with Eather/RJ

Locations of sites around the Orkney Islands where seagrass mapping and monitoring have previously taken place, to facilitate planning of 2025 Project Seagrass fieldwork.



○ Name and approximate location of existing monitoring site



Digitised polygon of seagrass extent

