

## Notice to Mariners Maritime Safety Information

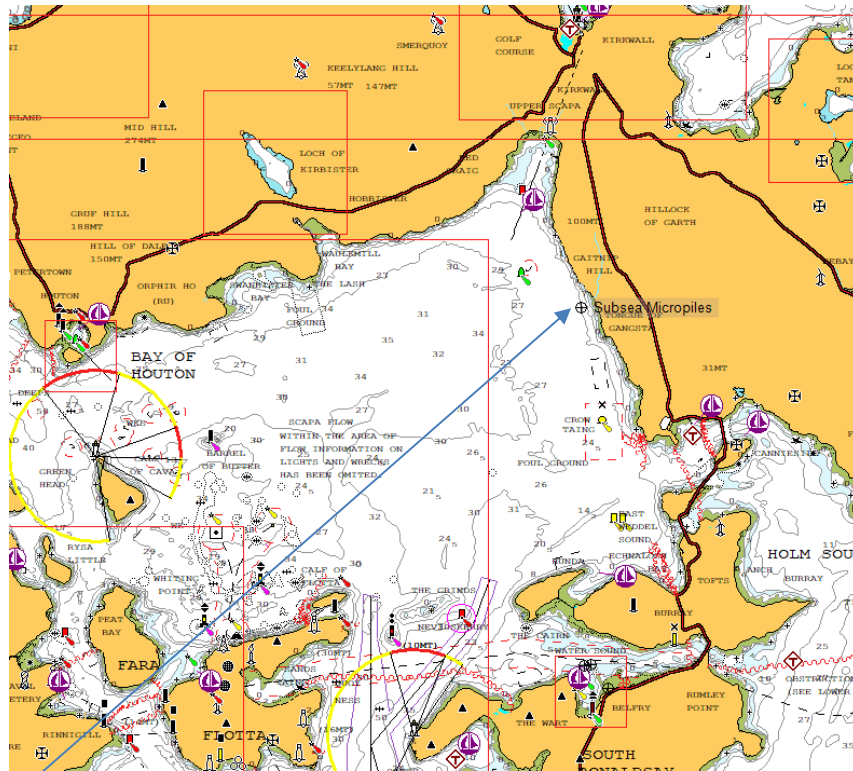
### Client Name/contact details:

Alexandra Thomson  
OrcaDes Marine Management Consultants Ltd.  
+44 (0) 1856 874884  
[alexandra.thomson@orcademarine.co.uk](mailto:alexandra.thomson@orcademarine.co.uk)

### Details:

An anchor will be installed in Scapa Flow (Figure 1), using a robotic seabed drill to install and grout the micropile anchor foundations including diving operations (all diving activity is subject to Orkney Harbour Authority Permit to Work which will be in place prior to operations). Environmental and noise monitoring will also take place during operations from the survey vessel (Challenger).

Multicat vessel (C-Horizon), Barge (CW-10), Survey vessel (Challenger) and support RHIB (Satzoomer) or the Enbarr will be on site for operations. Installation site shown below in Figure 1.



**Figure 1 Site Location**

### Vessels:

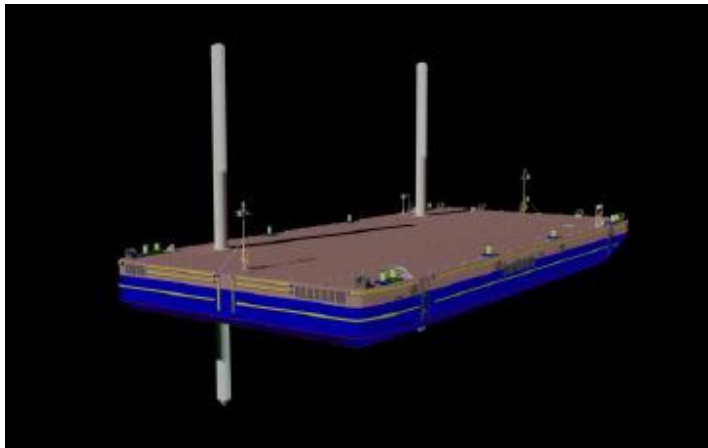
The multicat (C-Horizon) (Figure 2) and The barge (CW-10) (Figure 3) will utilise the pre-installed 4 point mooring spread for installation.



#### Construction/ Classification

Date Of Build	August 2021
Make/Model	Neptune Eurocarrier 2611
DP System	DP 1
IMO Number	9675963
Call Sign	MOSX6
MMSI	232053026
Flag	UK
Port of Registry	Kirkwall

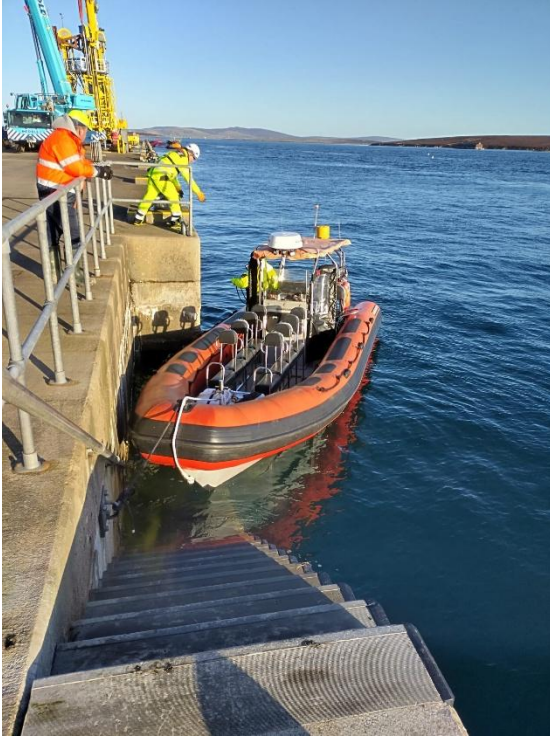
**Figure 2 – C-Horizon**



Dimensions:	40m x 18.8m x 3m
Spudlegs:	2 x 20m x 914mm Ø - crane operated. 4 x spudleg trunkings.
Max deck cargo:	1,350t (TBC) @ 20tm <sup>2</sup>
Sub division:	15 watertight compartments with flush hatches.
Deck equipment:	6no. 20t SWL double bollards, 2no. 100t SWL towing brackets, removable handrails all round. Hydraulic spudleg lifting system available.

**Figure 3 – CW-10**

Other support vessels as follows:



#### **SATZOOMER Specification**

<b>Vessel Type</b>	Vanguard DR760 Commercial Vessel
<b>Port of Registry</b>	Kirkwall
<b>Year Built</b>	2017
<b>Classification</b>	MCA Cat 3R up to 20nm from a safe haven
<b>Length Overall</b>	7.6m
<b>Beam</b>	2.86m
<b>Draft</b>	0.6m
<b>Passengers</b>	12
<b>MMSI number</b>	232058923
<b>Call Sign</b>	MRMF7
<b>Official Number</b>	SSR199708
<b>Engine Make and Model</b>	Mercury Verado 300hp
<b>Auxilliary Engine</b>	Yamaha 15hp
<b>Electronics</b>	Raymarine Plotter, Radar and VHF

**Figure 4 – Satzoomer – standby and support RHIB**



**Figure 5 – Enbarr – standby and support vessel**

Motor Vessel
General Charter and Angling
2DCAB
235077698
LDN601009/86
14 (includes a maximum of 12 passengers)
12.0m
1986
Total of loading of persons and equipment not to exceed 1050kg.
Category 2 (Up to 60 miles from a safe haven)
17kts
IVECO MOTORS N67 ENT M45



- Make: Offshore 105
- Length: 11m
- Beam: 3.4m
- Draft: 1.0m
- Engine: IVECO 430hp
- Coding: MCA Category 3
- Passengers: 10 plus 2 crew
- Accommodation: Wheelhouse with flexible workspace and seating for 4/5 passengers plus 2 crew
- Seating: Padded bench.
- Additional: Challenger comes with a small 4m tender which is suitable for shore landings.

**Figure 6 – Challenge – Survey vessel**

#### **Durations:**

The 4-point mooring spread has been previously installed as per the coordinates shown in the below positions (Table 1) and will stay on site until project completion.

Marine operations will commence 14<sup>th</sup> April 2025. This NtM will be withdrawn on completion of operations and site clearance.

#### **Positions:**

Mooring	UTM	Lat and Long
MC1	502236E 6531467N	58 55.3737'N 002 57.6701'W
MC2	502429E 6531467N	58 55.3737'N 002 57.4690'W
MC3	502237E 6531259N	58 55.2616'N 002 57.6692'W
MC4	502429E 6531261N	58 55.2627'N 002 57.4691'W

**Table1 4-point mooring positions**

Mooring	UTM	Lat and Long
AQ1	502285E 6531332N	58 55.3010'N 002 57.6191'W
AQ2	502238E 6531317N	59 55.2929'N 002 57.6681'W
AQ3	501858E 6531191N	58 55.2251'N 002 58.0641'W

Table 2 Challenger mooring buoy

Point	UTM	Lat and Long
SB1	502538E 6531551N	58 55.4189'N 002 57.3553'W
SB2	502538E 6531140N	58 55.1974'N 002 57.3556'W
SB3	501819E 6531140N	58 55.1976'N 002 58.1048'W
SB4	501819E 6531551N	58 55.4191'N 002 58.1046'W

Table 3 Site Boundary

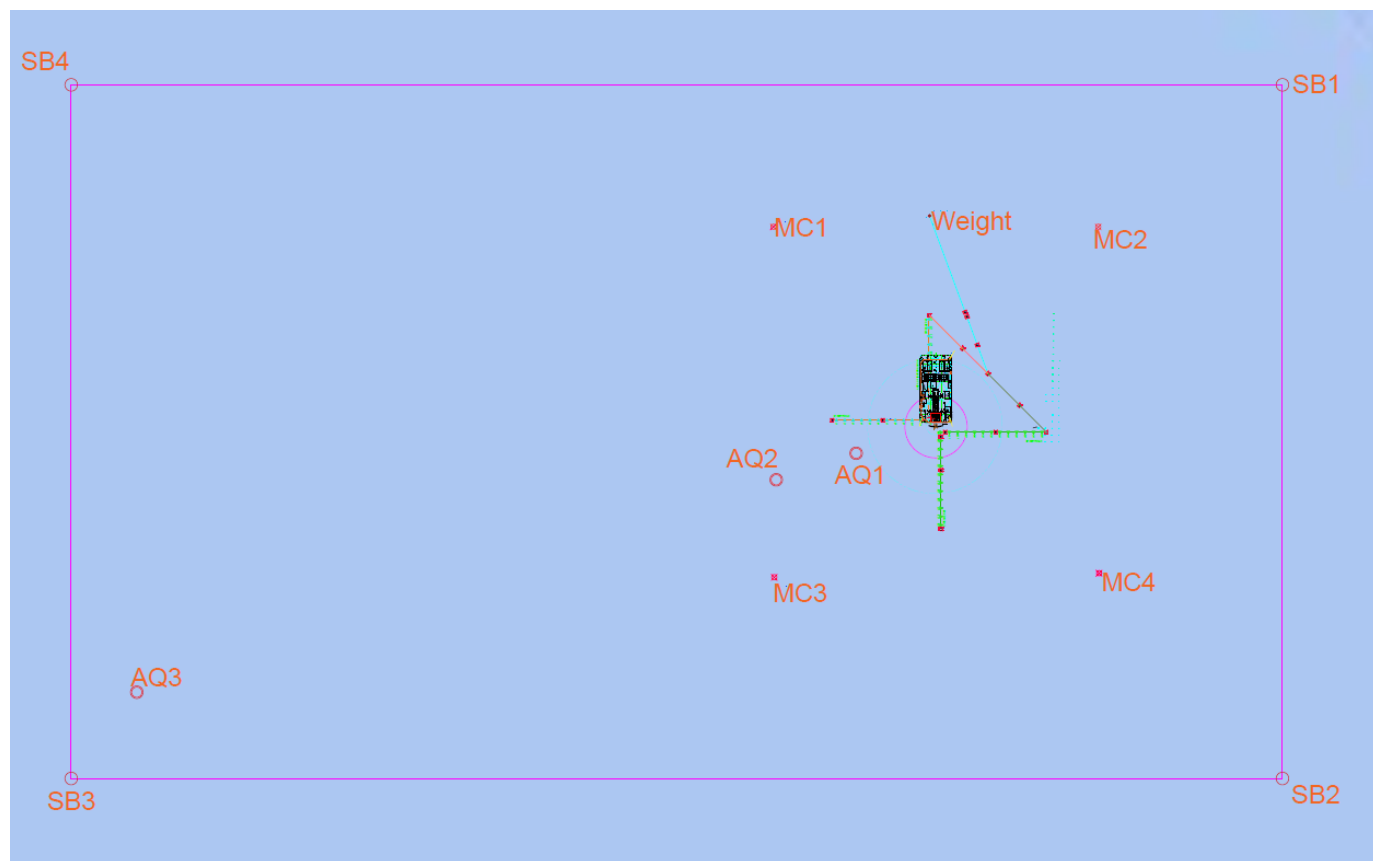


Figure 7 – Site Boundary



**Details of any Lights/buoys or markers**

Mooring buoys (4-point mooring) with flash yellow (FY5s) and vessels will display appropriate lights and shapes as per the Convention on the International Regulations for Preventing Collisions at Sea (COLREGS).

**Instructions to vessels:**

The site boundary positions have been provided in table 3 and vessels are requested to give the area a wide berth and keep a continual listening watch on channels 16 and 6.

Name and Signature  
Alexandra Thomson



Date  
11/04/2025