

NOTICE TO MARINERS

West of Orkney Windfarm

Geotechnical Survey

Rev 01 – Issued: 14/08/2024

This Notice to Mariners shall be updated as the survey progresses.

Summary

- This survey shall take place from 30 August 2024 to 09 September 2024.
- Contact details
 - Onshore FLO: phone: +44 (0) 7926418820, email: OWPLFisheries@xodusgroup.com;
 - Offshore: Phone +45 (0) 60 33 50 18, email bridge.connector@tmsvessel.com
- Name of vessel carrying out the work and towed equipment used: Connector
 - Ultra Short Baseline positioning
 - Deep-push CPTu equipment
- Port of operation: **Scrabster**.

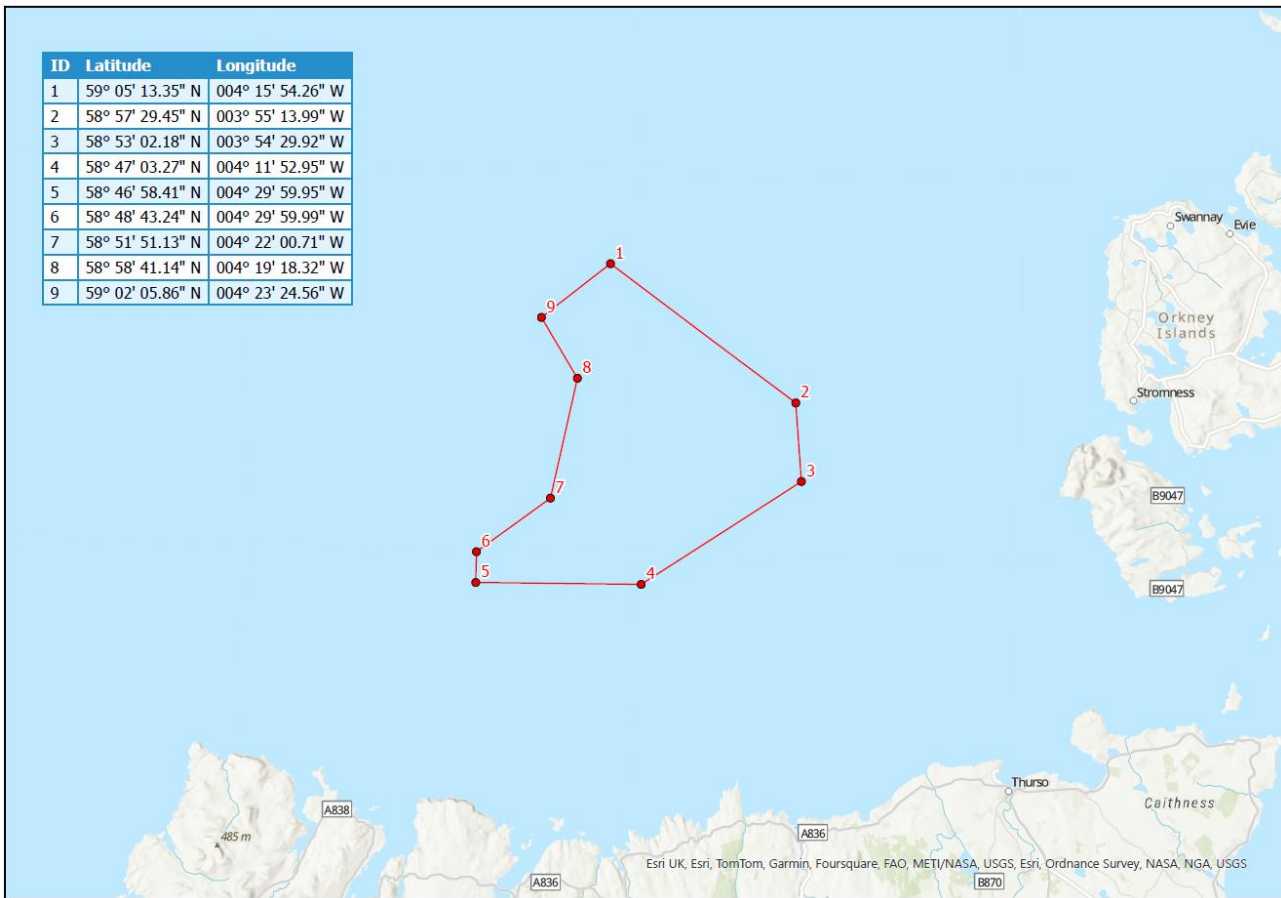


Figure 1. Area to be surveyed within this survey.

Full information

Mariners are advised that a survey vessel and equipment will be used at the West of Orkney Offshore Agreement Area (OAA). Operations will be limited to the OAA.

The geotechnical survey work will be carried out by Contractor: Geo, using survey vessel: Connector.

Vessel information



Vessel	Connector
MMSI	219166000
IMO	6244568
Call Sign	OYOJ2
Owner	Tschudi Ship Management AS
Phone	+45 (0) 60 33 50 18
Email	bridge.connector@tmsvessel.com

During surveying activity within the survey area, the vessel will be static at each test location for 1-2 hours typically and as such have restricted ability to manoeuvre and approaching vessels are requested to pass at a safe speed and distance. The proposed survey is a geotechnical survey to ascertain sub-seabed characteristics.

Project Description

The West of Orkney Windfarm survey will be conducted on behalf of Offshore Wind Power Limited (OWPL).

Geotechnical Survey Task

A geotechnical survey will be carried out at West of Orkney Offshore Agreement Area (OAA) (see Figure 1) and coordinates are provided in Appendix A1.

The geotechnical survey will include use of the following survey equipment within the surveyed area:

- Ultra Short Baseline positioning
- Deep-push CPTu equipment

Mariners are advised to keep a safety clearance of the vessel of no less than 500m.

Port of Operation

Geo with the vessel Connector will mobilise and demobilize from the ports of Peterhead or Aberdeen (tbc) with any interim port calls out of the port of Scrabster.

Survey duration

The survey will commence mobilization on approximately 30 August and should complete demobilization on approximately 09 September 2024. The total duration for the survey activity is expected to be approximately 11 days and additional days have been included in the duration to account for unforeseen operational and/or weather delays.

Contact Details for Fisheries Liaison

Fisheries Liaison is being carried out by Xodus Group, for all fisheries enquires please contact Xodus Group Fisheries Liaison Officer (FLO).

Telephone number +44 (0) 7 926 418820

Email OWPLFisheries@xodusgroup.com

A.1 Coordinates of the survey area

Geotechnical survey	
59° 05' 13.351" N	4° 15' 54.257" W
58° 57' 30.527" N	3° 55' 14.042" W
58° 53' 03.263" N	3° 54' 29.971" W
58° 47' 03.269" N	4° 11' 52.979" W
58° 46' 58.416" N	4° 29' 59.983" W
58° 48' 43.252" N	4° 29' 59.979" W
58° 51' 51.135" N	4° 22' 00.680" W
58° 58' 42.212" N	4° 19' 18.340" W
59° 02' 05.863" N	4° 23' 24.547" W

