

Notice to Mariners- Initial Maritime Safety Information

Marine Operations: Leask Marine Ltd
 Organisation submitting information and for whom the work is being conducted.

Contact Details:
 Operations Director – Olly Bethwaite
 Office – 01856 874725
 Mobile 07966228830

Details of the works programme

Title: Dana Petroleum: Site Survey Operations
Dates: 18-05-2024 to 25-05-2024
Vessel Operation on-site: Glomar Supporter ROV
Location: Scapa Flow Site



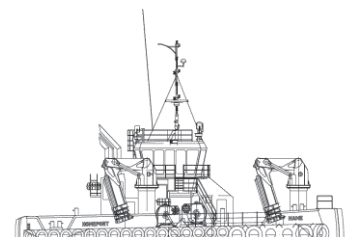
Proposed Vessel Route: Main Vessel Route: Vessel transit from Aberdeen to Scapa Flow Site
 Orkney VTS will be notified of all operations and movements.

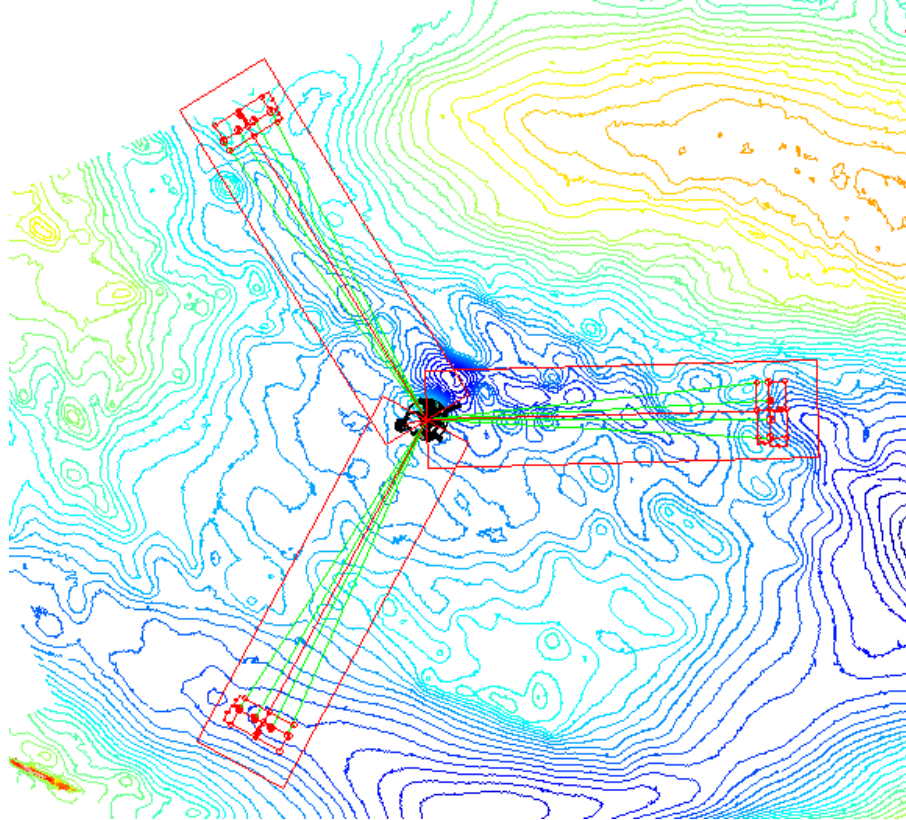
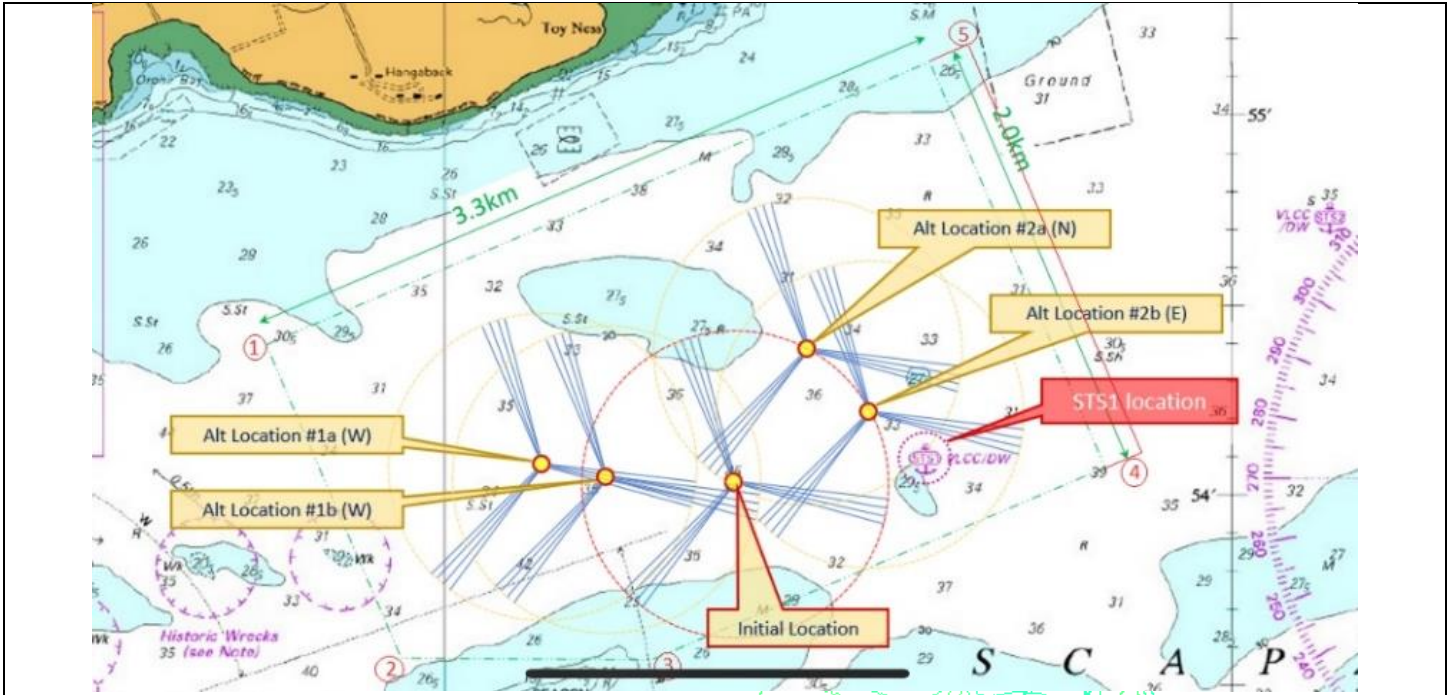
Details of any areas to be avoided: Vessels are requested to maintain a safe distance from working vessels.

Instructions to vessels: Vessels involved will be keeping continuous listening watch on Channel 16 and 6 and will display appropriate lights and marks as required by the International Rules for Preventing Collisions at Sea.
 Mariners are requested to give the works a wide berth.

Positions of the Asset:

Vertex	Lat/Long	Easting	Northing
Cluster 1 - North-West			
1	58°54.193'N, 3°07.778'W	492531	6529284
2	58°54.559'N, 3°08.216'W	492112	6529965
3	58°54.616'N, 3°08.038'W	492283	6530070
4	58°54.250'N, 3°07.601'W	492702	6529389
Cluster 2 - East			
1	58°54.275'N, 3°07.693'W	492613	6529436
2	58°54.288'N, 3°06.860'W	493413	6529459
3	58°54.180'N, 3°06.855'W	493418	6529259
4	58°54.168'N, 3°07.687'W	492619	6529237
Cluster 3 – South- South-West			
1	58°54.196'N, 3°07.599'W	492703	6529289
2	58°53.816'N, 3°07.995'W	492322	6528586
3	58°53.867'N, 3°08.178'W	492146	6528681
4	58°54.247'N, 3°07.783'W	492527	6529384





Name: E.RAMIREZ **Signature:** ERamirez **Date:** 18/05/2024

