

Notice to Mariners

Vessels & General Safety Advice

Scottish Hydro Electric Power Distribution (SHEPD)

Orkney Islands Subsea Inspections – 2023

Date of Issue: 18th August 2023

PROJECT OVERVIEW

Please be advised that Aspect Land & Hydrographic Surveys Ltd (on behalf of SHEPD) will be undertaking subsea inspections of several cables across the Orkney Islands. Please refer to Figure 1 - Figure 7 that highlights each cable location.

Given the different conditions and water depths anticipated at each site, a range of vessels will be utilised across the project, detailed overleaf.

The inspection works will be centred on a 50m cable corridor, defined by the start and end coordinates listed in Table 1.

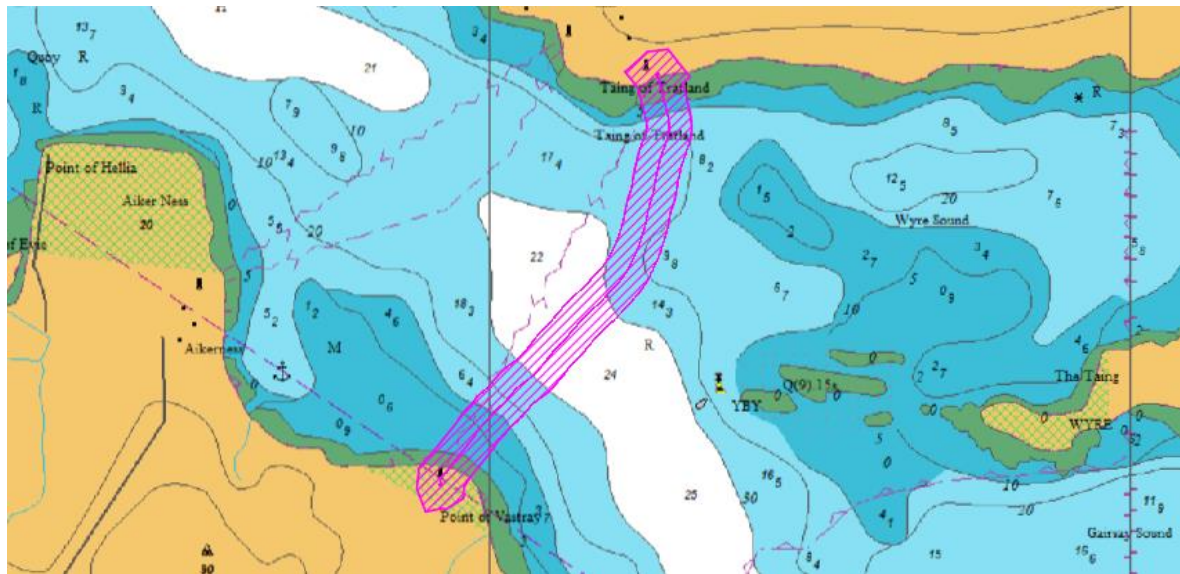
Circuit ID	Cable Name	Start Point		End Point	
		Latitude [WGS 84]	Longitude [WGS 84]	Latitude [WGS 84]	Longitude [WGS 84]
SHEPD_125	Mainland Orkney to Rousay	59°06'39"N	003°03'14"W	59°07'37"N	003°02'13"W
SHEPD_149	Rousay - Westray	59°10'29"N	002°57'22"W	59°14'18"N	002°52'29"W
SHEPD_167	Eday - Westray	59°10'58"N	002°47'56"W	59°14'19"N	002°52'29"W
SHEPD_159	Sanday - Eday	59°12'19"N	002°41'37"W	59°11'26"N	002°45'54"W
SHEPD_153	Shapinsay - Stronsay	59°02'47"N	002°49'54"W	59°05'14"N	002°39'10"W
SHEPD_108	Stronsay - Sanday	59°08'53"N	002°39'00"W	59°12'25"N	002°40'52"W
SHEPD_123	Westray - Papa Westray	59°17'52"N	002°54'56"W	59°19'53"N	002°53'45"W

TABLE 1 - CABLE LOCATIONS & COORDINATES

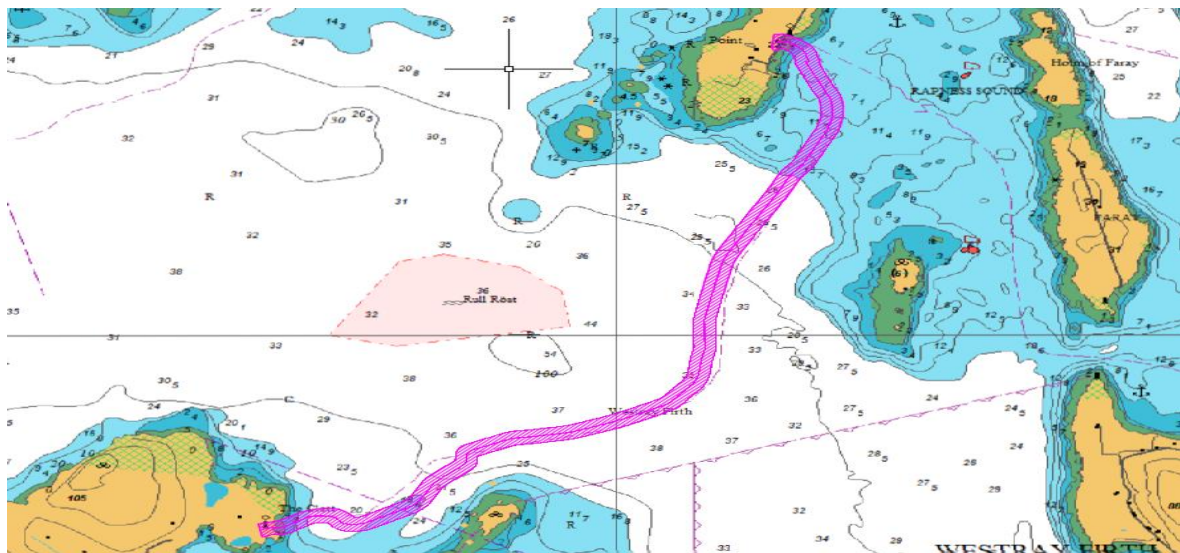
Start dates and anticipated durations listed against each individual location overleaf.

LOCATION DETAILS

Cable location and indicative survey corridors are noted below for information. Equipment calibration operations may take place out with the defined corridor and these areas will be chosen so as not to interfere with fishing / marine traffic activity.

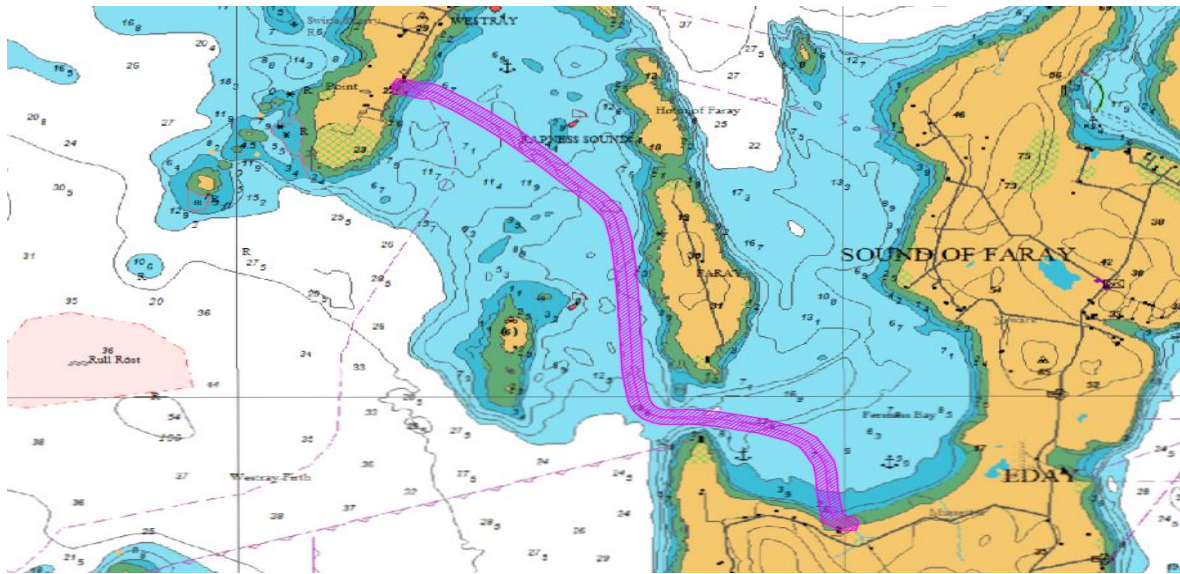
Circuit ID & Location: SHEPD_125 – Mainland Orkney to Rousay


Proposed Dates	Vessel Scope	Vessel(s)
14/08/23 – 31/10/23	Underwater Cable Inspection	Offshore Sensor Marine Sensor Coastal Sensor Coastal Sensor (II)

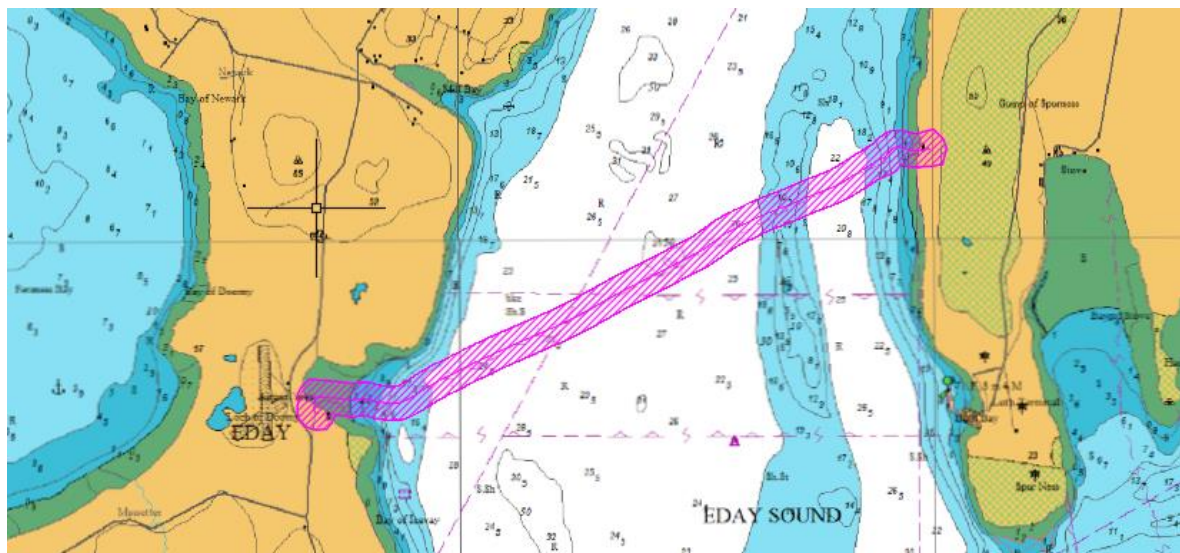
FIGURE 1 – SHEPD_125 – MAINLAND ORKNEY TO ROUSAY
Circuit ID & Location: SHEPD_149 – Rousay to Westray


Proposed Dates	Vessel Scope	Vessel(s)
14/08/23 – 31/10/23	Underwater Cable Inspection	Offshore Sensor Marine Sensor Coastal Sensor Coastal Sensor (II)

FIGURE 2 – SHEPD_149 – ROUSAY TO WESTRAY

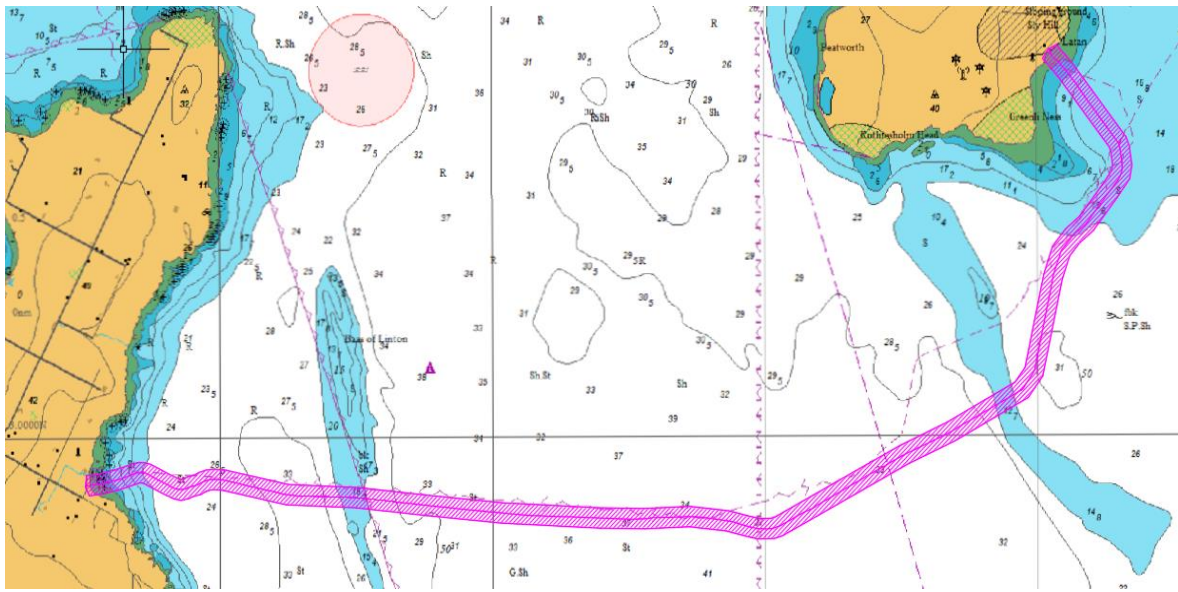
Circuit ID & Location: SHEPD_167 – Eday to Westray


Proposed Dates	Vessel Scope	Vessel(s)
14/08/23 – 31/10/23	Underwater Cable Inspection	Offshore Sensor Marine Sensor Coastal Sensor Coastal Sensor (II)

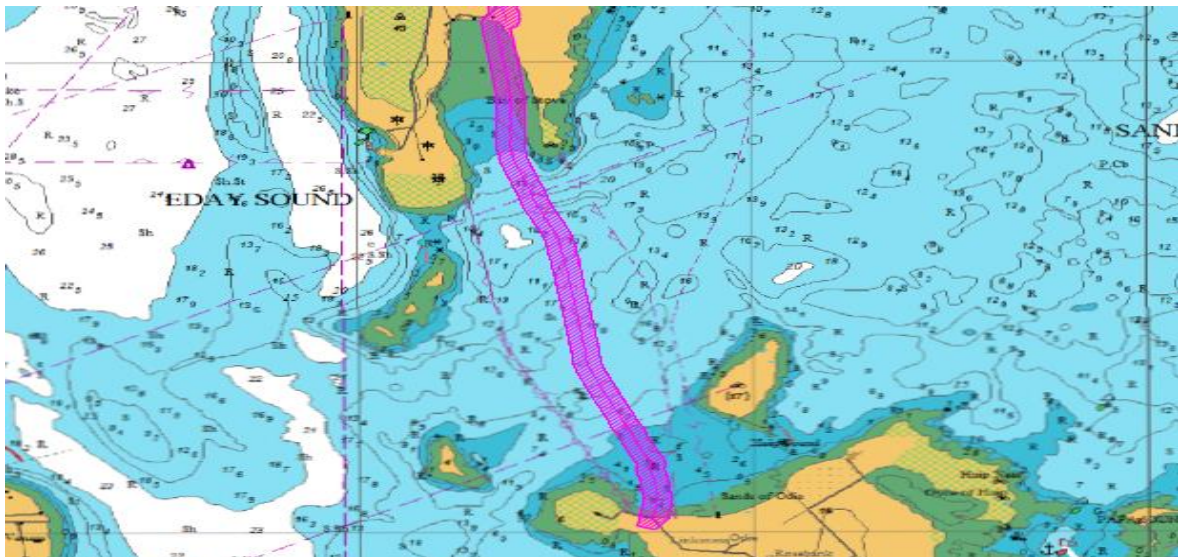
FIGURE 3 – SHEPD_167 – EDAY TO WESTRAY
Circuit ID & Location: SHEPD_159 – Sanday to Eday


Proposed Dates	Vessel Scope	Vessel(s)
14/08/23 – 31/10/23	Underwater Cable Inspection	Offshore Sensor Marine Sensor Coastal Sensor Coastal Sensor (II)

FIGURE 4 – SHEPD_159 – SANDAY TO EDAY

Circuit ID & Location: SHEPD_153 – Shapinsay to Stronsay


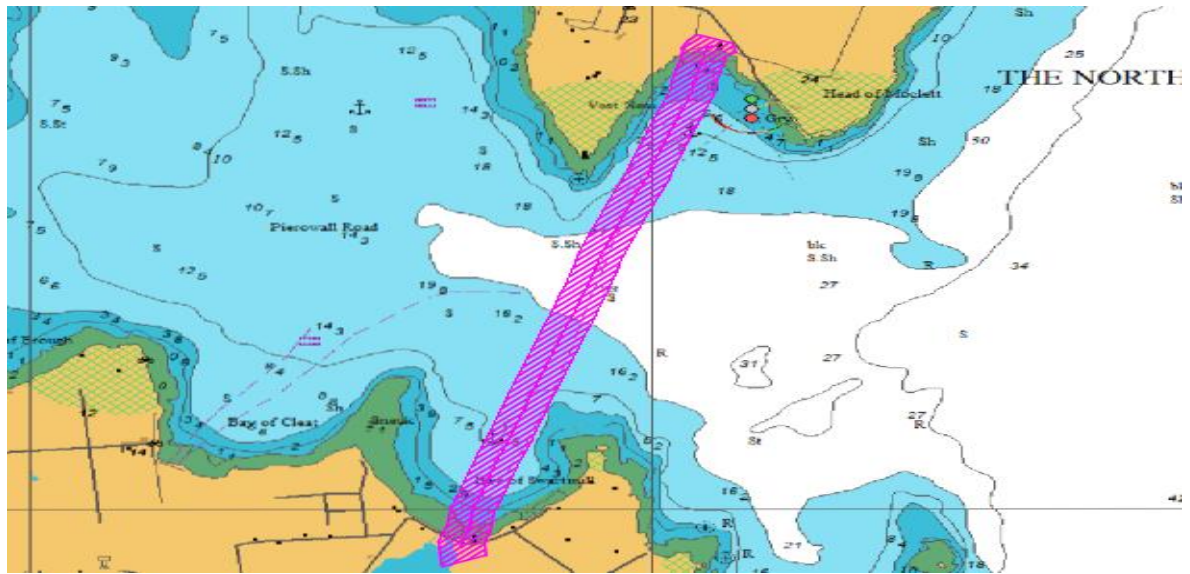
Proposed Dates	Vessel Scope	Vessel(s)
28/08/23 – 31/10/23	Underwater Cable Inspection	Offshore Sensor Marine Sensor Coastal Sensor Coastal Sensor (II)

FIGURE 5 – SHEPD_153 – SHAPINSAY TO STRONSAY
Circuit ID & Location: SHEPD_108 – Stronsay to Sanday


Proposed Dates	Vessel Scope	Vessel(s)
28/08/23 – 31/10/23	Underwater Cable Inspection	Offshore Sensor Marine Sensor Coastal Sensor Coastal Sensor (II)

FIGURE 6 – SHEPD_108 – STRONSAY TO SANDAY

Circuit ID & Location: SHEPD_123 – Westray to Papa Westray



Proposed Dates	Vessel Scope	Vessel(s)
28/08/23 – 31/10/23	Underwater Cable Inspection	Offshore Sensor Marine Sensor Coastal Sensor Coastal Sensor (II)


FIGURE 7 – SHEPD_123 – WESTRAY TO PAPA WESTRAY

VESSEL DETAILS

All vessels to be used during the survey and inspection campaign are owned and operated by Aspect Land & Hydrographic Surveys Ltd. Operations will be limited to daylight hours only.

The vessels conducting these inspections will be restricted in their ability to manoeuvre and will display the appropriate lights and shapes. Other vessels are requested to pass at a safe speed and provide a minimum clearance of 500m (COLREGs Rule 16 & 18) during marine operations.

All vessels will monitor VHF Channel 16 throughout survey operations. Mobile contacts for the vessels are listed at the end of this NtM.

Vessel Photo	Vessel Description
	<p>Offshore Sensor LOA: 22m Beam: 8m Draft: 1.85m Call Sign: MEGQ8 MMSI No: 232019172 VHF: 16</p>

Vessel Photo	Vessel Description
	<p>Marine Sensor LOA: 6.9m Beam: 2.5m Draft: 0.3m Call Sign: MLLR2 MMSI No: 235033255 VHF: 16</p>

Vessel Photo	Vessel Description
	<p>Coastal Sensor LOA: 6.1m Beam: 2m Draft: 0.3m Call Sign: 2BRB2 MMSI No: 235068593 VHF: 16</p>

Vessel Photo	Vessel Description
	<p>Coastal Sensor II LOA: 6.5m Beam: 2m Draft: 0.3m Call Sign: MAMM2 MMSI No: 232005897 VHF: 16</p>

CONTACT DETAILS

Vessel management contact details are given in the table below.

Name & Designation	Organisation	Contact Number	Email
Stephen Scott Project Manager	Aspect Land & Hydrographic Surveys	01294 313 399 07809 440 581	sscott@aspectsurveys.com
Andrew McCormick Fleet Manager	Aspect Land & Hydrographic Surveys	01294 313 399 07796 171 320	amccormick@aspectsurveys.com
Scott Norman HSEQ Manager	Aspect Land & Hydrographic Surveys	01294 313 399 07516 801 268	snorman@aspectsurveys.com
Craig Stephenson Technical Manager	Aspect Land & Hydrographic Surveys	01294 313 399 07780 977 568	cstephenson@aspectsurveys.com
General Office	Aspect Land & Hydrographic Surveys	01294 313 399	mail@aspectsurveys.com

FISHING LIAISON OFFICERS (FLOs)

Fishing liaison for the work is being coordinated by Brown and May Marine (BMM). For any commercial fishery queries please contact the Company Fishing Liaison Officer (CFLO) Alex Winrow-Giffin on 07760 160039 / 01379 872144, alex@brownmay.com.

The local Fishing Industries Representative (FIR) Chris Davidson in Orkney (07810 305100/cad17@hotmail.co.uk) will also be in place to liaise with vessels and fishing operations. The FIR shall liaise directly with commercial fishery interests to advise of any fishing gear clearance requests.

LEGAL NOTICE

Please be advised that this Notice to Mariners should be treated as official notice of the nature, duration and location of the works which are scheduled to take place. During the period of this notice, we request that you plan your activities around our short-term, temporary activities.

Any failure to remove equipment or entry into the identified location in a manner that would constitute a hazard would be a breach of your duties of safe seamanship as described in the Convention on International Regulations for Preventing Collisions at Sea 1972 and/or the Merchant Shipping Act 1995, and may result in removal of the relevant equipment. Failure to remove equipment or entry into the identified location in a manner that would constitute a hazard may constitute a breach of duty of care at common law, and a failure to protect

submarine cables for successful seabed user co-existence under Scotland's National Marine Plan.

SSEN shall found on this notice in the event of any damage, loss or disruption arising from failure to heed the information herein.

DISTRIBUTION LIST

The Distribution List of the Notice to Mariners is as per the stakeholder list in the SHEPD Fisheries Liaison and Management Action Plan (FLMAP).