

Notice to Mariners

Daniel Wise
Innovation Centre
Hatston
01856 851641
d.wise@orbitalmarine.com



NOTES

Coordinate System: World Geodetic System 1984 [WGS84]
Marine Licence – 07168/20/0

Details of works programme including period & purpose

TIDAL TURBINE OPERATIONS – Towage and Lifting at Hatston Pier Berth 3 – May 19th to May 23rd

Operations: Installation of temporary anchors in vicinity of Berth 3 Hatston

Dates: 19th May through to 23rd May

Vessel: C Fenna –Operated by Leask Marine Call sign MBAH3

Anchor Location A – 2m contour inshore Hatston @ 58° 59.965N 02° 58.650W – Yellow mooring can with light Flashing yellow light 1FY5s (range 1nm)

Anchor Location B – 3m contour inshore Hatston @ 58° 59.964N 02° 58.558W – Yellow mooring can with light Flashing yellow light 1FY5s (range 1nm)

Anchor Location C – 3m contour inshore Hatston @ 58° 59.933N 02° 58.558W – Yellow mooring can with light Flashing yellow light 1FY5s (range 1nm)

Anchor Location D – 10m contour inshore Hatston @ 58° 59.828N 02° 57.767W – Yellow mooring can with light Flashing yellow light 1FY5s (range 1nm)



Operations: Tow Start Deer Sound to Hatston Berth 3 via the String

Timing:

Move O2 Deer Sound to Kirkwall Bay 19th May 12:30 to 15:00

Move O2 to Anchor D off Crow Ness 19th May 15:00 to 20:30

Move O2 from Anchor D to Hatston Berth 3 19th May 20:30 to 22:30

Tow Vessel: C Fenna –Operated by Leask Marine Call sign MBAH3

O2 Turbine AIS AtoN MMSI No : 992351345

O2 Turbine AIS AtoN Name : O2 Tidal Turbine

Support vessels (any of): Straumr; Efja; C Defender; Miss Demure; Line runners

Operations: Berthing O2 turbine at Berth 3 Hatston, turbine movements within berth 3 area

Dates: 19th to 23rd May

Positions of maximum extent of projected works

This position marks the O2 turbine where the tow will commence at Deer Sound

UTM 30N_511306,6535371

58° 57.469'N 02° 48.207'W

Towing plan will be through Shapinsay Sound and into Kirkwall Bay via the String. The vessel will revert the tow to towing alongside within Kirkwall Bay in clear sea room to do final passage into the berth 3 on the hip.

All Mariners are asked to give the tow and works a wide berth

Mariners are asked to pass the area adjacent to Hatston Berth 3 at such a speed as to create minimal wake

Lifting and Diving operations will commence between 19th May and May 23rd at Hatston berth 3

Details of lights, buoys and other navigational aids

O2 Turbine will exhibit a towing diamond at the most forward and most aft section of the turbine.

C Fenna will exhibit a towing diamond

Should towing operations carry on beyond daylight:

The O2 will be marked by fixed white all round light and the forward and aft end of the tow.

C Fenna will exhibit towing lights

O2 Marking at Mooring / Hatston Berth 3

The turbine will be predominantly yellow in colour and has a freeboard of 1.5m.

Character of Light	:	2 x synchronised Fl. Y. 3s
Range of Light	:	3 nautical miles
Elevation of Light	:	5 metres above waterline
Note (Light)	:	One light at each end of the device (73m length x 60m beam)
Colour of Device	:	Yellow above the waterline

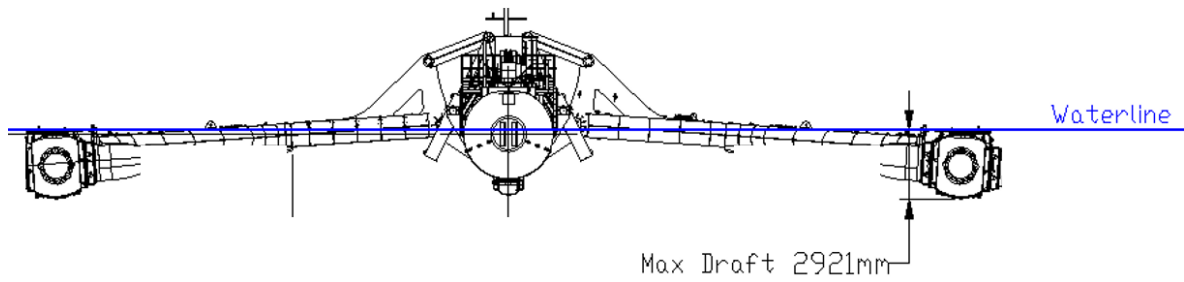
AIS AtoN MMSI No	:	992351345
-------------------------	---	-----------

AIS AtoN Name	:	O2 Tidal Turbine
----------------------	---	------------------

Two radar reflectors situated at either end of the turbine to provide a clear radar presence.

Details of any areas to be avoided

Towing/berthing configuration will have blades removed giving a total beam of 40m
40m beam



INSTRUCTIONS TO VESSELS

VTS will be informed of all movements.

Vessel will maintain listening watch on CH16 and CH11 at all times.

Please give the operations a wide berth and reduce vessel wake when in vicinity of berth 3 at Hatston during operations.

Name:	Daniel Wise		DW	Date:	16/5/23
--------------	-------------	--	----	--------------	---------