
NOTICE TO MARINERS

Notice of activities associated with survey operations for the Pentland Floating Offshore Wind Farm (PFOWF)

Date of Issue	03.05.2023	Notice Number	Rev.04
----------------------	-------------------	----------------------	---------------

Please be advised that Geoquip Marine Operations AG will be performing geotechnical operations in the form of soil investigation at Pentland Offshore Floating Wind Farm.

The vessel Dina Polaris will conduct operations within the period 01 May 2023 to 26 May 2023. The total duration of operational time at the site is estimated to be approx. 25 days. Please note, that the works may incur periods where the vessel is not operating, and that the finalisation of the project can be delayed. Additions to the scope of work by performing 'optional locations' will also cause delays in the project timeline.

During this survey the vessel will be deploying survey equipment at which times the vessel might have restricted ability to manoeuvre and approaching vessels are requested to pass at a safe distance and speed.

CONTACT INFORMATION

Any enquiries regarding survey activity can be directed to the following contact:

Name Jack Harmon
Title Senior Project Manager
Company Geoquip Marine
Mobile +44 7477 797327
Email Jack.harmon@geoquip-marine.com

Enquiries relating to fisheries co-ordination can contact Brown & May Marine Ltd on the following.

Name **Email**
Alex Winrow-Giffin alex@brownmay.com
Morgan Lord morgan.lord@brownmay.com

SITE PLAN

The location where work will be performed is indicated on the Figure 1 and Figure 2 below.

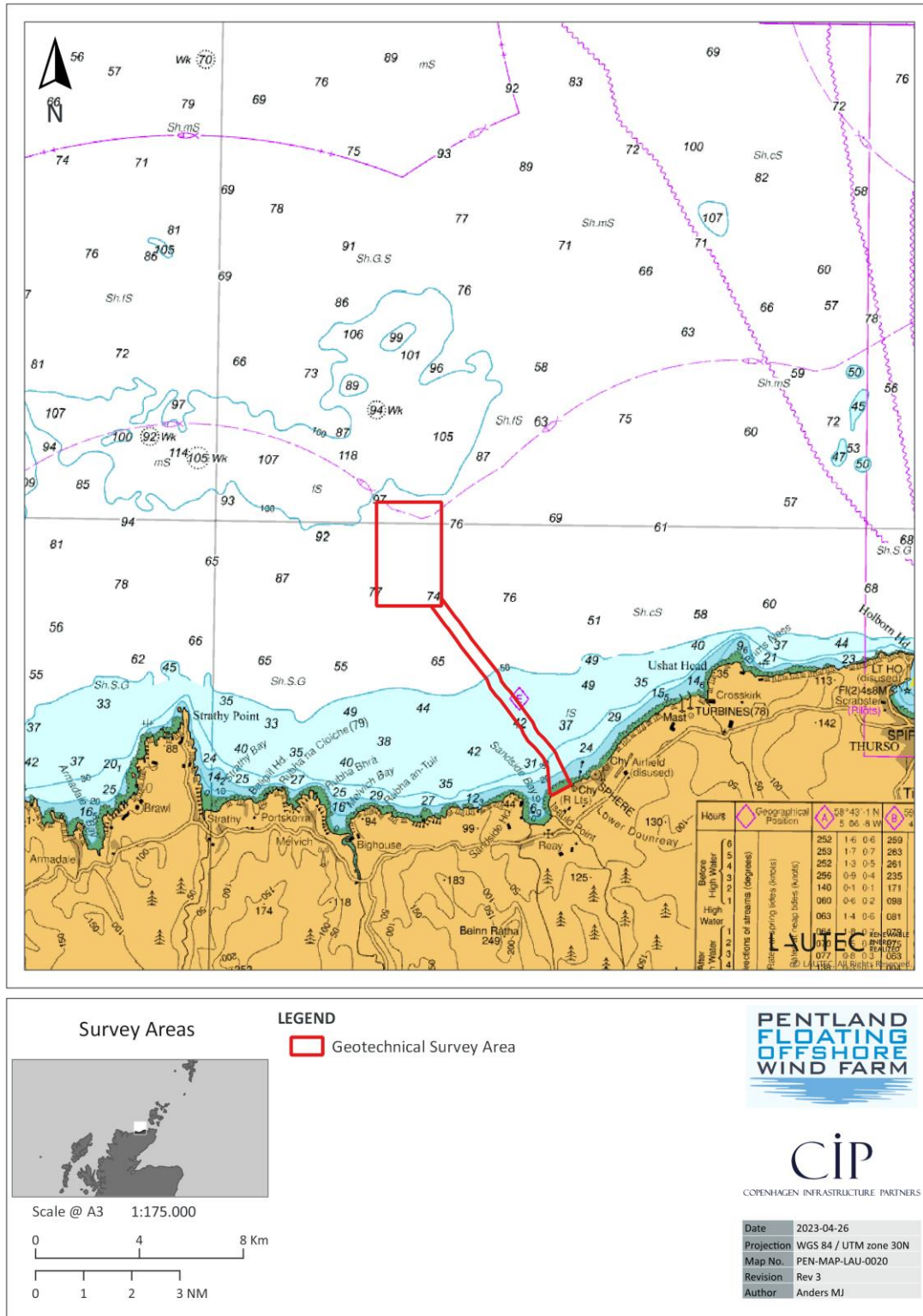
Coordinates for the geotechnical locations are provided in Table 1 as Eastings and Northings and Latitude and Longitudes in DDM and DMS format.

INVESTIGATION PLAN

The scope is indicative; however, it is envisaged that up to 15 sampling/PCPT/composite boreholes will be drilled during the investigation, one of which will be located within the FEPA zone outlined in Figure 2. The scope is split between “Base Scope” and “Optional” locations. Optional location will be chosen based on data requirements and time and have the potential to extend the scope by up to 10 no. locations. The borehole termination depths will be determined based on encountered ground conditions however it is understood that the boreholes will be drilled up to 5.0 m into competent rock.

The vessel will be stationary on each location as shown in Table 1.

MAP



G:\Shared drives\Project work\GIS\Pentland\2_Working_Data\20220512-Rebecca-SiteNauticalChart\Pentland_geophys_overview_nauticalchart.qgz

Figure 1 General Overview Map

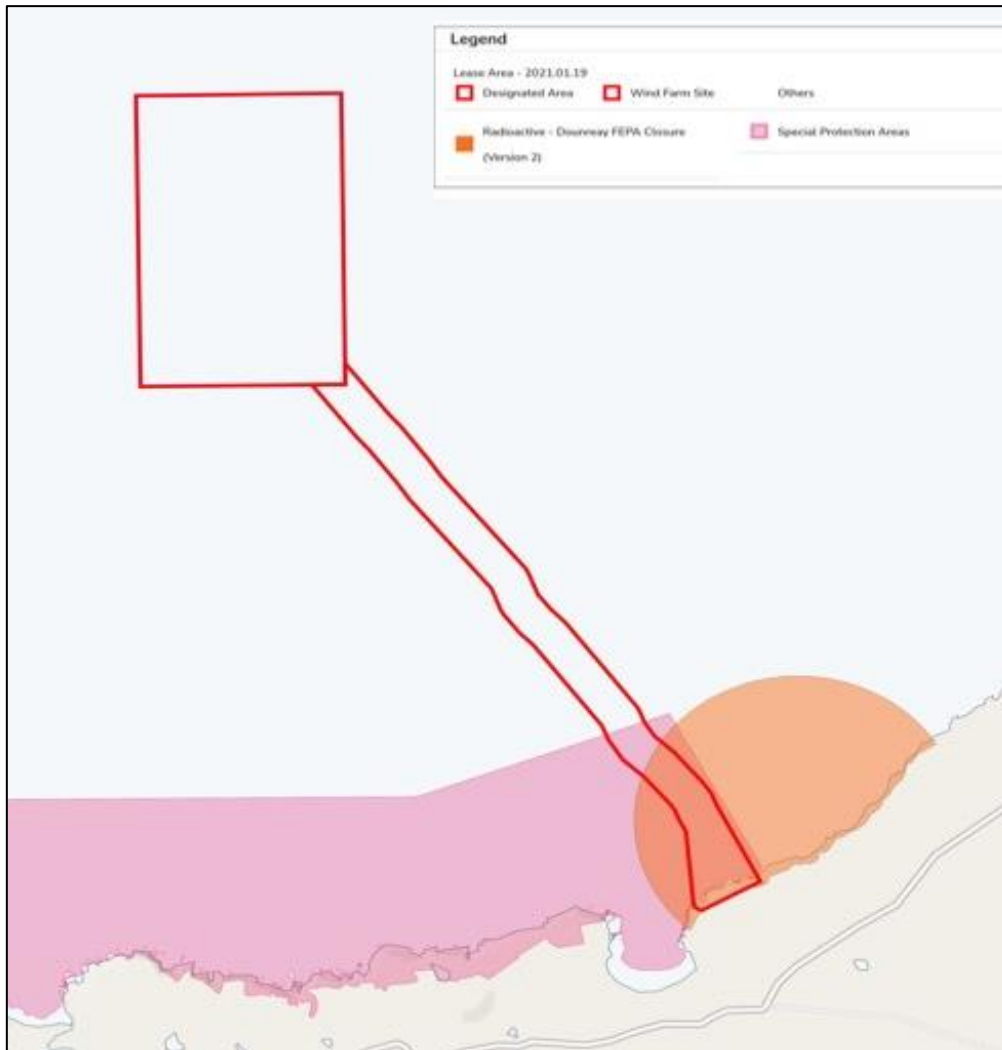


Figure 2 **Project Site Map**

SUMMARY OF GEOTECHNICAL LOCATIONS

Table 1 Target Location Co-ordinates

ID	Type	Easting	Northing	DDM		DMS	
				LATITUDE (N)	LONGITUDE (W)	LATITUDE (N)	LONGITUDE (W)
2023_P_A_BH_301	BH	448439.760	6500752.090	58°38.639'	3°53.298'	58°38'38.35"	3°53'17.91"
2023_P_A_CPT_301	CPT	448440.790	6500750.090	58°38.638'	3°53.297'	58°38'38.286"	3°53'17.844"
2023_P_A_BH_302	BH	450445.752	6501656.752	58°39.141'	3°51.237'	58°39'8.438"	3°51'14.223"
2023_P_A_CPT_302	CPT	450447.800	6501658.799	58°39.142'	3°51.235'	58°39'8.505"	3°51'14.098"
2023_P_A_BH_303	BH	450444.269	6502400.028	58°39.541'	3°51.248'	58°39'32.466"	3°51'14.902"
2023_P_A_CPT_304	CPT	450444.302	6503742.898	58°40.265'	3°51.266'	58°40'15.879"	3°51'15.961"
2023_P_A_BH_304	BH	450442.332	6503740.897	58°40.264'	3°51.268'	58°40'15.814"	3°51'16.082"
2023_P_A_CPT_305	CPT	449941.884	6502845.914	58°39.778'	3°51.774'	58°39'46.673"	3°51'46.427"
2023_P_A_BH_306	BH	448943.358	6503674.170	58°40.217'	3°52.818'	58°40'13.03"	3°52'49.058"
2023_P_A_CPT_306	CPT	448945.705	6503676.178	58°40.218'	3°52.815'	58°40'13.096"	3°52'48.914"
2023_P_A_CPT_307	CPT	448444.719	6501877.683	58°39.238'	3°53.309'	58°39'14.74"	3°53'18.527"
2023_P_A_BH_307	BH	448442.766	6501875.675	58°39.245'	3°53.311'	58°39'14.675"	3°53'18.646"
2023_P_A_BH_308	BH	448943.458	6502246.944	58°39.448'	3°52.798'	58°39'26.89"	3°52'47.889"
2023_P_A_CPT_308	CPT	448945.708	6502248.882	58°39.449'	3°52.796'	58°39'26.954"	3°52'47.751"
2023_P_A_BH_309	BH_O	449444.364	6500963.161	58°38.760'	3°52.263'	58°38'45.599"	3°52'15.78"
2023_P_A_BH_310	BH_O	450443.752	6500372.225	58°38.449'	3°51.222'	58°38'26.91"	3°51'13.333"
2023_P_A_CPT_311	CPT_O	450446.209	6502402.089	58°39.542'	3°51.246'	58°39'32.534"	3°51'14.783"
2023_P_A_CPT_312	CPT_O	449440.714	6503073.037	58°39.897'	3°52.295'	58°39'53.806"	3°52'17.706"
2023_P_A_BH_313	BH_O	448437.771	6503073.555	58°39.890'	3°53.332'	58°39'53.398"	3°53'19.941"
2023_P_A_CPT_314	CPT_O	449441.823	6502392.319	58°39.530'	3°52.285'	58°39'31.8"	3°52'17.089"
2023_P_A_CPT_315	CPT_O	448941.300	6501503.033	58°39.047'	3°52.790'	58°39'2.84"	3°52'47.418"
2023_P_A_CPT_316	CPT_O	448941.958	6500149.770	58°38.318'	3°52.771'	58°38'19.092"	3°52'46.277"
2023_P_A_CPT_317	CPT_O	448437.626	6503906.745	58°40.339'	3°53.344'	58°40'20.333"	3°53'20.635"
2023_P_A_CPT_318	CPT_O	449945.582	6503980.598	58°40.389'	3°51.785'	58°40'23.357"	3°51'47.103"
2023_P_E_BH_01	BH	455011.800	6493438.600	58°34.742'	3°46.419'	58°34'44.543"	3°46'25.111"

VESSEL – Dina Polaris



Name: Dina Polaris
Flag: Portugal
Call Sign: CQOF
MMSI: 255801950
IMO: 9765031
Ship Owner: Dina Polaris AS (Fonnes 50; 5953; Fonnes, Norway)
Port of Registry: Madeira
Contact: External Watch VHF Channel 16
Internal Communication UHF05
E-mail: bridge@dinapolaris.mmred.no
captain@dinapolaris.mmred.no
Bridge VSAT: +47 51229010
GSM: +47 47970226
Bridge Iridium: +881677744768

The Geoquip Marine Operations AG site manager on Dina Polaris can be contacted on opm.dinapolaris@geoquip-marine.com or via the Bridge phone.

The vessel has the following dimensions:

Length: 98.90 m
Max Draught: 7.082 m

Deadweight: 6203.9 t

The vessel Dina Polaris is a DP II (Dynamically Positioned) vessel and for most of the period of works will have restricted ability to manoeuvre. We request that all vessels within the vicinity of the Vessel Name always remain at least 500 m clear and pass at a reduced speed. The vessel Dina Polaris has AIS installed.

Port of Operation

The Dina Polaris is planned to mobilise in the port of Scrabster, Scotland on 01 May 2023. Following completion of Project Operations, the vessel will transit to Scrabster, Scotland for demobilisation activities.

General Safety Information

All vessels engaged in the survey activity will exhibit appropriate lights and shapes prescribed by the International Regulations for Preventing Collisions at Sea; relative to their operations. All vessels engaged in the activity will also transmit an Automatic Identification System (AIS) message.

All vessels are requested to give the survey vessel Dina Polaris at least 500 m safety clearance aft.

Mariners are reminded to navigate with caution and keep continued watch on VHF Channel 16 when navigating the area.

Distribution List

A central list of recipients is maintained by the project; if you are not the appropriate recipient of these notices, or do not wish to receive the notices in the future, please contact us at the address provided.