

Notice to Mariners

Vessels and General Safety Advice

Scottish Hydro Electric Power Distribution (SHEPD) ED1 Subsea Cable Installations

Date of Issue: 22nd December 2022

Please be advised that Briggs Marine Contractors (on behalf of SHEPD) shall be undertaking the following subsea cable installations:

- Mainland Orkney to Hoy North
- Mainland Orkney to Hoy Centre

Both cables are to be installed in close proximity to each other within the corridor shown in Figure 1. The table overleaf lists the associated WGS84 coordinates for the working corridor.

Vessel Operations

The work utilises cable ship **Elektron** for the cable installations.

DSV **Forth Warrior** will be conducting diving operations within the cable corridor.

Elektron will be assisted at the shore ends by **Celtic Guardian**, **Celtic Mara**, **Celtic Nomad** and **Celtic Trader**, regularly passing inside the working corridor for crew transfers and supporting nearshore cable landing operations.

Support vessel, **Athenia** will be carrying out pre-lay and post lay surveys of the cable route.

Operations are expected to commence on the **25th January for a period of approximately 4 weeks**.

LEGAL NOTICE

Please be advised that this Notice to Mariners should be treated as official notice of the nature, duration and location of the works which are scheduled to take place. During the period of this notice, we request that you plan your activities around our short-term, temporary activities.

Any failure to remove equipment or entry into the identified location in a manner that would constitute a hazard may be a breach of your duties of safe seamanship as described in the Convention on International Regulations for Preventing Collisions at Sea 1972 and/or the Merchant Shipping Act 1995, and may result in removal of the relevant equipment. Failure to remove equipment or entry into the identified location in a manner that would constitute a hazard may constitute a breach of duty of care at common law, and a failure to protect submarine cables for successful seabed user co-existence under Scotland's National Marine Plan.

SHEPD shall found on this notice in the event of any damage, loss or disruption arising from failure to heed the information herein.

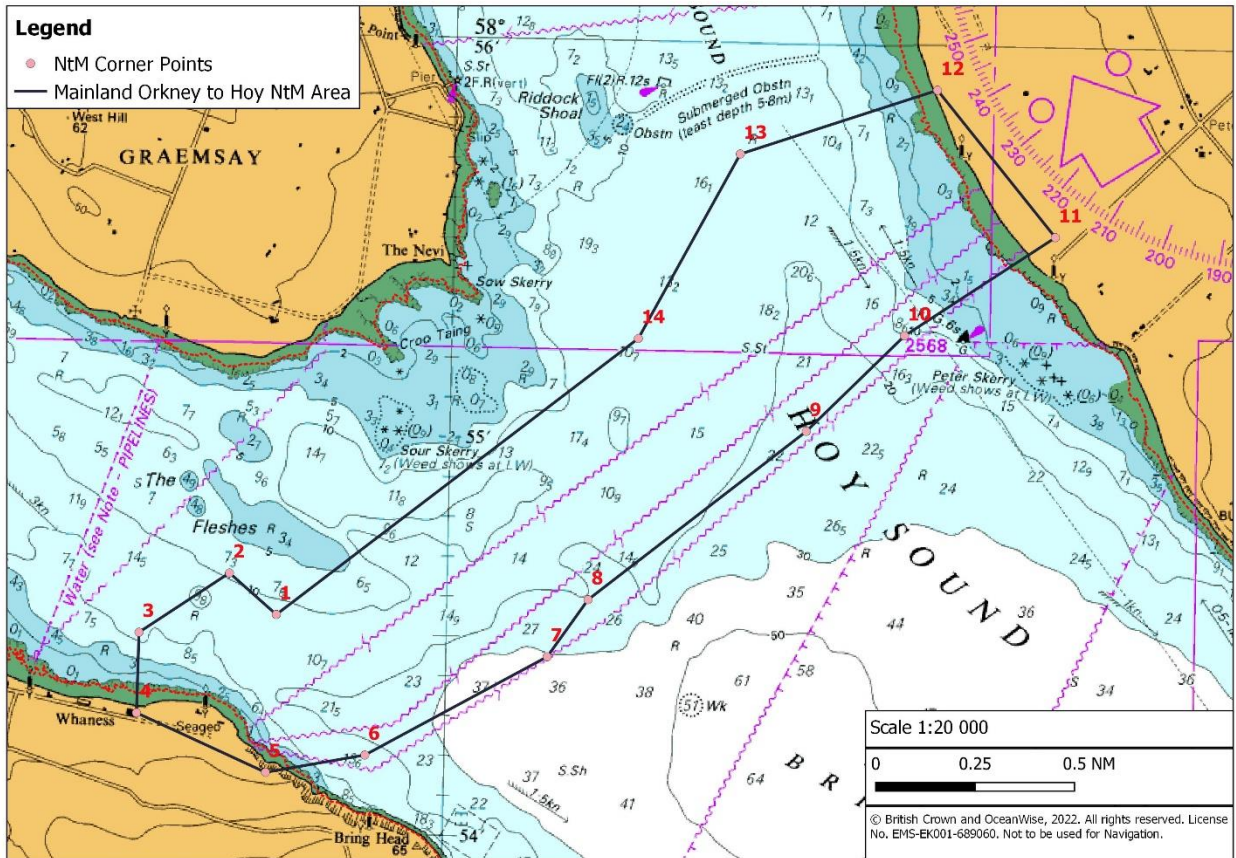









Figure 1- Mainland Orkney – Hoy Notice to Mariners Works Corridor

Mainland Orkney – Hoy Notice to Mariners Works Area		
Pos No.	Latitude (WGS84)	Longitude (WGS84)
1	58° 54.546'N	3° 16.826'W
2	58° 54.648'N	3° 17.057'W
3	58° 54.495'N	3° 17.490'W
4	58° 54.293'N	3° 17.495'W
5	58° 54.150'N	3° 16.864'W
6	58° 54.198'N	3° 16.384'W
7	58° 54.453'N	3° 15.509'W
8	58° 54.598'N	3° 15.316'W
9	58° 55.030'N	3° 14.273'W
10	58° 55.274'N	3° 13.805'W
11	58° 55.527'N	3° 13.082'W
12	58° 55.891'N	3° 13.667'W
13	58° 55.722'N	3° 14.618'W
14	58° 55.255'N	3° 15.096'W

Vessel Photo	Vessel Description
 <p>© David Meek MarineTraffic.com</p>	<p>Cable Lay Elektron - 87m length - 18m beam - 4m draft</p>
	<p>Dive Vessel Forth Warrior - 27.3m length - 11.5m beam - 3.06m draft</p>
	<p>Support Celtic Guardian - 14m length - 4.3m beam - 0.7m draft</p>
	<p>Support Celtic Trader - 10.3m length - 3.3m beam - 0.5m draft</p>

	<p>Support Celtic Mara - 11m length - 3.4m beam - 0.5m draft</p>
 <p><small>© myklinecstkaol.com MarineTraffic.com</small></p>	<p>Support Celtic Nomad -11m length -3.4m beam -0.5m draft</p>
	<p>ROV & Support Athenia - 20m LOA - 4m beam - 1m draft</p>

*****Please note: Vessels mentioned may be substituted with an equivalent*****

Work Description

During operations the vessels Elektron, Forth Warrior and Athenia will be restricted in ability to manoeuvre. Whilst operations will seek to minimise disruption on the width of the main navigation channel, some disruption may be unavoidable during operations within the working corridor.

Cable laying operations may be conducted on a 24-hour basis. ROV and Dive operations will be 12-hour basis.

Should any vessel wish to come within 500m of the vessels, then direct communication with the Master / Operator is required.

The vessels will display the appropriate lights / day shapes for their operations.

Primary Equipment for Cable Installation and Diving Operations

Activity	Equipment	Approximate distance from vessel	Vessel
Cable Installation	Subsea power cable in water column. Cable mounted ROV.	Up to 500m	Elektron
Cable Installation Assistance	ROV	Up to 250m	Athenia
Cable Installation Assistance	Dive Spread	Up to 250m	Forth Warrior

Contact Details

The vessel contact details are given in the tables below:

Cable Vessel: Elektron	
MMSI	258538000
Call sign	LADO
Offshore Manager	Matthew Hart
Email	mhart@briggsmarine.com
Tel	07807011564
DSV: Forth Warrior	
MMSI	235116011
Call sign:	2JHR8
Offshore Manager	Matthew Hart
Email	mhart@briggsmarine.com
Tel	07807011564
CTV: Celtic Guardian	
MMSI	235114006
Call sign:	2IZH5
Offshore Manager	Matthew Hart
Email	mhart@briggsmarine.com
Tel	07807011564
Landing Craft: Celtic Trader	
MMSI	235112043
Call sign:	2IQW5
Project Manager	Suzanne Grimes
Email	sgrimes@briggsmarine.com

Tel	07391 391 564
Rib: Celtic Mara	
MMSI	235098447
Call sign:	2GLP3
Offshore Manager	Matthew Hart
Email	mhart@briggsmarine.com
Tel	07807011564
Rib: Celtic Nomad	
MMSI	235095248
Call sign:	2FYF4
Offshore Manager	Matthew Hart
Email	mhart@briggsmarine.com
Tel	07807011564
Survey: Athenia	
MMSI	235088194
Call sign:	2EUE2
Offshore Manager	Matthew Hart
Email	mhart@briggsmarine.com
Tel	07807011564

Fisheries Liaison Officers

Fishing liaison for the cable route surveys will be co-ordinated by Brown and May Marine (BMM). For any commercial fishery queries please contact the Company Fishing Liaison Officers (CFLOs) Alex Winrow-Giffin on 07760 160039, alex@brownmay.com or Meg Kalafat on 07702 710176, meg.kalafat@brownmay.com.

The local Fishing Industries Representative (FIR) Chris Davidson (07810 305100), cad17@hotmail.co.uk will also be in place to liaise with the vessels and fishing operations in the area

SHEPD has taken all appropriate steps reasonably and fairly to minimise the inconvenience to other marine users to enable SHEPD to carry out the Vessel Operations described, in order to promote and forward its essential infrastructure works, pursuant to the licences and permissions it has obtained, and for the benefit of Orkney service users and others.

Further Details

Further enquiries should be addressed to the following people:

Name	Contact Number	Email
Mel Chisholm - SSEN Project Manager	07825 015006	Mel.chisholm@sse.com

Distribution List

Any stakeholders identified within the relevant Fishing Liaison Management Action Plan (FLMAP), will be included on the distribution list for this NtM.