

Shetland HVDC Link Shetland to Caithness Notice to Mariners

NtM Number	Shetland HVDC Link/031
Date of Issue	11.01.2023

1 Planned Activity

NKT, on behalf of Scottish Hydro Electric Transmission Plc, are due to commence a pre-lay grapnel run (PLGR) along the Shetland HDVC link cable route from KP160 to KP0 Weisdale Voe, Shetland. The operation will be performed by JD-Contractors with the vessel *Sima*.

The Shetland HVDC link is a critical electricity transmission link and will form part of the electrical transmission grid that is essential to the transport of renewable energy between the locations where it is generated and areas of demand, and the delivery of both Scotland's and the United Kingdom's 2030 climate change targets.

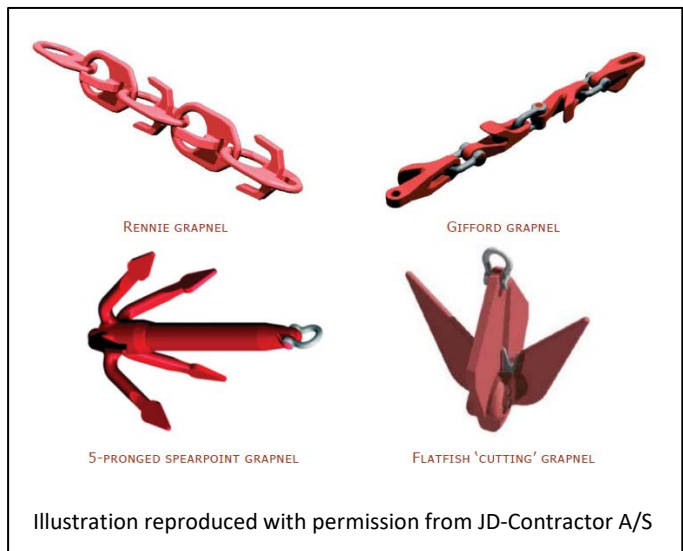
The PLGR will be completed using a grapnel towed from the vessel. The grapnel will be deployed to retrieve any potential debris that could pose a hazard to cable installation.

Penetration for the grapnel rigs, shown in the illustration opposite, shall range from 0.5 to 1.8m into the seabed.

The following table of co-ordinates and chart describe the working area.

Please be aware that vessel, *Sima*, will be restricted in her ability to manoeuvre as defined under COLREGs (International Regulations for Preventing Collisions at Sea 1972). Masters of vessels are therefore requested to maintain their vessels at a minimum safe passing distance of 500 metres.

Sima will display the appropriate shapes and lights in accordance with COLREGs Rules 16 and 18.



2 Outline Programme of Works (approximate)

PLGR Works	Earliest Start Date: 09/02/2023	Estimated Completion Date: 09/03/2023
------------	---------------------------------	---------------------------------------

These dates are subject to weather and operational uncertainties that could extend the overall duration to 23/03/2023, with the potential for further extension to the work duration.

3 Chart of Activity Area

Please find chart on the last page of the document.

4 Safe Clearances, Navigation Safety Features and Safety Notes for Mariners

Vessels are requested to maintain a safe distance (500m) from *Sima*.

All vessels are required to comply with the COLREGS, especially rules 16 and 18 as *Sima* will be restricted in her ability to manoeuvre.

5 Vessel Details

Vessel Name:	<i>Sima</i>
Vessel Type / LOA(m):	DP2 Offshore Installation Vessel / 81.37 m
IMO Number:	8418564
VHF Call Sign:	OUXR2
MMSI:	219017151
Vessel Bridge Mobile:	+45 3068 5497
Vessel Sat Phone:	+45 8213 6645
Onshore Contact:	sima@jdcon.dk



6 Project Contact Details

Scottish Hydro Electric Transmission Subsea Cable Installation Manager:

Name: Lorraine Wallington
 Email: Lorraine.wallington@sse.com
 Telephone: +44 7443 173906

Scottish Hydro Electric Transmission Lead Project Manager:

Name: Fionan Doonan
 Email: fionan.doonan@sse.com
 Telephone: +44 7385 368908

Fisheries Liaison Officer (FLO):

Name: Willie Watt
 Email: willie.w@brownmay.com
 Telephone: +44 7897 691860

7 Geographic co-ordinates of activity area

All positions quoted in WGS84 UTM Zone 30N and in degrees and decimal minutes

Please note: The coordinates presented below represent a simplified centreline, the works will be completed +/-100m either side of this centreline. As illustrated in the chart

Area	WGS84 UTM Zone 30N		Degrees Decimal Minutes		
	Easting	Northing	Latitude	Longitude	
Location: Area 1 (KP160 – KP100)	551683	6534457	58° 56.798 N	002°	6.107 W
	552875	6537274	58° 58.307 N	002°	4.824 W
	556940	6542429	59° 1.053 N	002°	0.503 W
	561992	6548616	59° 4.344 N	001°	55.121 W
	562052	6550516	59° 5.367 N	001°	55.026 W
	561938	6553037	59° 6.726 N	001°	55.103 W
	563876	6557985	59° 9.375 N	001°	52.986 W
	563995	6560023	59° 10.472 N	001°	52.825 W
	562860	6569855	59° 15.779 N	001°	53.845 W
	562261	6575133	59° 18.627 N	001°	54.385 W
	563462	6579373	59° 20.901 N	001°	53.044 W
	563477	6585075	59° 23.972 N	001°	52.927 W
	562386	6589161	59° 26.183 N	001°	54.009 W
	562231	6589890	59° 26.577 N	001°	54.160 W
	562231	6589890	59° 26.577 N	001°	54.160 W
	562089	6590667	59° 26.997 N	001°	54.297 W
	562919	6599062	59° 31.512 N	001°	53.270 W
	Location: Area 2 (KP100 – KP50)	565246	6608784	59° 36.728 N	001°
568401		6618236	59° 41.789 N	001°	47.085 W
571256		6627795	59° 46.909 N	001°	43.848 W
571836		6632825	59° 49.612 N	001°	43.124 W
573412		6637488	59° 52.107 N	001°	41.339 W
573617		6638170	59° 52.473 N	001°	41.105 W
Location: Area 3 (KP50 – KP25)	573617	6638170	59° 52.473 N	001°	41.105 W
	574356	6640196	59° 53.556 N	001°	40.270 W
	574721	6640824	59° 53.890 N	001°	39.865 W
	575212	6642730	59° 54.911 N	001°	39.297 W
	576590	6646943	59° 57.165 N	001°	37.726 W
	579515	6655499	60° 1.740 N	001°	34.386 W
	579716	6656420	60° 2.234 N	001°	34.149 W

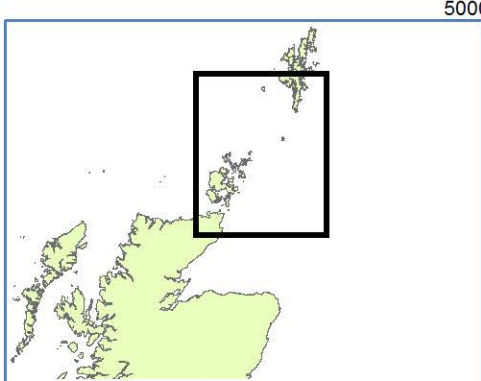
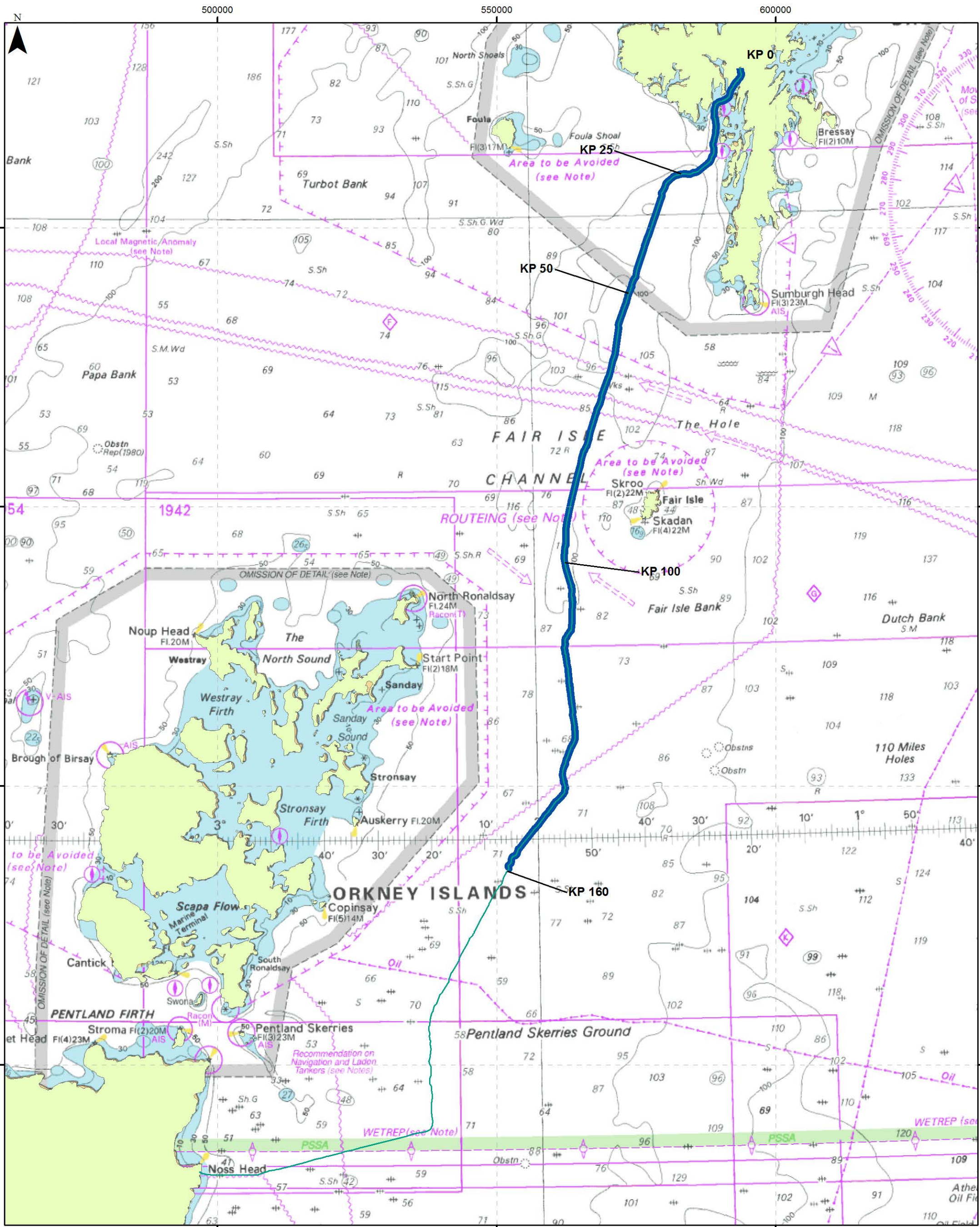
Location: Area 4 (KP25 – KP0)	580335	6657849	60°	2.996	N	001°	33.449	W
	580842	6658430	60°	3.303	N	001°	32.889	W
	581736	6659193	60°	3.704	N	001°	31.908	W
	582997	6659589	60°	3.902	N	001°	30.540	W
	583772	6659620	60°	3.909	N	001°	29.704	W
	583772	6659620	60°	3.909	N	001°	29.704	W
	584700	6659601	60°	3.887	N	001°	28.704	W
	586245	6660207	60°	4.194	N	001°	27.024	W
	587600	6661352	60°	4.794	N	001°	25.535	W
	588237	6661909	60°	5.085	N	001°	24.834	W
	588824	6663094	60°	5.716	N	001°	24.170	W
	588923	6663782	60°	6.085	N	001°	24.046	W
	588776	6665188	60°	6.844	N	001°	24.167	W
	589307	6668136	60°	8.425	N	001°	23.517	W
	588971	6670760	60°	9.842	N	001°	23.811	W
	589202	6672042	60°	10.530	N	001°	23.528	W
	589518	6672323	60°	10.677	N	001°	23.179	W
	590216	6672661	60°	10.850	N	001°	22.415	W
	591085	6672994	60°	11.018	N	001°	21.467	W
	591529	6673353	60°	11.205	N	001°	20.977	W
	591811	6674062	60°	11.583	N	001°	20.653	W
	591876	6674483	60°	11.809	N	001°	20.571	W
	592744	6675924	60°	12.573	N	001°	19.593	W
	593048	6676193	60°	12.714	N	001°	19.256	W
	593355	6676614	60°	12.936	N	001°	18.912	W
	593768	6677225	60°	13.259	N	001°	18.448	W
	593819	6677583	60°	13.452	N	001°	18.383	W
	593587	6678537	60°	13.968	N	001°	18.608	W

Legal Notice

Please be advised that this Notice to Mariners should be treated as official notice of the nature, duration and location of the works which are scheduled to take place. During the period of notice, failure to remove equipment or entry into the identified location may have serious consequences and may be considered a breach of the Convention on International Regulations for Preventing Collisions at Sea 1972 and/or the Merchant Shipping Act 1995 (a breach of which can carry criminal sanctions). Additionally, Scottish Hydro Electric Transmission may consider taking legal action to remove any obstruction and/or seek damages for any delay, in addition to any legal costs in doing so.

Scottish Hydro Electric Transmission will commence works on the **9th February 2023**. Please be advised that any equipment remaining within the notified location, after the **5th February 2023**, will be regarded as having the potential to obstruct or delay the works and **will be removed without further notice to you and may be discarded**. In these circumstances, no compensation will be payable to you for any losses (including loss of equipment and/or loss of profit).

For the avoidance of any doubt, no compensation will be paid in relation to any new equipment placed within the identified location following the issuance of this Notice to Mariners.



- Legend**
- Shetland HVDC Link
 - Pre-lay Grapnel Run works

Projection: WGS 1984 UTM Zone 30N		Title: Pre-lay Grapnel Run works KP0 - KP160	
Scale: 0 10 20 km		Client: NKT	
Date: January 2023		Issue: v0.1	
Issue: v0.1		Drawn by: NB	

MarineSpace
an ERM Group Company