

Notice to Mariners

Mainland Orkney to Hoy North and Centre Subsea Cable Installation

Scottish Hydro Electric Power Distribution (SHEPD)
Mainland Orkney to Hoy North & Centre

Revision 1 – 26th April 2022

Mainland Orkney to Hoy North and Centre Cable Replacements: The projects are experiencing significant delays relating to offshore cable installation and no offshore operations will be taking place until further notice. The previous Notice to Mariners, dated 01st April 2022 (overleaf), is now cancelled.

Date of Issue: 1st April 2022

Overview

Please be advised that Global Offshore (on behalf of SHEPD) are conducting the installation of the replacement Mainland Orkney-Hoy North and Centre submarine electricity cables. The purpose of this notice is to outline the working area and operations for the vessels along the cable lay route.

There will be three different vessels associated with the subsea cable installation process.

In summary:

1. Cable Lay Vessel: Global Symphony (entire route)
2. Post-Lay Inspection of Cable: Global Symphony (entire route)
3. Post-Lay Stabilisation Works: C-Force (alternative vessels may be either C-Fenna or C-Odyssey)
4. Post-Lay Nearshore Survey of Cable: Delta 9151 (or equivalent vessel depending on availability)

An overview of the cable route and working corridor is shown below in Figure 1

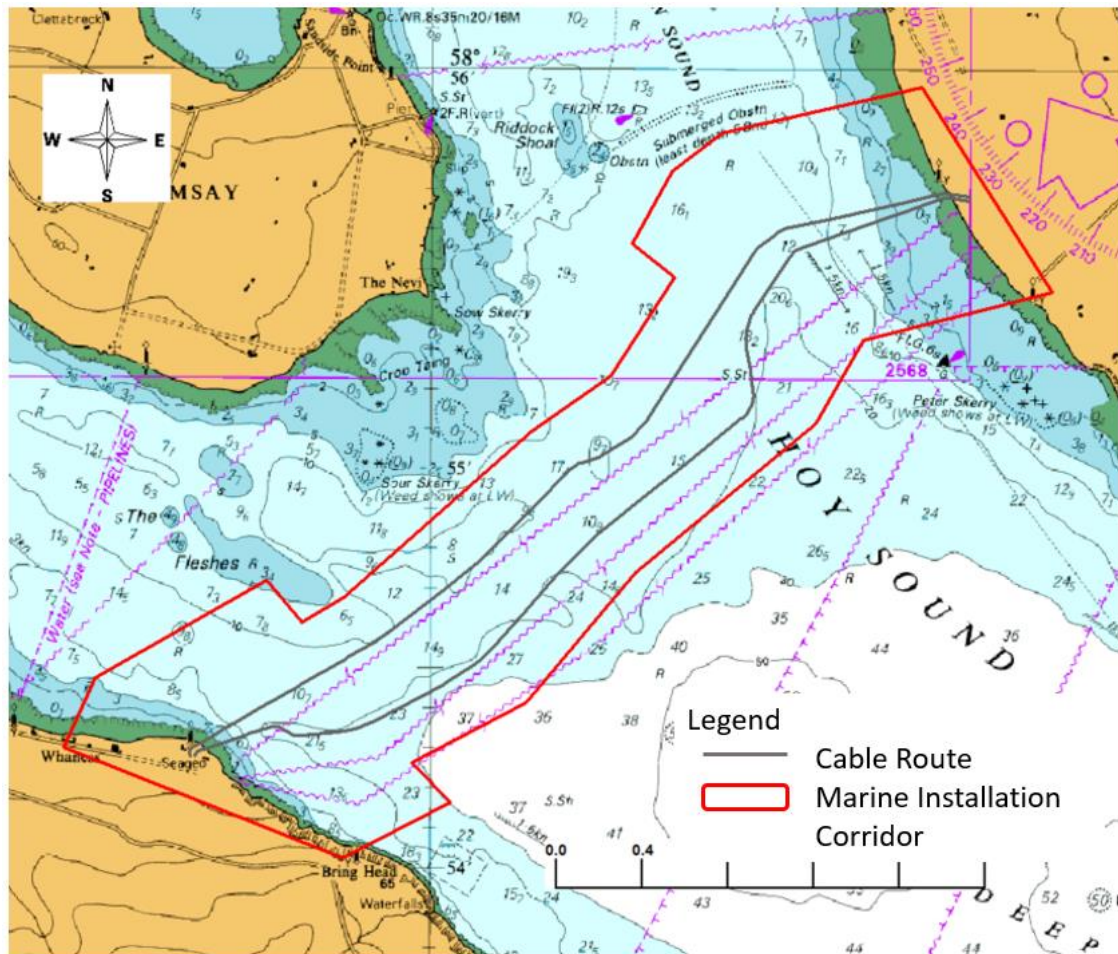


Figure 1: Cable Route Overview for Mainland Orkney to Hoy North & Centre

The corner points of the corridor are listed in Table 1:

Pos No.	Latitude			Longitude		
	Degrees	Minutes		Degrees	Minutes	
1	58	54.62068	N	-3	-16.60597	W
2	58	54.72394	N	-3	-16.77946	W
3	58	54.47818	N	-3	-17.60362	W
4	58	54.30421	N	-3	-17.7542	W

5	58	54.03047	N	-3	-16.40448	W
6	58	54.16893	N	-3	-15.88777	W
7	58	54.27048	N	-3	-16.07079	W
8	58	54.42023	N	-3	-15.52137	W
9	58	54.74623	N	-3	-14.9938	W
10	58	55.1201	N	-3	-14.12606	W
11	58	55.3282	N	-3	-13.89683	W
12	58	55.45035	N	-3	-12.98462	W
13	58	55.96128	N	-3	-13.61548	W
14	58	55.8463	N	-3	-14.58227	W
15	58	55.7509	N	-3	-14.82297	W
16	58	55.5684	N	-3	-15.01701	W
17	58	55.48514	N	-3	-14.81081	W
18	58	55.2374	N	-3	-15.11603	W
19	58	55.09855	N	-3	-15.49998	W
20	58	54.68165	N	-3	-16.40279	W
21	58	54.619	N	-3	-16.61058	W

Table 1: Corridor Corner Points Coordinates (WGS 84)

Vessels carrying out the subsea cable works will be restricted in their ability to manoeuvre and will display the appropriate lights and shapes. Other vessels are requested to pass at a safe speed and provide a minimum clearance of 500m from the construction vessels during marine operations (COLREGs Rule 16 & 18). Vessels associated with the works will monitor VHF Channel 16 at all times. Mobile contacts for the vessels are listed at the end of this NtM.

The vessels will be working 24 hours per day during these operations.

Schedule of Operations

The planned operations are shown below in Table 2.

Dates	Operation	Vessel
05/05/2022 to 24/05/2022	Mainland Orkney to Hoy North and Centre Cable Lay and Survey Operations	Global Symphony
24/05/2022 – 30/05/2022	Mainland Orkney to Hoy North and Centre Cable Post lay Stabilisation Works	C-Force (or alternative vessels as above)
18/06/2022 – 20/06/2022	Mainland Orkney to Hoy North Cable Post-Lay Nearshore Survey	Delta 9151 (or alternative vessels as above)
05/08/2022 – 07/08/2022	Mainland Orkney to Hoy Centre Cable Post-Lay Nearshore Survey	Delta 9151 (or alternative vessels as above)

Table 2: Schedule of Operations

Cable Lay & PLIB Vessel Details

The vessel that will be carrying out the crossing construction works, the cable installation works and also the cable post lay inspection operations is the Global Symphony.



Figure 2: Global Symphony (CLV & Survey vessel)

Post Lay Stabilization Works Vessel Details

The vessel that will be carrying out the post lay stabilization works on both North and Centre cable is the C-Force (or one of the above listed alternative vessels).



Figure 3: C-Force (Construction Vessel)

Post Lay Nearshore Survey Vessel Details

The vessel that will carry out the nearshore survey activity on the North and Centre cables is shown below.



Figure 4: Delta 9151 RHIB

Note: an alternative equivalent vessel may be used to carry out the nearshore survey depending on availability.

Description of Installation Operations

CLV Global Symphony will be installing concrete mattresses on crossing points and then lay the Mainland Orkney to Hoy North & Centre cables.

The offshore post lay survey operations will be carried out by the Global Symphony immediately after completion of each cable lay operations.

The construction vessel will be installing concrete mattresses and rock filter bags on both North and Centre cables at pre-determined locations as part of the post lay stabilization works.

The nearshore sections of the marine cables will be surveyed using the Delta 9151(or equivalent vessel).

All above-described operations will involve ROV equipment deployed to seabed.

The duration of the operations is shown in Table 1.

Contact Details

Contact details for each vessel are provided below:

CLV & Survey Vessel: Global Symphony	
Call sign	MGJH7
Bridge	+47 236 71809
Offshore Manager / Party Chief	Joe Eaglesham
Email	oisin.murray@globaloffshore.co.uk
Onshore Marine Manager	nicholas.hillcoat@globalmarine.group
Onshore Project Manager	john.murray@globalmarine.group

Table 3: CLV Contact Details

Post Lay Construction Vessel: C-Force	
Call sign	MITT4
Bridge	07544 164793
Offshore Manager / Party Chief	Craig Laughton – 07733454347
Email	C-Force@leaskmarine.com
Onshore Marine Manager	Oliver Bethwaite - 07966228830
Onshore Project Manager	Andy Shanks – 07949 410771 andy@leaskmarine.com

Table 4: Post Lay Construction Vessel Contact Details (Option 1)

Post Lay Construction Vessel: C-Fenna	
Call sign	MBAH3
Bridge	07718 424490
Offshore Manager / Party Chief	Craig Laughton – 07733454347
Email	C-Fenna@leaskmarine.com
Onshore Marine Manager	Oliver Bethwaite - 07966228830
Onshore Project Manager	Andy Shanks – 07949 410771 andy@leaskmarine.com

Table 5: Post Lay Construction Vessel Contact Details (Option 2)

Post Lay Construction Vessel: C-Odyssey	
Call sign	2ETW7
Bridge	07718 424491
Offshore Manager / Party Chief	Craig Laughton – 07733454347
Email	C-Odyssey@leaskmarine.com
Onshore Marine Manager	Oliver Bethwaite - 07966228830
Onshore Project Manager	Andy Shanks – 07949 410771 andy@leaskmarine.com

Table 6: Post Lay Construction Vessel Contact Details (Option 3)

Delta 9151 RHIB	
Call sign	MCVE3
Manager	Brad Tate
Email	brad@23degreesrenewables.co.uk +44 7802 868013

Table 7: Nearshore Survey Vessel Contact Details

Fishing Liaison Officers (FLOs)

Fishing liaison for the cable lay operations will be co-ordinated by Brown and May Marine (BMM). For any commercial fishery queries please contact the Company Fishing Liaison Officers (CFLOs) Alex Winrow-Giffin on 07760 160039, alex@brownmay.com or Meg Kalafat on 07702 710176, meg.kalafat@brownmay.com

The local Fishing Industries Representative (FIR) Chris Davidson (07810 305100), cad17@hotmail.co.uk will also be in place to liaise with the vessels and fishing operations in the area

Legal Notice:

Please be advised that this Notice to Mariners should be treated as official notice of the nature, duration and location of the works which are scheduled to take place. During the period of this notice, we request that you plan your activities around our short-term, temporary activities. Any failure to remove equipment or entry into the identified location in a manner that would constitute a hazard would be a breach of your duties of safe seamanship as described in the Convention on International Regulations for Preventing Collisions at Sea 1972 and/or the Merchant Shipping Act 1995.