

Notice to Mariners

Vessels and General Safety Advice

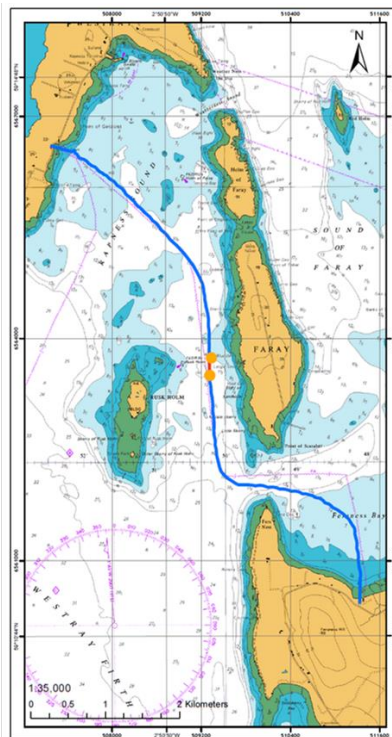
Scottish Hydro Electric Power Distribution (SHEPD)
Westray-Eday Cable Inspections 2020 Submarine Electricity Geophysical Survey Works

Date of Issue: 8th September 2020

Please note this is an update to the previous NtM which was issued on 1st September 2020.

Please be advised that Briggs Marine Contractors (on behalf of SHEPD) will be undertaking a geophysical survey to a subsea electricity cable within a 500m wide corridor. Please refer to Figure 1, showing the cable route inspection area and also the table overleaf that lists the coordinates of the cable route survey corridor.'

The work will utilise an Unmanned Surface Vehicle (USV) XO-08 and the support vessel 'Causeway Explorer' for the operations.





(Figure 1, locations of existing cable to be inspected, land end boundaries listed in the table overleaf).

The survey corridor will be concentrated along the cable route as shown in figure 1, allowing +/- 250m along the centre of the cable route.

USV XO-08 survey dates are expected to commence on the 9th September 2020, and are expected to continue over a planned period of 14 days, weather permitting.

| Cable | Lat (DMS) | Long (DMS) | Lat (DM) | Long (DM) |
|----------------|------------------|-----------------|---------------|--------------|
| Eday - Westray | 59° 14' 32.18" N | 2° 52' 5.24" W | 59° 14.536' N | 2° 52.087' W |
| | 59° 13' 35.13" N | 2° 50' 0.79" W | 59° 13.586' N | 2° 50.013' W |
| | 59° 12' 6.06" N | 2° 49' 35.96" W | 59° 12.101' N | 2° 49.599' W |
| | 59° 11' 46.45" N | 2° 47' 52.97" W | 59° 11.774' N | 2° 47.883' W |
| | 59° 11' 5.66" N | 2° 47' 34.34" W | 59° 11.094' N | 2° 47.572' W |
| | 59° 11' 0.55" N | 2° 48' 11.36" W | 59° 11.009' N | 2° 48.189' W |
| | 59° 11' 40.68" N | 2° 49' 24.36" W | 59° 11.678' N | 2° 49.406' W |
| | 59° 11' 34.19" N | 2° 49' 54.43" W | 59° 11.570' N | 2° 49.907' W |
| | 59° 11' 46.80" N | 2° 50' 29.40" W | 59° 11.780' N | 2° 50.490' W |
| | 59° 13' 13.39" N | 2° 50' 49.46" W | 59° 13.223' N | 2° 50.824' W |
| | 59° 14' 3.76" N | 2° 52' 32.23" W | 59° 14.063' N | 2° 52.537' W |
| | 59° 14' 32.18" N | 2° 52' 5.24" W | 59° 14.536' N | 2° 52.087' W |

| Vessel Photo | Vessel Description |
|---|--|
|  | Unmanned survey vessel XO-08 Dimensions: - 4.5m length - 2.2m beam - 0.7m draft |
|  | Support Vessel Causeway Explorer - 12m length - 4m beam - 1.5m draft |

Please note: Vessels mentioned may be substituted with an equivalent

Work Description

The USV XO-08 will operate in waters along the existing cable route (as shown in figure 1), assisted by the support vessel.

During operations both vessels will be restricted in their ability to manoeuvre. The USV XO-08 will be operating hull mounted SBP, SSS and MBES equipment.

Survey operations may be conducted over a 24hr period.

Should any vessel wish to come within 500m of the vessels, then direct communication with the Master / Operator is required.

The vessels will display the appropriate lights / shapes for their operations.

Primary Survey Equipment

| Primary equipment | Towed / Hull mounted / Sampling | Approximate tow length (if applicable) | Vessel |
|--|---------------------------------|--|-----------|
| Sub Bottom Profiler (SBP) / Multibeam echosounder (MBES) / Side Scan Sonar (SSS) | Hull mounted | N/A | USV XO-08 |

Contact Details

The vessel contact details are given in the tables below:

| Support vessel: Causeway Explorer | |
|-----------------------------------|--|
| MMSI | 235093726 |
| Call sign | 2FRZ3 |
| Offshore Manager / Party Chief | Suzanne Grimes |
| Email | sgrimes@briggsmarine.com |
| Tel | 07391 391564 |
| Unmanned Survey vessel: XO-08 | |
| MMSI | 232027631 |
| Call sign: | MHIJ7 |
| Offshore Manager | Tom Davenport |
| Email | operations@xocean.com |
| Tel | 07759 237 524 |

Fisheries Liaison Officers

Fishing liaison for the cable route surveys will be co-ordinated by Brown and May Marine (BMM). For any commercial fishery queries please contact the Company Fishing Liaison Officers (CFLOs) Alex Winrow-Giffin on 07760 160039, alex@brownmay.com or Meg Kalafat on 07702 710176, meg.kalafat@brownmay.com. The local Fishing Industries Representative (FIR) Chris Davidson (07810 305100), cad17@hotmail.co.uk will also be in place to liaise with the vessels and fishing operations in the area.

Further Details

Further enquiries should be addressed to the following people:

| Name | Contact Number | Email |
|---|----------------|--|
| Kevin Wilson – SSEN Assistant Project Manager | 07469 411335 | kevin.1.wilson@sse.com |

Distribution List

Any stakeholders identified within the relevant Fishing Liaison Management Action Plan (FLMAP), will be included on the distribution list for this NtM.