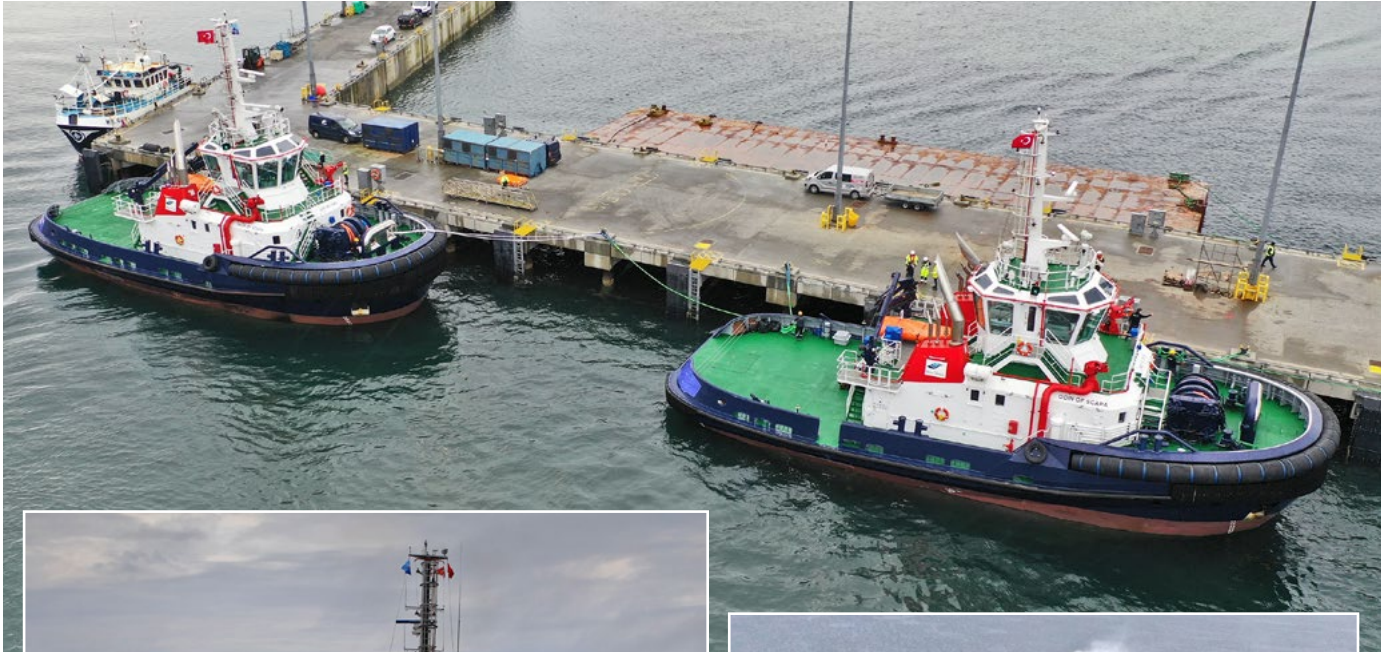


# ODIN OF SCAPA FRYA OF SCAPA THOR OF SCAPA



## Specifications

Length O.A.	32.0 m
Breadth MLD	13.0 m
Nav Draught	5.5 m
Trial Speed	14.0 knots
B.P. Ahead	78.56 Tonnes
B.P. Astern	76.16 Tonnes
Fuel Capacity	166 m3
F.W. Capacity	20 m3
Foam Capacity	9 m3

## Main Engines

2x Caterpillar 3516C 4700kW total power  
 Propulsion – 2x Kongsberg Azimuth thrusters US 255S CP  
 Generators – 3x Caterpillar C4.4 99ekW

## Deck Machinery

1x DMT Escort towing winch ETW-H-1000KN  
 1x DMT towing winch TW-H-300KN  
 2x Capstans forward  
 1x Capstan Aft

## Fire Pumps

2x FFS FiFi 1 notation  
 Fluorine free alcohol resistant foam

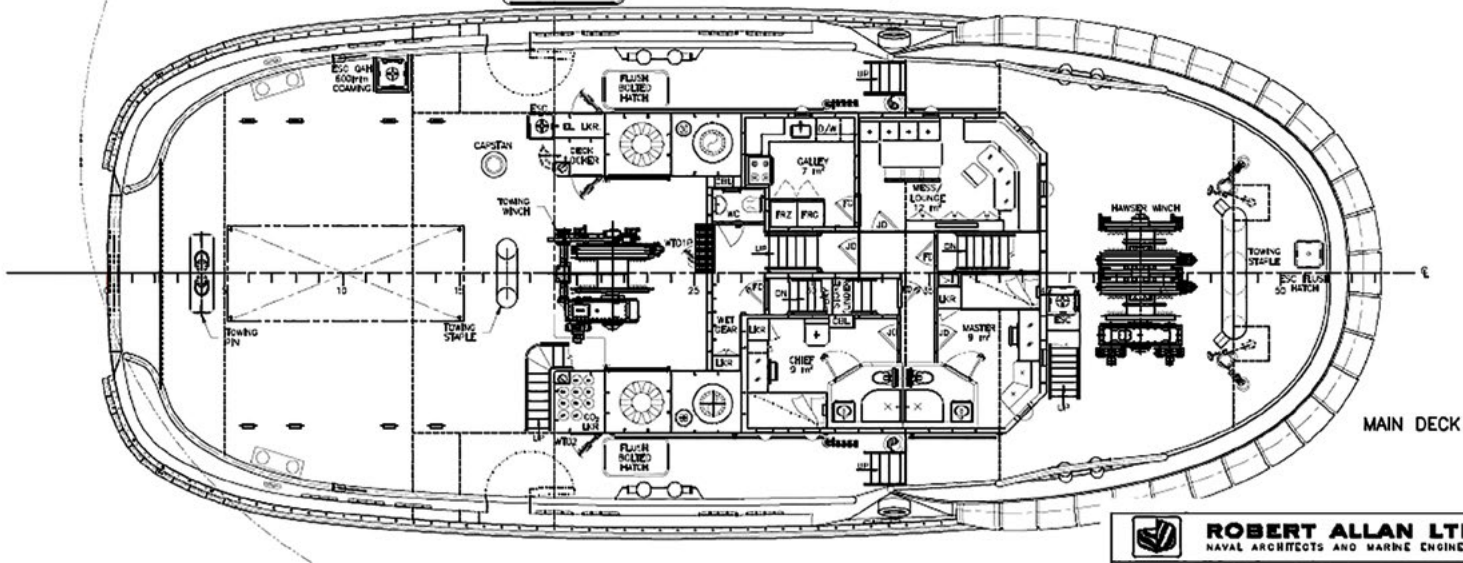
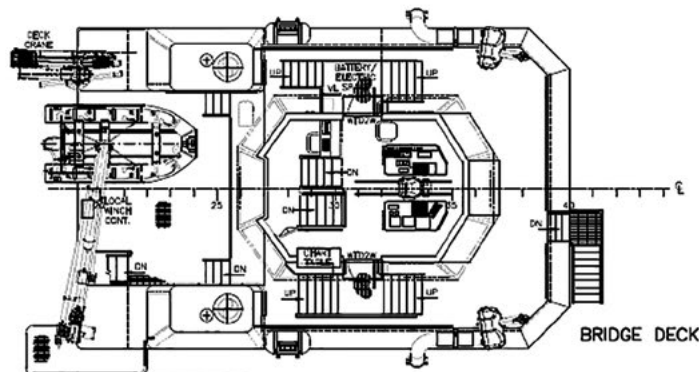
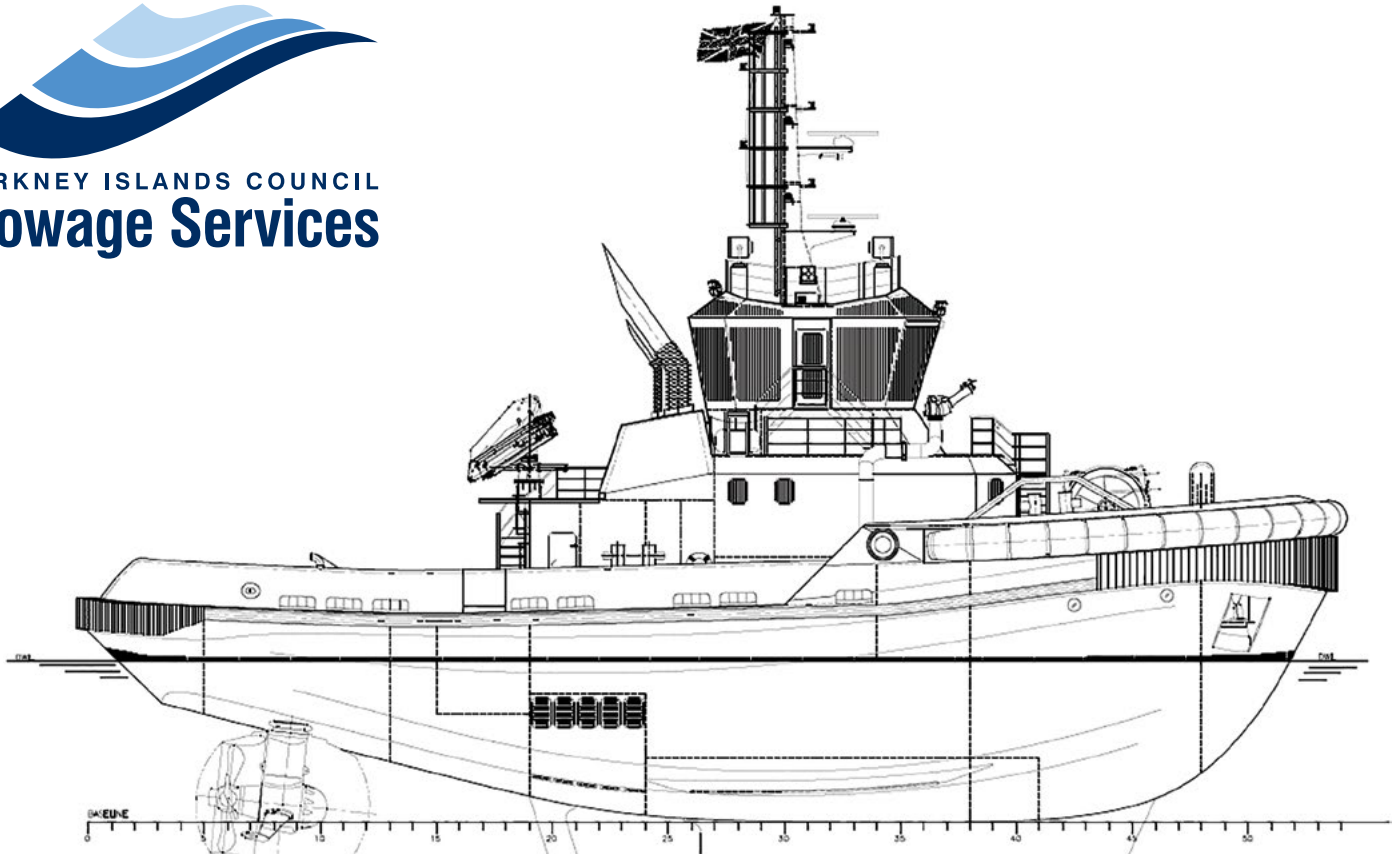
## Class

Rina, C Escort tug; fire-fighting ship - 1 - water-spraying;  
 Unrestricted navigation\*AUT-UMS, INWATERSURVEY, MLC DESIGN

**ODIN AND THOR**  
 are available 24/7 365 days a year.  
 See overleaf for booking details.



ORKNEY ISLANDS COUNCIL  
**Towage Services**



 **ROBERT ALLAN LTD.**  
NAVAL ARCHITECTS AND MARINE ENGINEERS

**For chartering or further enquiries contact:**  
**Douglas Manson**- TOWAGE SUPERINTENDENT,  
Harbour Authority Building, Scapa, Orkney, KW15 1SD  
Tel: +44 (0)1856 873636 Fax: +44 (0)1856 873012  
Email: [douglas.manson@orkney.gov.uk](mailto:douglas.manson@orkney.gov.uk)