



Single Location Forecast - 7 Day

Scapa Flow (58°53'N 003°02'W)
Scapa Flow
Orkney Harbour DTNO_REF_19049545

offshore@dtn.com
+31 (0)30 8082022 (Utrecht office)
+44 (0)1224 042444 (Aberdeen office)
www.meteogroupoffshore.com

Issued on 09 July 2026, 14:01 UTC

Meteorological Situation

Low pressure near Iceland will move away and high pressure west of Hebrides will put a ridge towards Orkney on Friday. The high will reach Orkney on Sunday and remain settled in the Shetland basin till at least Thursday 16th. Calm winds and mainly fair and dry weather will prevail. However, from Friday into Saturday a weak upper air trough will cross Scapa and will trigger a few showers. Sunday trough Wednesday seems to be dry with light to moderate Easterly winds at Scapa. Local conditions next 72 hrs: Wind: variable direction, light. Sea temperature: 13-14C.

Warnings (next 24 Hours)

Gale ● Nil
Wind Shear ● Nil
Lightning Risk ● Low
Confidence ● Low

Criteria Levels

Winds 10m Spd
35 kts

UTC	Winds										Weather									
	10m				50m			100m			Type (text)	Air						Cloud		MSLP (hPa)
	Dir (text)	Spd (kts)	Risk (kts)	Gust (kts)	Dir (deg)	Spd (kts)	Gust (kts)	Dir (deg)	Spd (kts)	Gust (kts)		T10 (°C)	T50 (°C)	T100 (°C)	Td10 (°C)	Vis10 (text)	RH (%)	Base (ft)	Frac (%)	
Thursday 09 July 2026																				
12	SSE	7	9	10	180	9	13	180	10	14	nsw	16	16	16	13	md/gd	87	200	69	1017
15	S	5	7	8	180	7	10	180	8	11	nsw	16	16	16	13	good	84	500	73	1017
18	SSE	3	5	5	170	4	7	180	5	8	nsw	16	16	16	13	good	86	200	77	1017
21	SSE	1	4	3	190	3	5	200	5	7	nsw	15	16	16	14	good	92	1000	74	1018
Friday 10 July 2026																				
00	SW	2	5	4	230	4	6	250	5	7	nsw	14	15	16	14	md/gd	95	2000	73	1019
03	WNW	3	5	5	290	5	7	290	7	9	nsw	14	14	14	13	mod	97	200	76	1019
06	NW	3	5	5	310	5	6	310	5	7	nsw	14	14	13	13	good	93	1000	78	1020
09	NW	4	6	6	320	6	8	320	7	9	ra	14	14	14	12	good	88	2000	79	1021
12	NNW	6	8	8	340	7	10	340	7	10	ra	14	14	14	12	good	84	1000	79	1022
15	N	6	8	9	350	7	10	350	7	10	nsw	14	14	13	11	good	83	2000	79	1024
18	N	6	7	9	0	7	10	0	8	11	ra	13	13	13	11	good	83	3500	78	1024
21	NNE	4	6	7	10	6	9	10	7	10	ra	13	12	12	11	good	87	3500	78	1026
Saturday 11 July 2026																				
00	NNE	4	6	7	20	6	9	10	7	10	shra	13	12	12	11	good	88	3500	77	1026
03	NNE	4	6	7	30	6	9	20	7	10	shra	12	12	12	11	good	91	3500	72	1027
06	NNE	6	7	9	30	8	11	30	8	11	dz	13	12	12	11	good	89	1000	70	1028
09	NE	6	7	9	40	7	10	40	8	11	dz	13	13	12	11	good	85	1000	69	1029
12	ENE	7	8	10	50	7	10	40	7	10	dz	14	13	13	11	good	82	1000	66	1030
15	NE	6	8	9	40	7	10	40	7	10	nsw	14	13	13	10	good	80	1000	62	1030
18	NE	6	7	9	50	6	9	50	6	9	nsw	14	13	13	10	good	80	2000	60	1030
21	ENE	3	5	6	50	5	8	50	5	8	nsw	13	12	12	10	good	84	n/c	50	1031
Sunday 12 July 2026																				
00	ENE	3	4	5	50	4	6	40	4	7	nsw	12	12	12	10	good	85	n/c	29	1032
03	ENE	2	4	4	50	4	6	30	4	7	nsw	12	12	11	10	good	86	3500	48	1031



Single Location Forecast - 7 Day

Scapa Flow (58°53'N 003°02'W)
Scapa Flow
Orkney Harbour DTNO_REF_19049545

offshore@dtn.com
+31 (0)30 8082022 (Utrecht office)
+44 (0)1224 042444 (Aberdeen office)
www.meteogroupoffshore.com

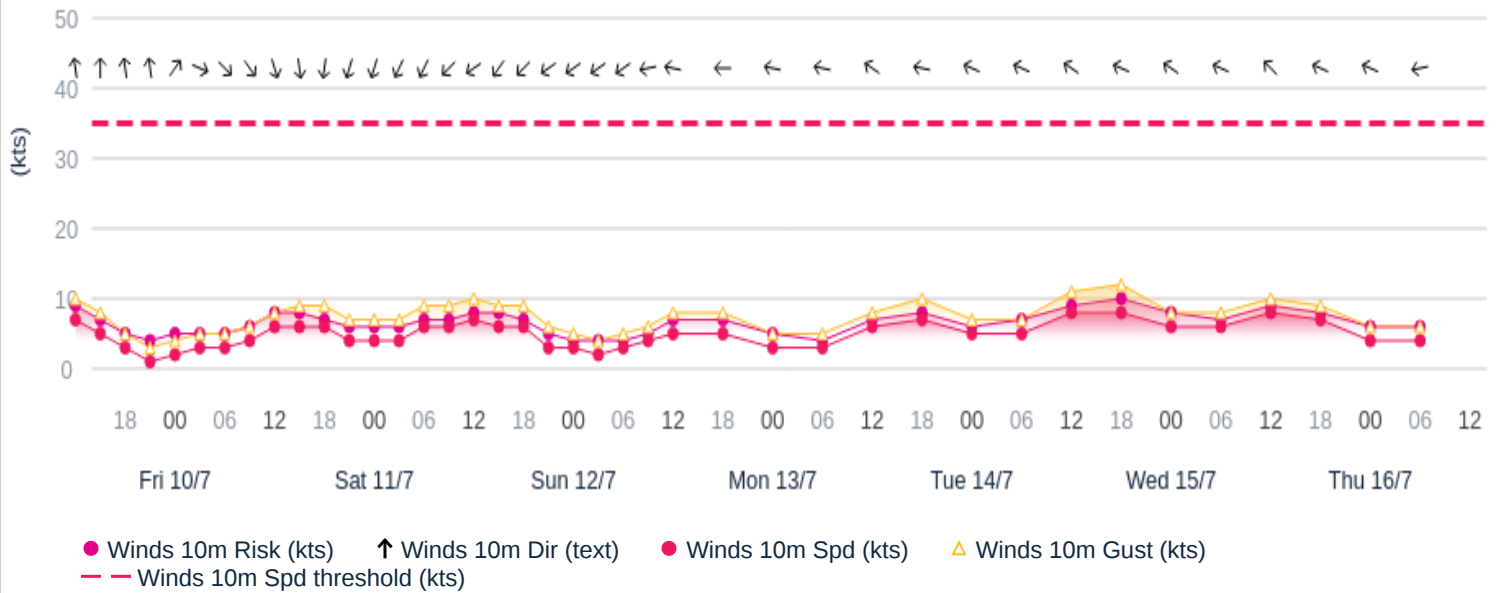
Issued on 09 July 2026, 14:01 UTC

UTC	Winds										Weather									
	10m				50m			100m			Type (text)	Air					Cloud		MSLP (hPa)	
	Dir (text)	Spd (kts)	Risk (kts)	Gust (kts)	Dir (deg)	Spd (kts)	Gust (kts)	Dir (deg)	Spd (kts)	Gust (kts)		T10 (°C)	T50 (°C)	T100 (°C)	Td10 (°C)	Vis10 (text)	RH (%)	Base (ft)		Frac (%)
06	ENE	3	4	5	50	4	7	40	4	7	nsw	12	12	12	10	good	83	3500	48	1032
09	E	4	5	6	70	4	6	60	4	7	nsw	13	13	12	9	good	78	2000	51	1032
12	E	5	7	8	90	5	8	80	5	8	nsw	14	13	13	9	good	74	2000	50	1033
18	E	5	7	8	90	5	8	90	5	8	nsw	14	13	13	9	good	73	nlc	9	1032
Monday 13 July 2026																				
00	E	3	5	5	110	4	6	110	5	6	nsw	12	12	12	9	good	82	nlc	4	1031
06	E	3	4	5	100	4	6	110	5	7	nsw	13	12	12	10	good	81	nlc	25	1031
12	ESE	6	7	8	120	6	8	120	6	9	nsw	14	14	13	10	good	76	3500	29	1030
18	E	7	8	10	110	8	11	110	8	11	nsw	14	14	13	11	good	81	1000	48	1029
Tuesday 14 July 2026																				
00	ESE	5	6	7	110	7	9	120	8	10	nsw	13	13	12	11	good	88	1000	54	1029
06	ESE	5	7	7	110	7	9	120	8	10	nsw	13	13	12	11	good	88	1000	53	1028
12	ESE	8	9	11	120	9	12	120	10	13	nsw	14	14	14	11	good	81	2000	52	1027
18	ESE	8	10	12	110	9	13	120	10	13	nsw	14	14	14	11	good	80	nlc	16	1026
Wednesday 15 July 2026																				
00	ESE	6	8	8	120	10	12	130	11	13	nsw	13	13	13	12	good	91	nlc	25	1025
06	ESE	6	7	8	120	10	12	130	11	13	nsw	14	13	13	13	good	94	500	53	1024
12	SE	8	9	10	140	9	12	150	10	13	nsw	15	15	15	13	good	86	1000	39	1023
18	ESE	7	8	9	120	8	11	130	9	12	dz	15	15	15	13	good	88	2000	46	1023
Thursday 16 July 2026																				
00	ESE	4	6	6	130	8	10	140	10	12	nsw	14	14	15	13	md/gd	96	100	56	1021
06	E	4	6	6	110	9	11	130	11	13	nsw	14	14	15	13	md/gd	96	200	57	1020

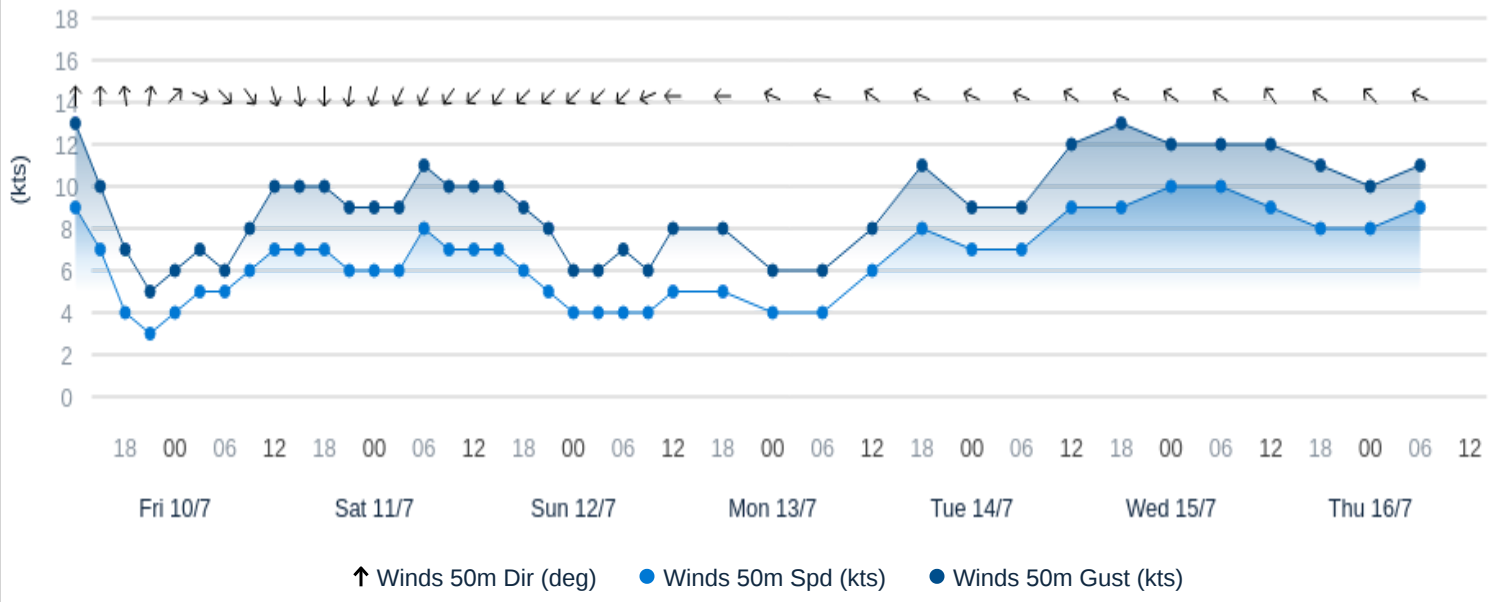
WX=Weather, FG=Fog, DZ=Drizzle, RA=Rain, SN=Snow, SHRA=Rainshower, SHSN=Snowshower, GR=Hail, TS=Thunderstorm, NSW=No sig weather

Copyright 2026© DTN

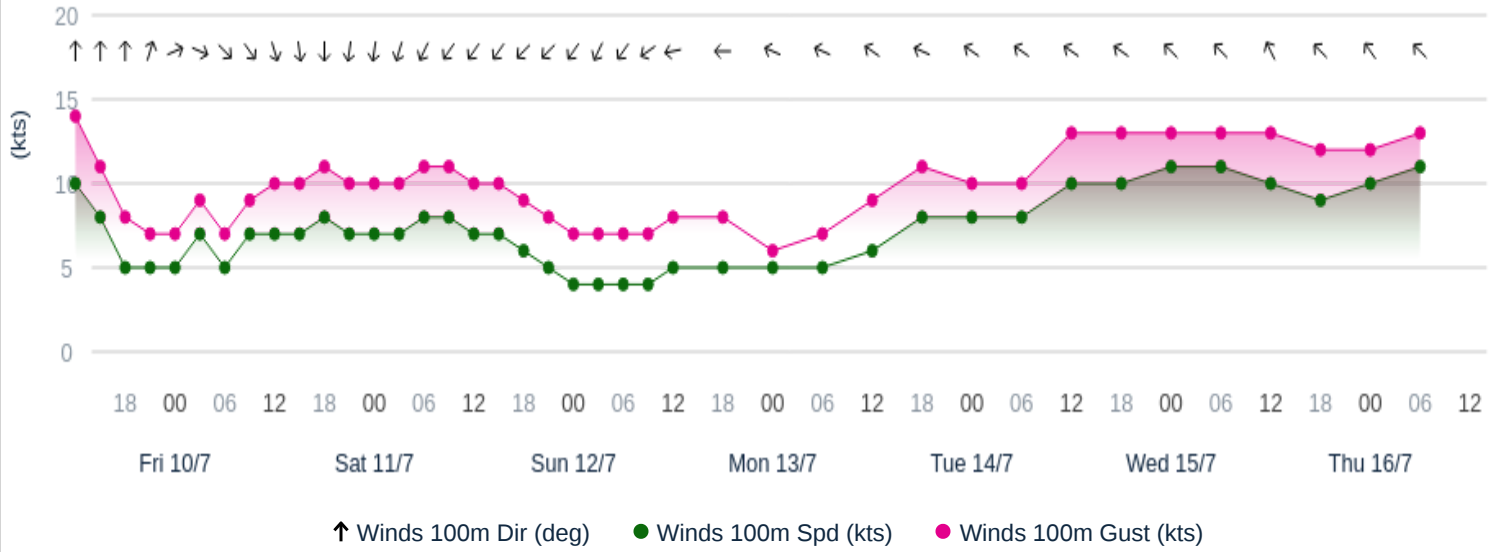
10m Wind Graph - 7 Day Scapa Flow



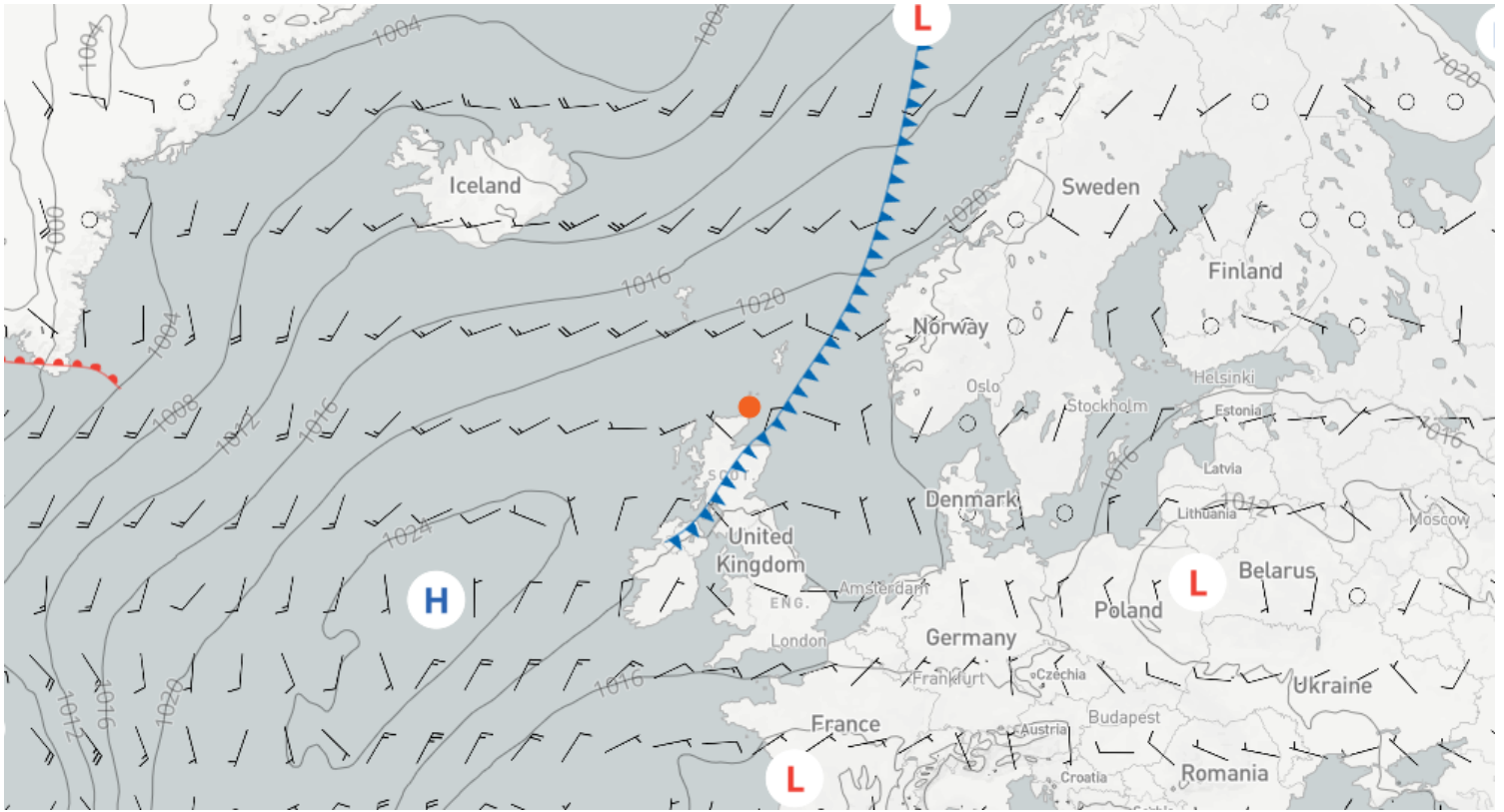
50m Wind Graph - 7 Day Scapa Flow



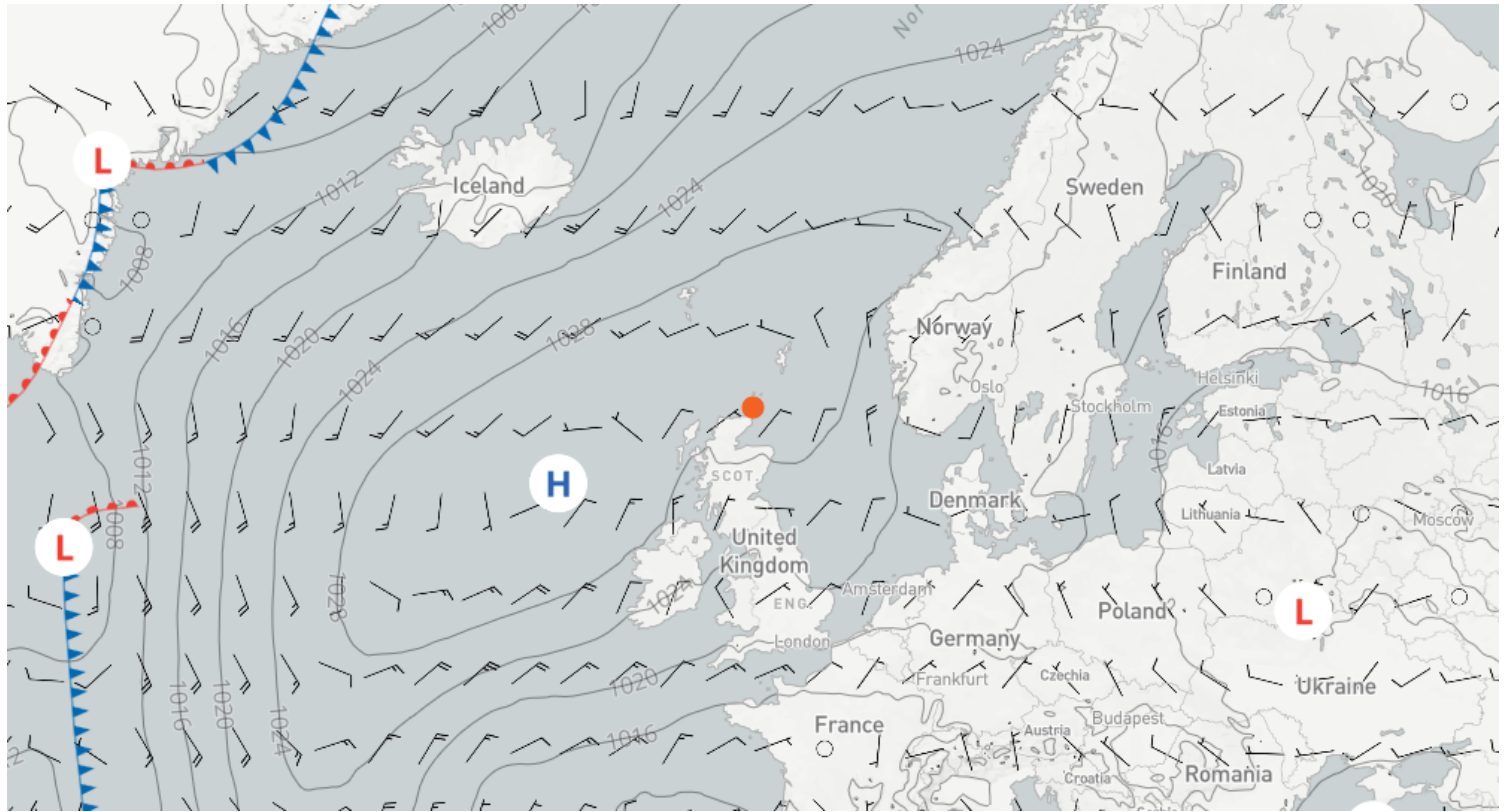
100m Wind Graph - 7 Day Scapa Flow



Issued on 09 July 2026, 12:00 UTC | Forecast for 10 July 2026, 12:00 UTC (+24) | 10m Wind Speed + Surface Pressure and Fronts



Issued on 09 July 2026, 12:00 UTC | Forecast for 11 July 2026, 12:00 UTC (+48) | 10m Wind Speed + Surface Pressure and Fronts



page intentionally left blank