



# Single Location Forecast - 7 Day

Scapa Flow (58°53'N 003°02'W)  
Scapa Flow  
Orkney Harbour DTNO\_REF\_19049545

offshore@dtn.com  
+31 (0)30 8082022 (Utrecht office)  
+44 (0)1224 042444 (Aberdeen office)  
www.meteogroupoffshore.com

Issued on 07 July 2026, 14:01 UTC

## Meteorological Situation

A ridge of high pressure is positioned from Biscay towards Scotland with its axis slowly shifting just east of the Orkneys. A depression is passing over Iceland to the northeast in the coming 24 hours, an associated frontal zone will be passing over the islands in the coming hours. It will be causing an overcast amount of clouds and periods of light rain/drizzle. During the coming days the Orkneys will remain on the west flank of the ridge, weather conditions will be mostly cloudy and at times some light precipitation is to be expected. The center of the high is slowly moving north from Biscay and expected to be over Scotland during the weekend, promoting better conditions. Local conditions next 72 hrs: Wind: SSE-ly, veering to W, light, increasing to moderate. Sea temperature: 13-14C.

### Warnings (next 24 Hours)

Gale  
● Nil

Wind Shear  
● Nil

Lightning Risk  
● Low

Confidence  
● Low

### Criteria Levels

Winds 10m Spd  
35 kts

UTC	Winds										Weather									
	10m				50m			100m			Type (text)	Air					Cloud		MSLP (hPa)	
	Dir (text)	Spd (kts)	Risk (kts)	Gust (kts)	Dir (deg)	Spd (kts)	Gust (kts)	Dir (deg)	Spd (kts)	Gust (kts)		T10 (°C)	T50 (°C)	T100 (°C)	Td10 (°C)	Vis10 (text)	RH (%)	Base (ft)		Frac (%)
<b>Tuesday 07 July 2026</b>																				
12	SSE	3	4	6	150	3	6	150	2	6	nsw	13	12	12	8	good	73	2000	78	1012
15	SSE	5	6	8	160	5	8	170	6	9	nsw	13	12	12	9	good	78	1000	79	1013
18	SSE	6	8	9	170	7	10	180	8	10	ra	13	12	12	11	good	90	1000	79	1014
21	S	6	8	8	200	9	11	210	10	12	ra	13	13	13	12	md/gd	96	1000	80	1014
<b>Wednesday 08 July 2026</b>																				
00	WSW	9	12	14	260	16	20	260	19	23	ra	13	13	13	13	md/gd	95	500	80	1014
03	W	11	13	16	270	16	21	270	18	23	dz	13	13	13	13	md/gd	96	500	79	1015
06	W	11	12	16	270	15	20	280	17	22	nsw	14	13	13	12	good	93	1000	79	1015
09	W	10	11	14	270	13	18	270	14	19	nsw	14	14	14	13	good	92	500	79	1016
12	WSW	11	13	15	260	13	17	270	14	18	dz	15	15	15	13	good	89	1000	73	1017
15	W	10	13	14	270	13	17	270	13	18	nsw	15	15	15	13	good	88	2000	63	1017
18	W	8	13	12	270	11	15	270	12	16	nsw	15	15	15	13	good	85	3500	46	1017
21	WSW	4	10	7	260	8	10	260	9	11	nsw	14	14	14	12	good	90	2000	60	1017
<b>Thursday 09 July 2026</b>																				
00	SW	3	8	6	240	5	7	240	5	8	nsw	14	14	14	12	good	91	1000	52	1017
03	S	3	6	6	200	6	8	210	6	9	nsw	13	14	14	12	good	94	2000	47	1016
06	S	5	7	7	200	8	10	200	9	11	dz	14	14	14	12	md/gd	90	2000	66	1016
09	S	6	8	8	190	9	10	200	9	11	nsw	15	16	16	13	mod	85	2000	69	1016
12	SSE	8	10	11	170	10	13	180	11	14	nsw	16	17	17	13	good	83	3500	59	1016
15	S	5	7	7	190	8	10	200	8	10	nsw	16	17	17	13	good	83	3500	75	1016
18	SSW	3	6	6	230	4	7	250	4	7	dz	16	16	17	14	good	86	2000	75	1016
21	SSE	1	4	3	240	3	5	310	3	5	nsw	15	15	16	13	good	92	3500	77	1017
<b>Friday 10 July 2026</b>																				



# Single Location Forecast - 7 Day

Scapa Flow (58°53'N 003°02'W)  
Scapa Flow  
Orkney Harbour DTNO\_REF\_19049545

offshore@dtn.com  
+31 (0)30 8082022 (Utrecht office)  
+44 (0)1224 042444 (Aberdeen office)  
www.meteogroupoffshore.com

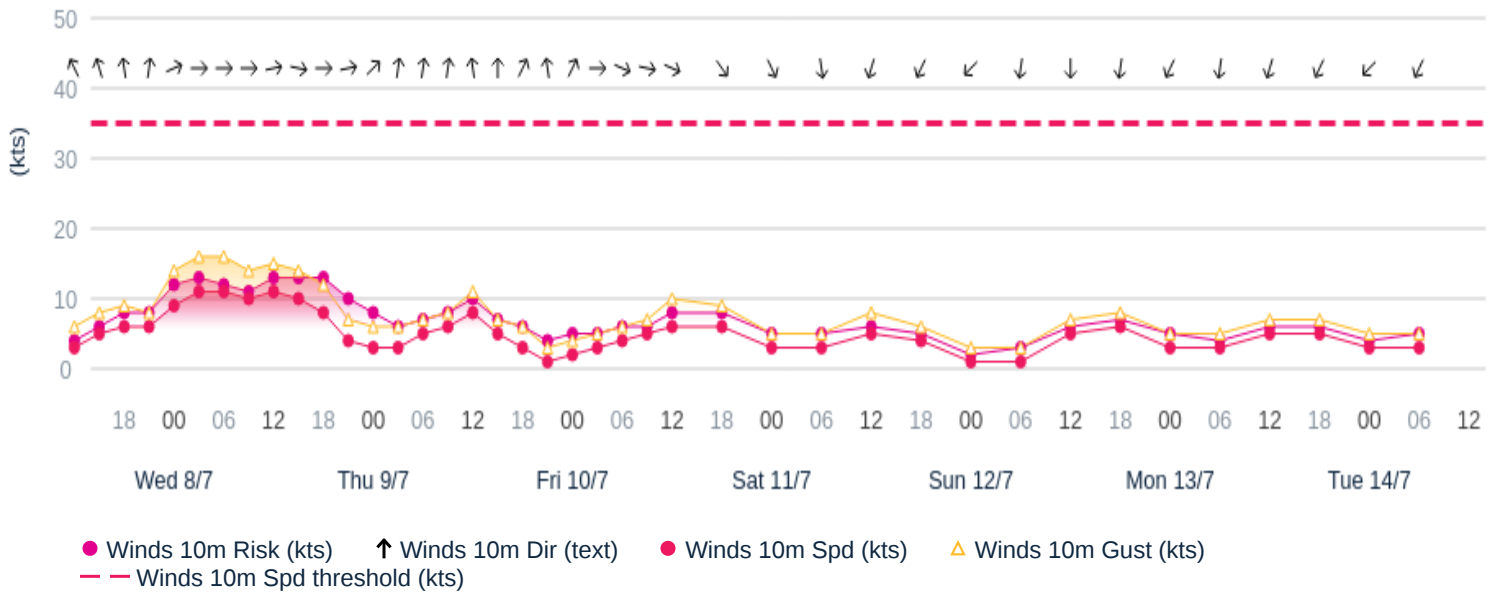
Issued on 07 July 2026, 14:01 UTC

UTC	Winds										Weather									
	10m				50m			100m			Type (text)	Air					Cloud		MSLP (hPa)	
	Dir (text)	Spd (kts)	Risk (kts)	Gust (kts)	Dir (deg)	Spd (kts)	Gust (kts)	Dir (deg)	Spd (kts)	Gust (kts)		T10 (°C)	T50 (°C)	T100 (°C)	Td10 (°C)	Vis10 (text)	RH (%)	Base (ft)		Frac (%)
00	SSW	2	5	4	280	4	6	350	4	6	dz	14	15	16	13	mod	94	3500	74	1017
03	W	3	5	5	270	6	8	270	8	10	nsw	14	14	15	13	mod	96	2000	74	1018
06	WNW	4	6	6	300	7	9	310	8	10	nsw	14	14	14	13	md/gd	91	1000	73	1019
09	W	5	6	7	290	8	10	310	9	11	ra	14	14	14	12	good	85	1000	74	1020
12	WNW	6	8	10	300	8	11	310	9	12	ra	15	14	14	11	good	77	3500	67	1021
18	NW	6	8	9	310	8	11	310	9	11	dz	14	14	13	11	good	80	3500	69	1024
<b>Saturday 11 July 2026</b>																				
00	NW	3	5	5	320	6	8	320	7	9	dz	13	12	12	11	good	87	3500	66	1026
06	N	3	5	5	340	5	7	330	6	8	dz	13	12	12	10	good	84	3500	65	1028
12	NNE	5	6	8	340	5	9	310	6	9	nsw	14	14	13	10	good	77	2000	65	1030
18	NNE	4	5	6	30	5	7	20	5	7	nsw	14	14	13	10	good	77	3500	58	1031
<b>Sunday 12 July 2026</b>																				
00	NE	1	2	3	20	3	5	350	4	6	nsw	13	12	12	10	good	84	2000	53	1032
06	N	1	3	3	350	4	6	330	6	8	nsw	13	13	12	10	good	85	3500	33	1032
12	N	5	6	7	340	7	9	330	8	10	nsw	14	14	13	10	good	76	3500	52	1033
18	N	6	7	8	0	8	11	340	9	12	nsw	14	14	13	10	good	75	2000	32	1032
<b>Monday 13 July 2026</b>																				
00	NNE	3	5	5	0	7	9	330	8	10	nsw	13	13	13	10	good	84	n/c	25	1032
06	N	3	4	5	350	7	9	340	8	10	nsw	13	13	13	11	good	86	2000	38	1031
12	NNE	5	6	7	0	7	10	350	8	11	nsw	15	14	14	11	good	78	n/c	47	1031
18	NNE	5	6	7	30	7	9	20	8	10	nsw	15	14	14	11	good	78	n/c	42	1030
<b>Tuesday 14 July 2026</b>																				
00	NE	3	4	5	40	6	8	30	7	9	nsw	13	13	13	11	good	87	n/c	18	1030
06	NNE	3	5	5	20	6	8	20	8	10	nsw	13	13	13	11	good	85	n/c	25	1029

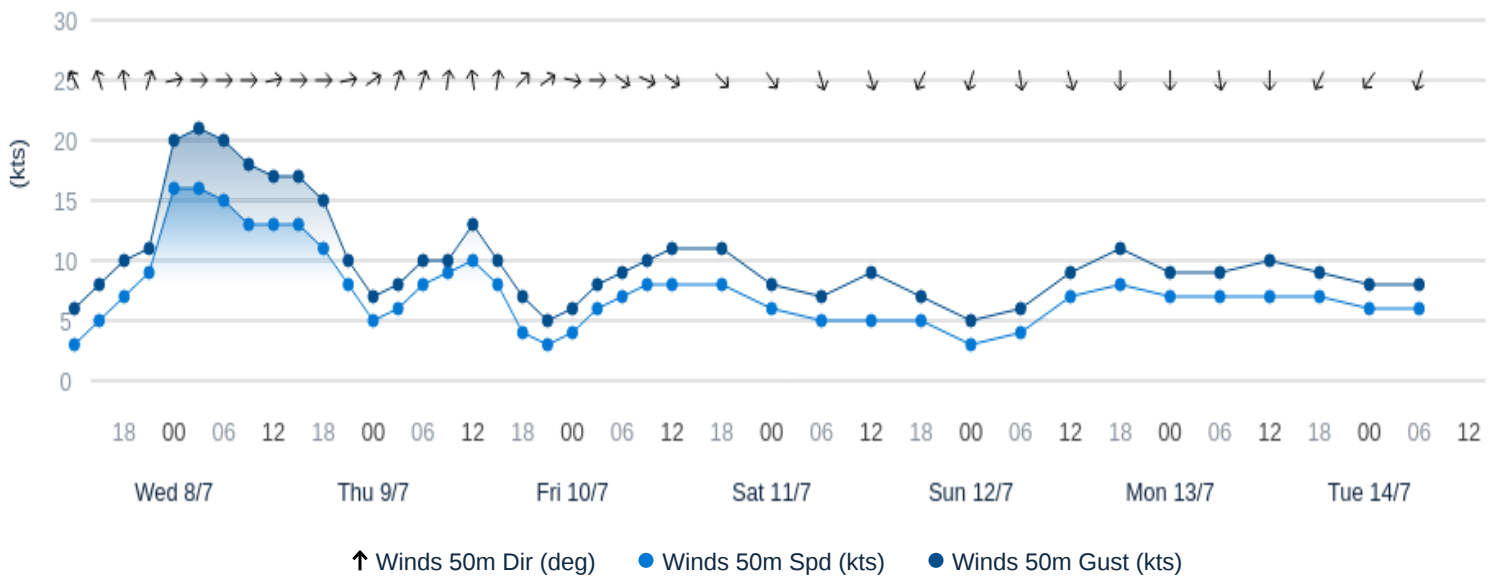
WX=Weather, FG=Fog, DZ=Drizzle, RA=Rain, SN=Snow, SHRA=Rainshower, SHSN=Snowshower, GR=Hail, TS=Thunderstorm, NSW=No sig weather

Copyright 2026© DTN

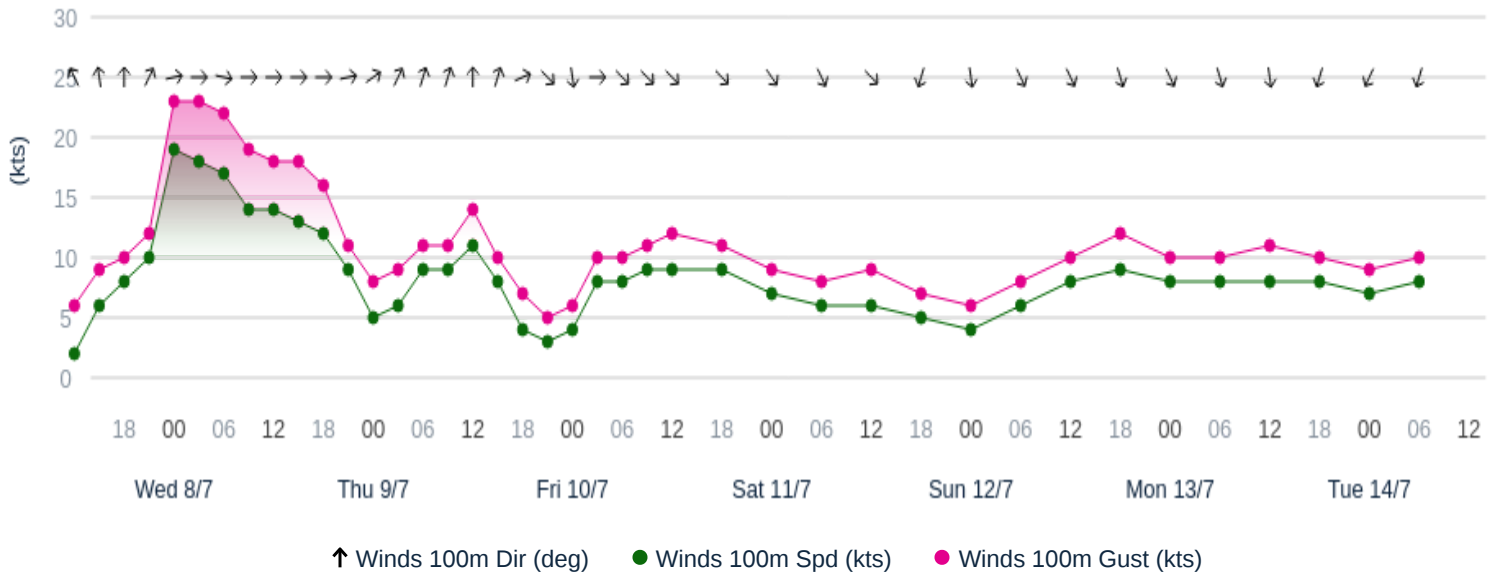
### 10m Wind Graph - 7 Day Scapa Flow



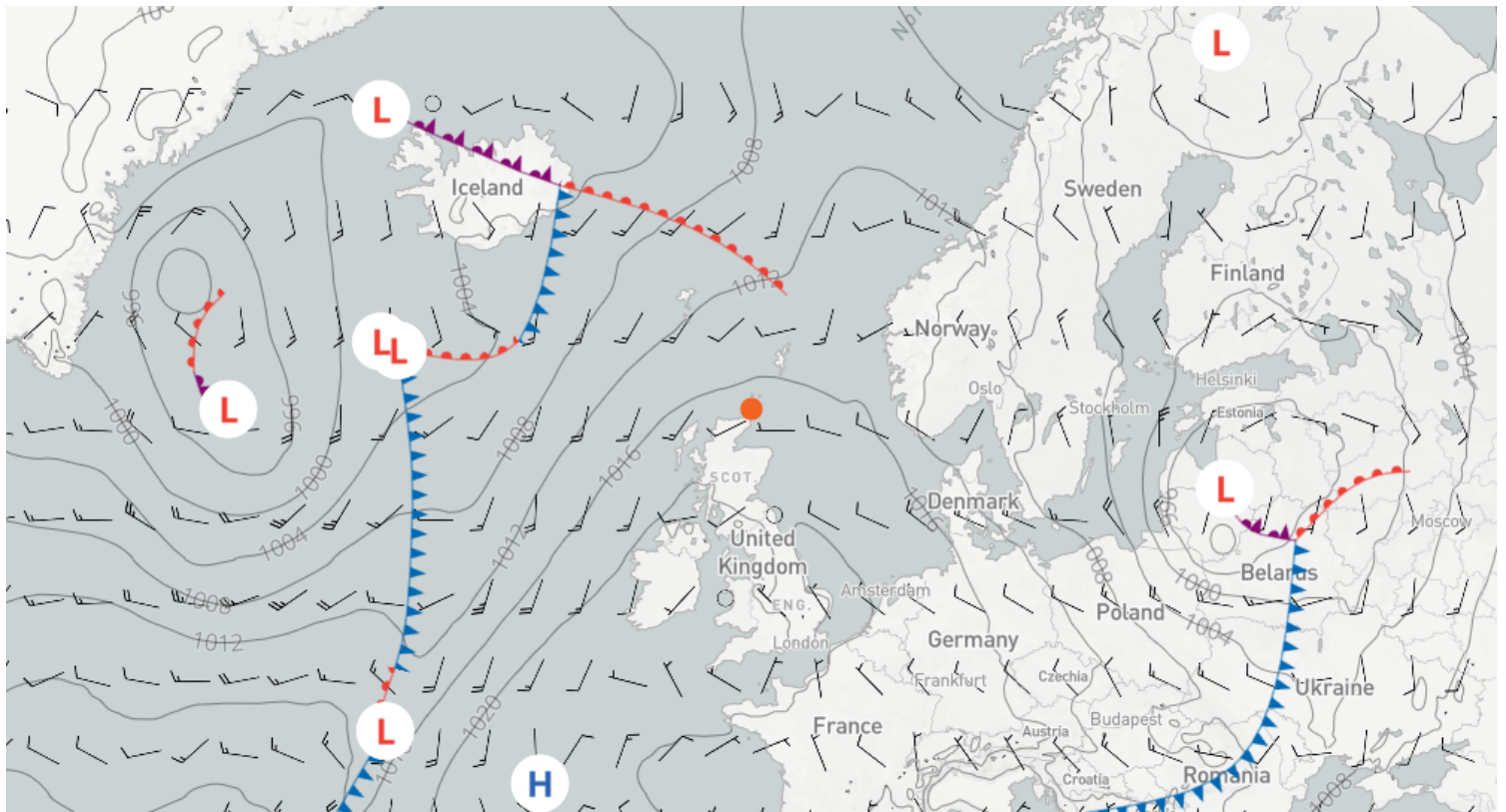
### 50m Wind Graph - 7 Day Scapa Flow



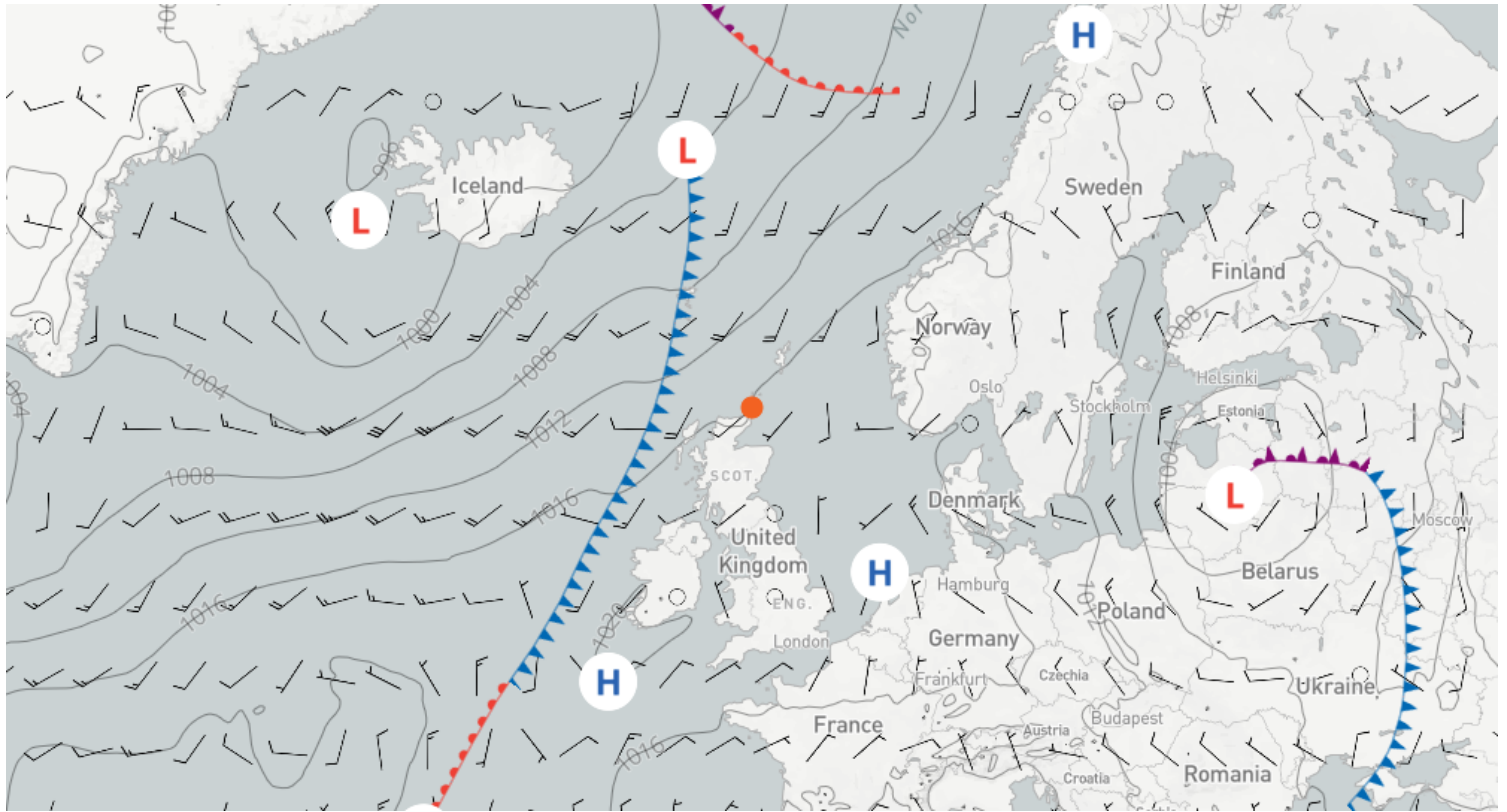
### 100m Wind Graph - 7 Day Scapa Flow



Issued on 07 July 2026, 12:00 UTC | Forecast for 08 July 2026, 12:00 UTC (+24) | 10m Wind Speed + Surface Pressure and Fronts



Issued on 07 July 2026, 12:00 UTC | Forecast for 09 July 2026, 12:00 UTC (+48) | 10m Wind Speed + Surface Pressure and Fronts



page intentionally left blank