



# Single Location Forecast - 7 Day

Scapa Flow (58°53'N 003°02'W)  
Scapa Flow  
Orkney Harbour DTNO\_REF\_19049545

offshore@dtn.com  
+31 (0)30 8082022 (Utrecht office)  
+44 (0)1224 042444 (Aberdeen office)  
www.meteogroupoffshore.com

Issued on 01 July 2026, 14:01 UTC

## Meteorological Situation

Deepening low pressure crossing Northern Scotland through today induces tighter pressure gradients across the North Sea, with a front passing through and winds picking up to a strong breeze this evening. The low continues its transit across Northern North Sea and into Norway through tomorrow, and combined with Azores high pressure building in from the south, W/NW-ly flow establishes with a risk of high winds. The low continues into the Baltic for the weekend and a new low develops south of Iceland, sustaining winds into Sunday. A ridge looks to build in towards the start of next week and conditions begin to settle into the mid-week. Local conditions next 72 hrs: Wind: SE-ly, veering to WNW, light, increasing to strong breeze. Sea temperature: 12-13C.

### Warnings (next 24 Hours)

Gale  
● Nil

Wind Shear  
● Nil

Lightning Risk  
● Low

Confidence  
● Low

### Criteria Levels

Winds 10m Spd  
35 kts

UTC	Winds										Weather									
	10m				50m			100m			Type (text)	Air					Cloud		MSLP (hPa)	
	Dir (text)	Spd (kts)	Risk (kts)	Gust (kts)	Dir (deg)	Spd (kts)	Gust (kts)	Dir (deg)	Spd (kts)	Gust (kts)		T10 (°C)	T50 (°C)	T100 (°C)	Td10 (°C)	Vis10 (text)	RH (%)	Base (ft)		Frac (%)
<b>Wednesday 01 July 2026</b>																				
12	SE	5	6	8	140	5	8	150	5	8	dz	15	14	14	12	good	82	2000	75	1020
15	SE	10	11	13	130	11	15	140	12	16	dz	14	13	13	12	good	86	2000	79	1017
18	SE	13	14	18	130	16	23	130	18	24	ra	13	13	13	12	mod	91	1000	79	1013
21	SSE	11	13	16	160	15	19	170	16	21	shra	14	14	14	13	md/gd	95	nlc	79	1008
<b>Thursday 02 July 2026</b>																				
00	SSE	13	15	18	170	17	22	180	18	24	shra	13	13	13	12	good	91	nlc	78	1004
03	WSW	10	11	14	260	15	19	270	17	21	shra	13	13	13	12	good	94	1000	78	1002
06	WNW	23	25	33	300	29	39	300	31	41	ra	13	13	12	12	good	91	1000	71	1004
09	WNW	25	28	37	300	30	42	300	33	44	ra	13	13	12	10	good	82	1000	59	1008
12	WNW	25	28	37	290	29	41	290	30	42	nsw	14	13	13	10	good	77	2000	39	1012
15	WNW	24	27	35	290	28	39	290	30	41	nsw	13	13	12	9	good	76	3500	33	1015
18	WNW	21	24	31	290	26	35	290	27	37	dz	13	12	12	8	good	74	3500	53	1017
21	W	17	19	24	280	21	28	280	23	30	dz	12	12	11	9	good	79	3500	48	1019
<b>Friday 03 July 2026</b>																				
00	W	16	18	22	270	20	26	270	22	28	nsw	12	12	11	9	good	81	2000	54	1020
03	WSW	15	17	22	260	20	26	260	22	29	nsw	12	12	11	9	good	82	3500	60	1020
06	WSW	14	17	21	250	17	24	250	19	25	nsw	13	12	12	10	good	82	3500	51	1020
09	WSW	17	19	24	250	20	28	250	22	30	nsw	14	13	13	10	good	78	3500	72	1020
12	WSW	17	20	26	250	22	29	260	23	31	nsw	15	15	14	10	good	74	3500	72	1021
15	WSW	17	19	25	260	21	29	260	23	31	dz	15	15	15	10	good	74	3500	74	1020
18	WSW	13	16	19	250	17	23	250	19	25	dz	15	15	15	11	good	78	nlc	73	1019
21	SW	9	12	12	220	12	15	230	13	16	ra	14	14	14	11	good	85	nlc	77	1017
<b>Saturday 04 July 2026</b>																				



# Single Location Forecast - 7 Day

Scapa Flow (58°53'N 003°02'W)  
Scapa Flow  
Orkney Harbour DTNO\_REF\_19049545

offshore@dtn.com  
+31 (0)30 8082022 (Utrecht office)  
+44 (0)1224 042444 (Aberdeen office)  
www.meteogroupoffshore.com

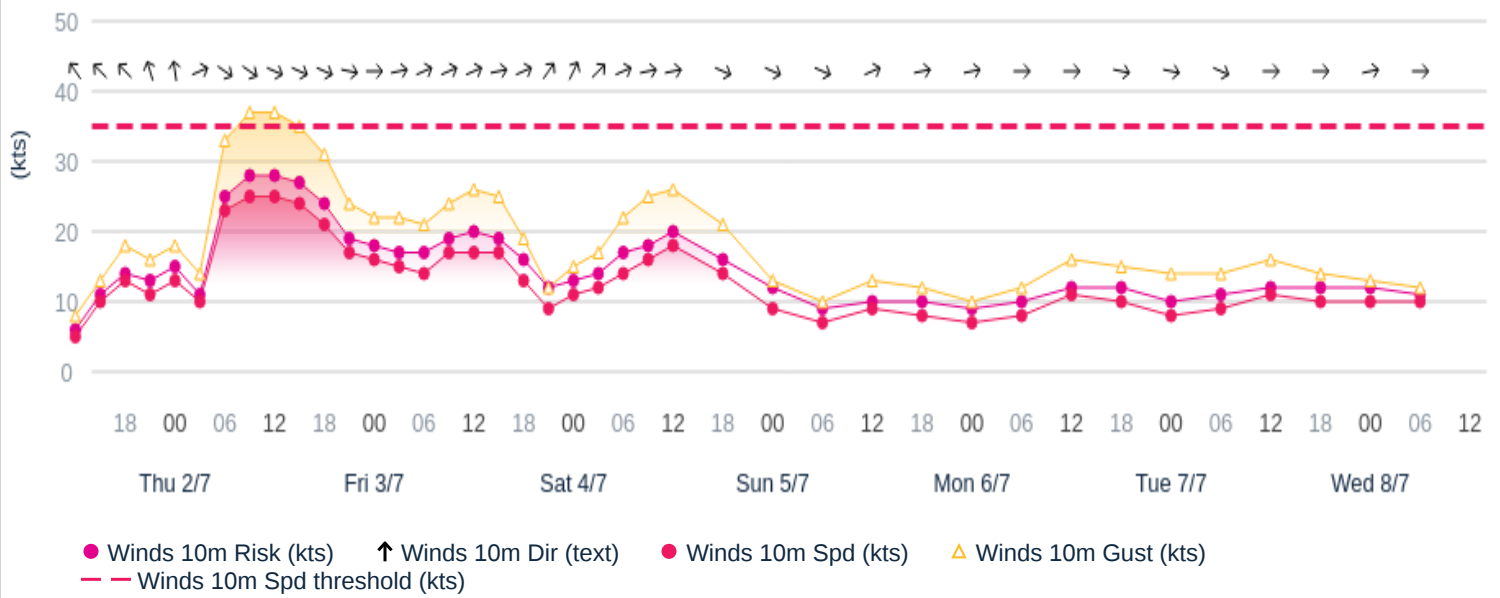
Issued on 01 July 2026, 14:01 UTC

Winds											Weather									
UTC	10m				50m			100m			Type (text)	Air						Cloud		MSLP (hPa)
	Dir (text)	Spd (kts)	Risk (kts)	Gust (kts)	Dir (deg)	Spd (kts)	Gust (kts)	Dir (deg)	Spd (kts)	Gust (kts)		T10 (°C)	T50 (°C)	T100 (°C)	Td10 (°C)	Vis10 (text)	RH (%)	Base (ft)	Frac (%)	
00	SSW	11	13	15	200	15	19	190	17	21	ra	13	14	14	12	md/gd	88	nlc	77	1015
03	SW	12	14	17	220	18	22	220	20	25	ra	13	13	13	12	good	91	2000	79	1012
06	WSW	14	17	22	250	22	29	250	25	32	ra	14	14	14	12	md/gd	92	1000	79	1011
09	WSW	16	18	25	260	23	30	270	25	33	ra	14	14	14	12	good	86	1000	69	1012
12	WSW	18	20	26	270	22	30	270	24	32	ra	15	14	14	12	good	84	500	68	1014
18	WNW	14	16	21	290	17	23	290	18	25	dz	14	13	13	10	good	81	1000	56	1018
<b>Sunday 05 July 2026</b>																				
00	WNW	9	12	13	290	13	16	290	15	18	dz	12	12	12	9	good	81	3500	51	1021
06	WNW	7	9	10	280	10	13	280	11	14	dz	12	12	11	8	good	76	3500	64	1020
12	WSW	9	10	13	260	11	15	260	12	16	dz	14	13	13	9	good	73	3500	71	1019
18	WSW	8	10	12	270	13	16	270	15	18	ra	13	13	12	10	good	79	3500	73	1017
<b>Monday 06 July 2026</b>																				
00	WSW	7	9	10	260	13	16	260	16	19	ra	13	12	12	10	good	85	3500	78	1015
06	W	8	10	12	270	13	17	270	16	19	ra	13	12	12	11	good	86	3500	73	1013
12	W	11	12	16	260	15	20	260	16	21	ra	14	14	13	10	good	76	3500	67	1014
18	W	10	12	15	270	15	20	270	17	22	ra	14	14	13	10	good	77	nlc	61	1013
<b>Tuesday 07 July 2026</b>																				
00	W	8	10	14	280	12	17	280	14	19	ra	13	13	13	10	good	82	nlc	64	1013
06	WNW	9	11	14	290	11	16	290	13	17	dz	13	13	12	11	good	86	nlc	62	1013
12	W	11	12	16	260	10	16	250	9	16	dz	14	14	14	10	good	77	nlc	73	1014
18	W	10	12	14	260	12	16	250	13	17	ra	14	14	14	11	good	80	2000	74	1013
<b>Wednesday 08 July 2026</b>																				
00	WSW	10	12	13	260	14	17	260	16	19	ra	14	14	13	12	good	89	500	78	1012
06	W	10	11	12	270	13	15	260	14	17	ra	14	13	13	12	good	90	1000	73	1011

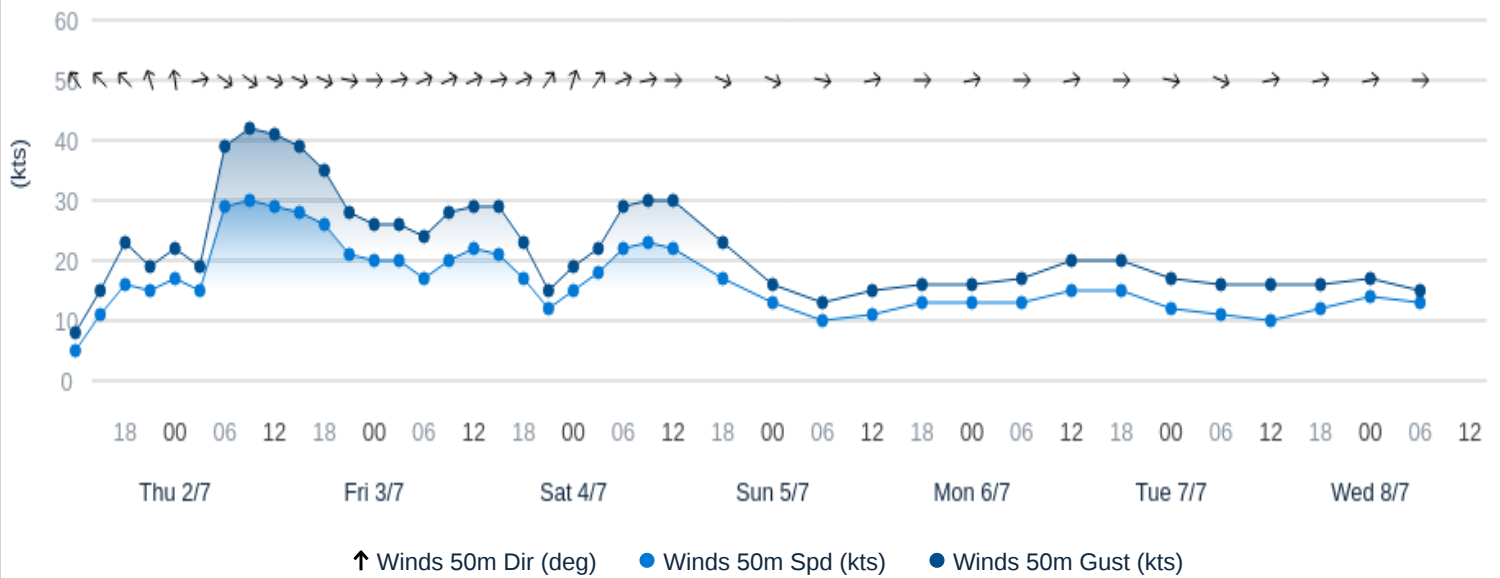
WX=Weather, FG=Fog, DZ=Drizzle, RA=Rain, SN=Snow, SHRA=Rainshower, SHSN=Snowshower, GR=Hail, TS=Thunderstorm, NSW=No sig weather

Copyright 2026© DTN

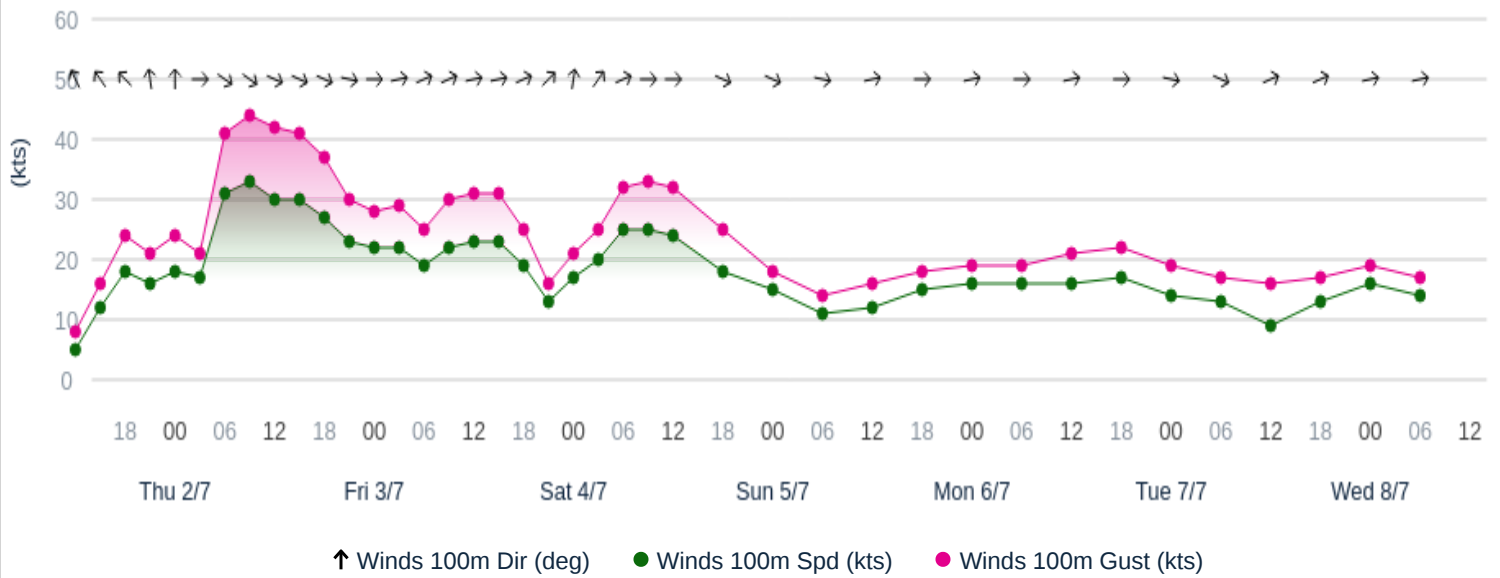
### 10m Wind Graph - 7 Day Scapa Flow



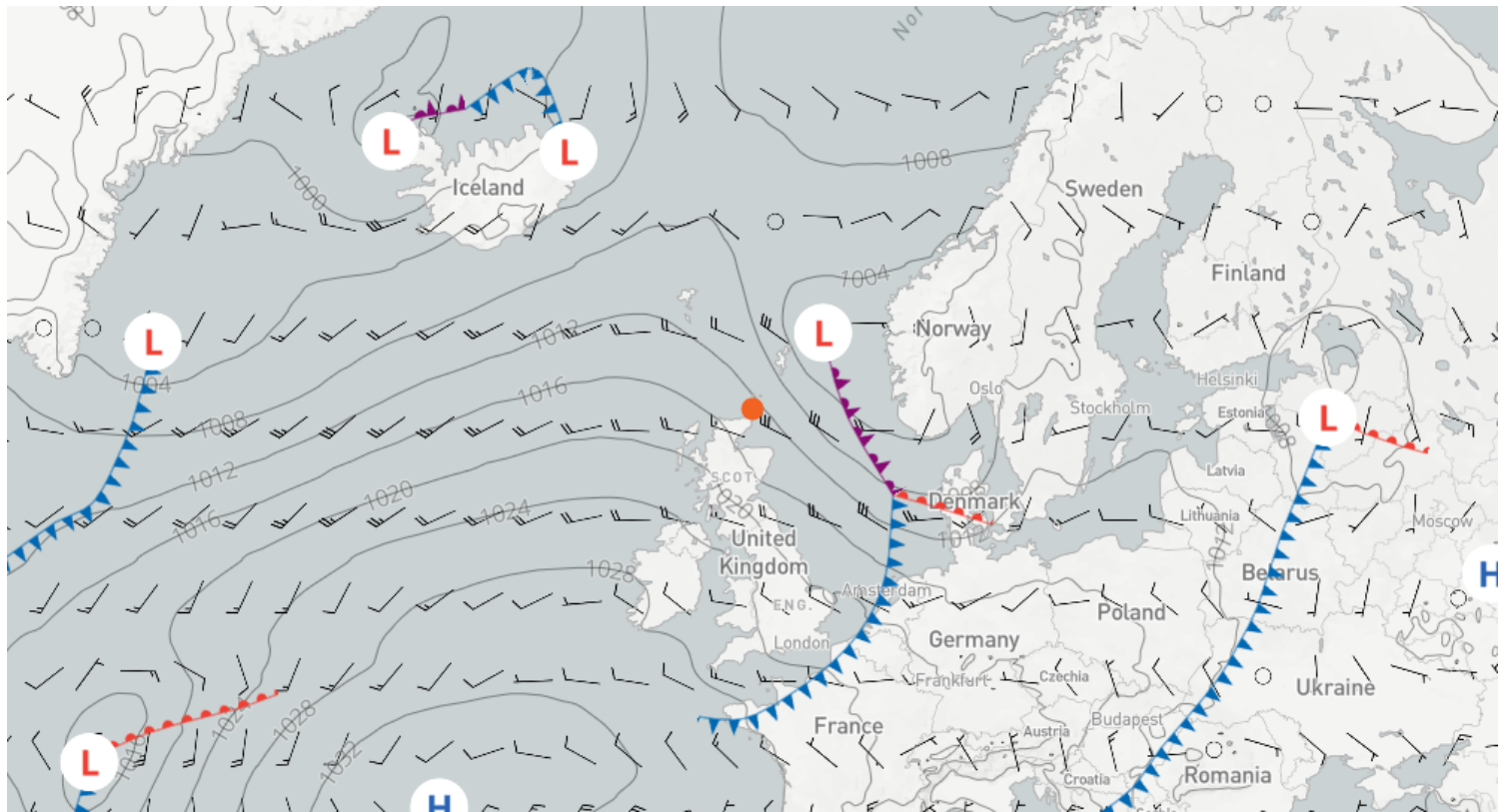
### 50m Wind Graph - 7 Day Scapa Flow



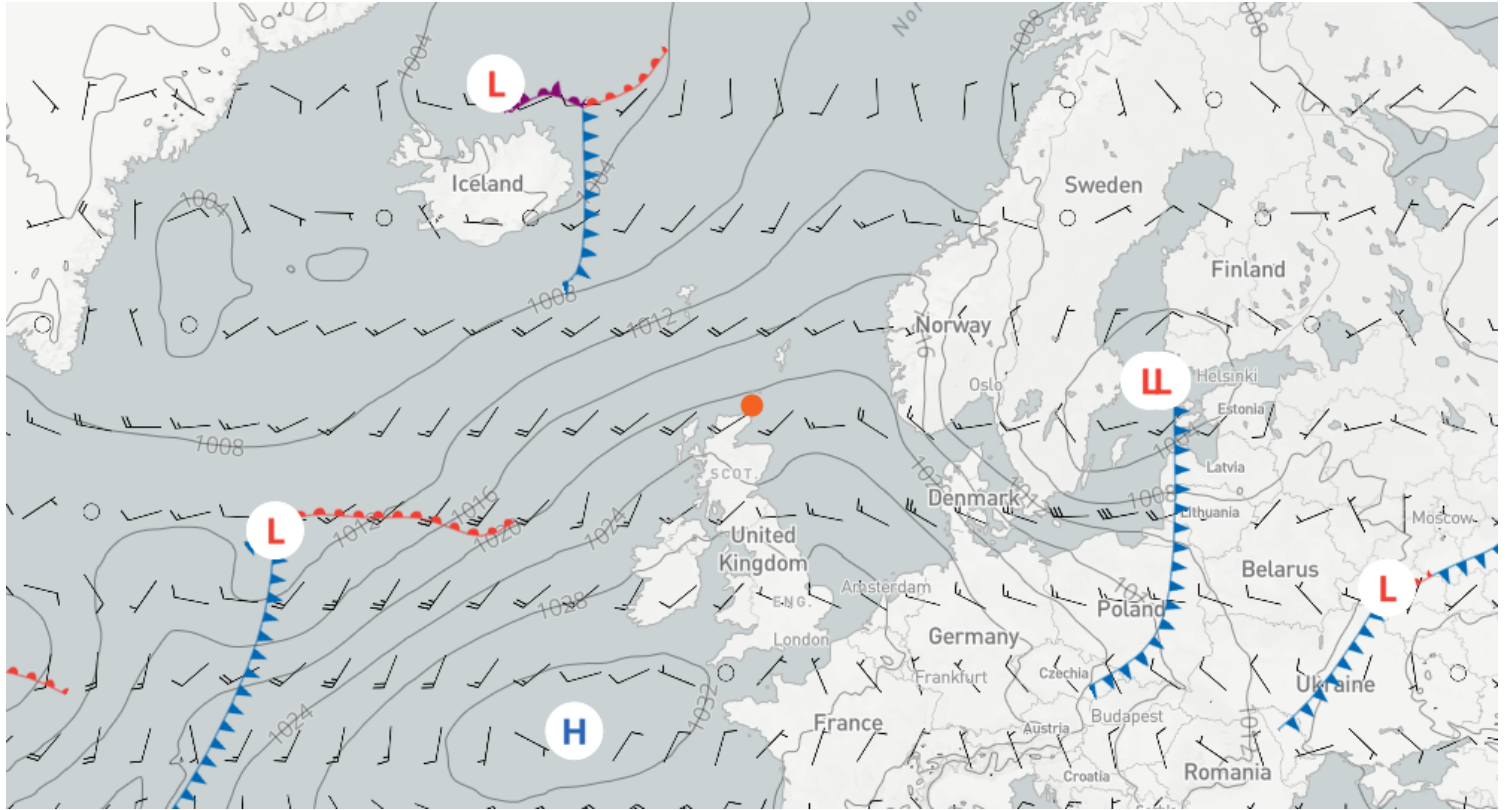
### 100m Wind Graph - 7 Day Scapa Flow



Issued on 01 July 2026, 12:00 UTC | Forecast for 02 July 2026, 12:00 UTC (+24) | 10m Wind Speed + Surface Pressure and Fronts



Issued on 01 July 2026, 12:00 UTC | Forecast for 03 July 2026, 12:00 UTC (+48) | 10m Wind Speed + Surface Pressure and Fronts



page intentionally left blank