



# Single Location Forecast - 7 Day

Scapa Flow (58°53'N 003°02'W)  
Scapa Flow  
Orkney Harbour DTNO\_REF\_19049545

offshore@dtm.com  
+31 (0)30 8082022 (Utrecht office)  
+44 (0)1224 042444 (Aberdeen office)  
www.meteogroupoffshore.com

Issued on 26 April 2025, 14:01 UTC

## Meteorological Situation

A dissipating front associated with low pressure near to Iceland is expected to pass across the UK today. Another front is forecast to pass across Scotland and Northern Ireland tomorrow with will bring rain to Orkney through Sunday and Monday. Mostly gentle to moderate winds are expected. High pressure will then influence Orkney and bring some drier conditions. Local conditions next 72 hrs: Wind: SSE-ly, veering to S, moderate or fresh breeze. Sea temperature: 9-10C.

### Warnings (next 24 Hours)

Gale ● Nil  
Wind Shear ● Nil  
Lightning Risk ● Low  
Confidence ● Low

### Criteria Levels

Winds 10m Spd  
35 kts

UTC	Winds										Weather									
	10m				50m			100m			Type (text)	Air						Cloud		MSLP (hPa)
	Dir (text)	Spd (kts)	Risk (kts)	Gust (kts)	Dir (deg)	Spd (kts)	Gust (kts)	Dir (deg)	Spd (kts)	Gust (kts)		T10 (°C)	T50 (°C)	T100 (°C)	Td10 (°C)	Vis10 (text)	RH (%)	Base (ft)	Frac (%)	
<b>Saturday 26 April 2025</b>																				
12	SSE	16	19	21	160	21	27	170	22	28	nsw	10	10	9	8	good	85	nlc	69	1020
15	SSE	15	18	19	160	20	26	170	21	27	nsw	11	11	10	8	good	84	nlc	71	1020
18	SSE	12	15	16	170	17	22	170	20	26	shra	10	10	10	9	good	90	nlc	70	1019
21	SSE	9	12	13	170	14	19	170	17	22	nsw	10	10	10	9	good	94	nlc	70	1019
<b>Sunday 27 April 2025</b>																				
00	SSE	9	12	13	180	17	22	180	20	26	nsw	10	10	11	9	good	93	nlc	71	1017
03	S	13	16	17	180	21	27	180	25	32	shra	10	10	10	8	good	91	nlc	79	1015
06	S	15	18	20	180	24	31	180	27	34	ra	10	10	10	8	md/gd	91	3500	79	1014
09	SSW	14	17	19	200	19	25	210	22	28	dz	12	12	12	9	good	84	3500	62	1015
12	SW	11	14	15	240	12	16	250	13	18	dz	12	12	12	9	good	78	3500	56	1017
15	SW	8	9	11	240	9	13	250	10	13	ra	12	12	12	8	good	77	3500	62	1017
18	S	5	6	8	190	9	13	190	11	15	ra	11	11	11	9	good	89	3500	79	1017
21	SSW	6	7	9	200	11	15	200	13	17	ra	11	11	11	10	mod	96	nlc	79	1017
<b>Monday 28 April 2025</b>																				
00	SSW	10	11	14	210	16	21	220	19	25	ra	11	12	12	10	md/gd	94	nlc	79	1016
03	SW	8	10	11	240	14	17	240	17	19	ra	11	12	12	10	good	93	2000	79	1016
06	SW	8	9	10	240	14	16	250	16	19	nsw	11	11	12	10	good	93	3500	79	1017
09	SW	8	10	11	250	12	15	250	14	17	nsw	12	12	12	10	good	90	1000	79	1018
12	WSW	10	11	13	260	14	17	260	16	19	nsw	12	12	12	10	good	85	1000	79	1020
15	WSW	9	10	12	260	13	16	260	15	18	ra	12	12	12	10	md/gd	86	2000	79	1021
18	WSW	5	7	7	250	11	13	260	13	15	ra	11	11	11	10	mod	91	2000	79	1021
21	SW	6	7	9	240	12	14	240	15	17	ra	11	11	11	10	good	96	2000	79	1022
<b>Tuesday 29 April 2025</b>																				
00	SW	7	8	9	230	13	15	230	16	18	ra	11	11	11	10	good	93	1000	79	1022
03	WSW	8	9	11	250	15	17	250	18	20	nsw	10	10	10	9	good	93	1000	79	1022



# Single Location Forecast - 7 Day

Scapa Flow (58°53'N 003°02'W)  
Scapa Flow  
Orkney Harbour DTNO\_REF\_19049545

offshore@dtn.com  
+31 (0)30 8082022 (Utrecht office)  
+44 (0)1224 042444 (Aberdeen office)  
www.meteogroupoffshore.com

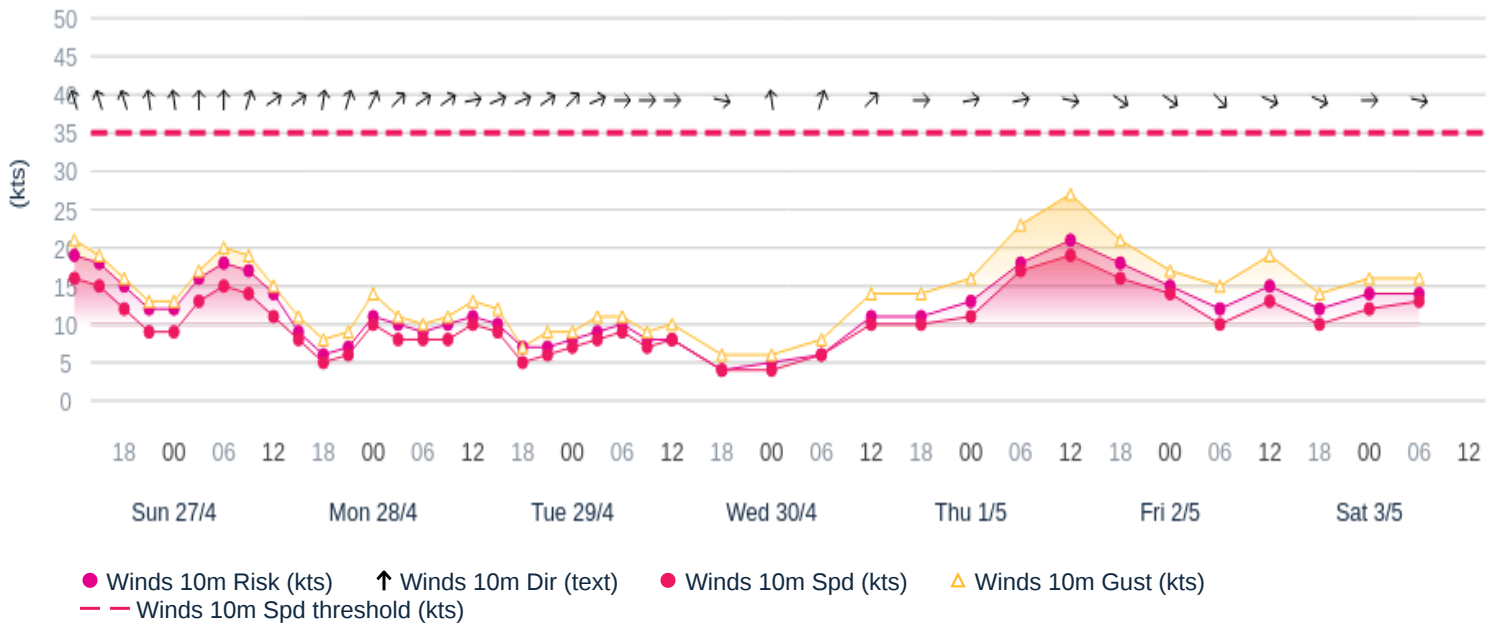
Issued on 26 April 2025, 14:01 UTC

UTC	Winds										Weather									
	10m				50m			100m			Type (text)	Air					Cloud		MSLP (hPa)	
	Dir (text)	Spd (kts)	Risk (kts)	Gust (kts)	Dir (deg)	Spd (kts)	Gust (kts)	Dir (deg)	Spd (kts)	Gust (kts)		T10 (°C)	T50 (°C)	T100 (°C)	Td10 (°C)	Vis10 (text)	RH (%)	Base (ft)		Frac (%)
06	W	9	10	11	270	14	17	270	17	19	nsw	10	10	10	9	good	94	1000	78	1023
09	W	7	8	9	280	9	12	280	10	13	nsw	11	11	10	9	good	88	1000	77	1024
12	W	8	8	10	270	9	12	280	10	13	nsw	11	11	11	9	good	84	2000	76	1024
18	W	4	4	6	260	6	8	250	7	9	nsw	11	11	11	9	good	86	2000	67	1023
<b>Wednesday 30 April 2025</b>																				
00	SSE	4	5	6	170	8	10	160	10	12	nsw	9	10	10	9	good	96	3500	57	1023
06	SSW	6	6	8	200	12	13	200	14	16	nsw	10	10	11	9	good	93	3500	53	1021
12	SW	10	11	14	230	15	19	220	17	21	nsw	12	12	12	10	good	84	100	73	1021
18	W	10	11	14	270	16	20	270	18	23	nsw	11	11	11	10	good	91	1000	78	1019
<b>Thursday 01 May 2025</b>																				
00	WSW	11	13	16	260	18	22	260	20	25	nsw	10	9	9	8	good	91	2000	73	1018
06	WSW	17	18	23	270	23	29	270	26	32	nsw	9	9	8	6	good	83	3500	58	1017
12	W	19	21	27	280	24	32	280	27	34	nsw	10	10	9	6	good	74	2000	41	1018
18	WNW	16	18	21	300	19	24	300	20	25	ra	9	9	8	6	good	79	3500	30	1020
<b>Friday 02 May 2025</b>																				
00	WNW	14	15	17	300	17	21	300	19	23	dz	9	8	8	5	good	78	3500	55	1022
06	NW	10	12	15	300	12	16	300	13	17	dz	8	8	8	5	good	77	3500	56	1024
12	WNW	13	15	19	280	15	20	270	15	21	nsw	10	10	9	5	good	72	3500	49	1025
18	WNW	10	12	14	280	13	17	260	14	18	dz	10	9	9	6	good	79	1000	69	1025
<b>Saturday 03 May 2025</b>																				
00	W	12	14	16	280	17	21	280	19	23	nsw	9	9	9	8	good	90	500	71	1023
06	W	13	14	16	280	16	19	280	18	20	dz	10	9	9	8	good	88	1000	74	1020

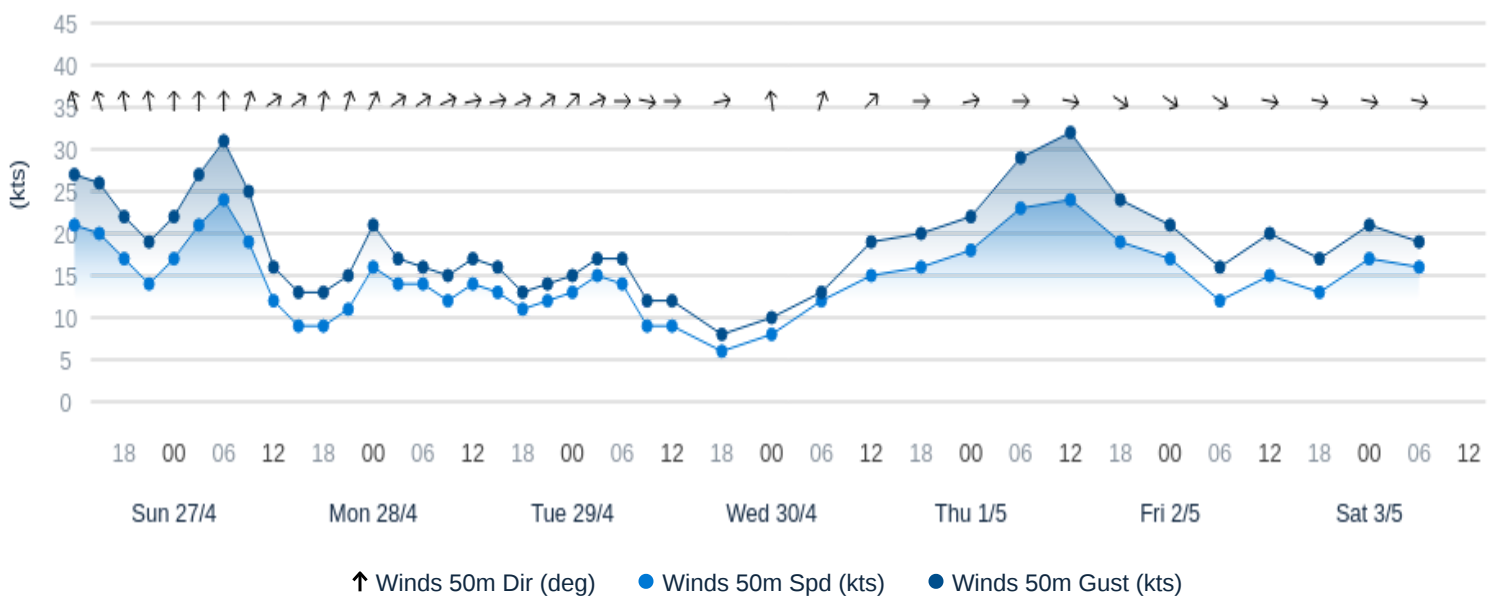
WX=Weather, FG=Fog, DZ=Drizzle, RA=Rain, SN=Snow, SHRA=Rainshower, SHSN=Snowshower, GR=Hail, TS=Thunderstorm, NSW=No sig weather

Copyright 2025© DTN

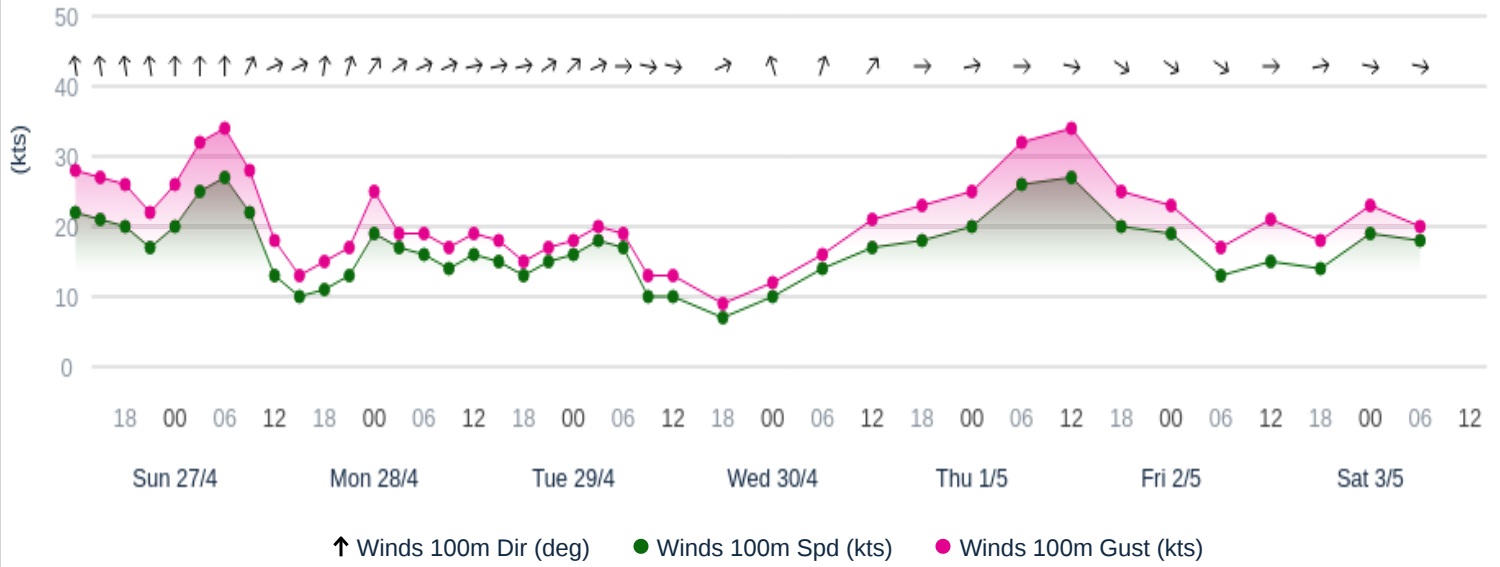
### 10m Wind Graph - 7 Day Scapa Flow



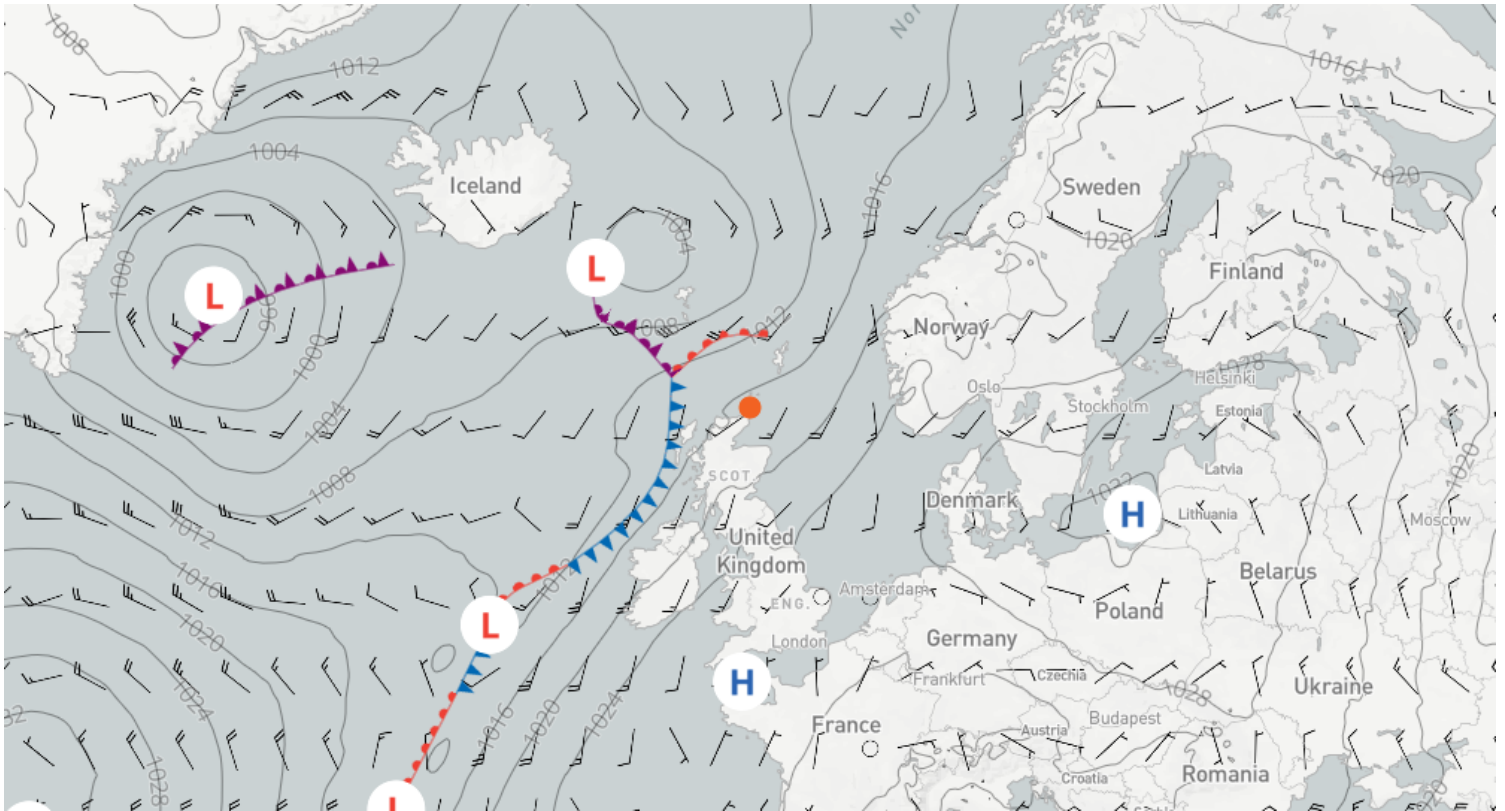
### 50m Wind Graph - 7 Day Scapa Flow



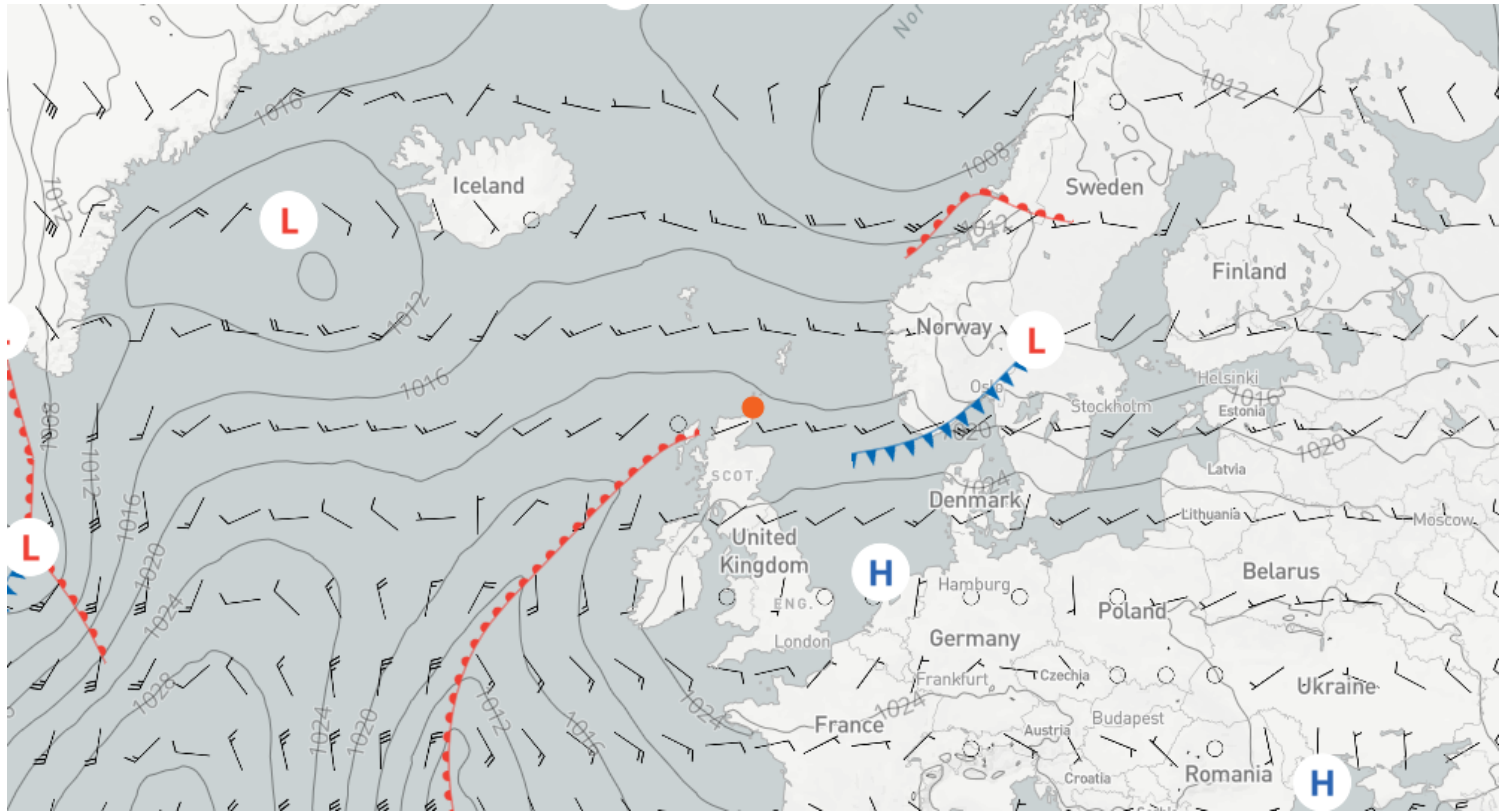
### 100m Wind Graph - 7 Day Scapa Flow



Issued on 26 April 2025, 12:00 UTC | Forecast for 27 April 2025, 12:00 UTC (+24) | 10m Wind Speed + Surface Pressure and Fronts



Issued on 26 April 2025, 12:00 UTC | Forecast for 28 April 2025, 12:00 UTC (+48) | 10m Wind Speed + Surface Pressure and Fronts



page intentionally left blank