



Single Location Forecast - 7 Day

Scapa Flow (58°53'N 003°02'W)
Scapa Flow
Orkney Harbour DTNO_REF_19049545

offshore@dtn.com
+31 (0)30 8082022 (Utrecht office)
+44 (0)1224 042444 (Aberdeen office)
www.meteogroupoffshore.com

Issued on 22 March 2025, 04:01 UTC

Meteorological Situation

High pressure over Scandinavia is expected to continue to move eastwards towards western Russia while low pressure moves into the Greenland Sea. Strong SSE'ly winds are forecast today, a frontal zone is expected to pass over which will bring some rain this morning. Winds are forecast to reduce tomorrow as high pressure starts to ridge towards the UK from the Azores. Light to gentle winds are expected through Sunday with the rain clearing through the afternoon. Local conditions next 72 hrs: Wind: SE-ly, strong breeze (risk for near gale). Sea temperature: 7-8C.

Warnings (next 24 Hours)

Gale Nil
Wind Shear Nil
Lightning Risk Low
Confidence Low

Criteria Levels

Winds 10m Spd
35 kts

UTC	Winds										Weather									
	10m				50m			100m			Type (text)	Air				Cloud		MSLP (hPa)		
	Dir (text)	Spd (kts)	Risk (kts)	Gust (kts)	Dir (deg)	Spd (kts)	Gust (kts)	Dir (deg)	Spd (kts)	Gust (kts)		T10 (°C)	T50 (°C)	T100 (°C)	Td10 (°C)	Vis10 (text)	RH (%)		Base (ft)	Frac (%)
Saturday 22 March 2025																				
03	SE	22	25	28	140	30	38	150	35	44	nsw	9	8	8	6	md/gd	85	3500	75	1002
06	SE	25	28	32	140	33	42	140	38	48	ra	8	8	8	6	md/gd	87	2000	79	1000
09	SSE	22	25	28	150	30	38	150	34	43	ra	8	8	8	7	md/gd	92	1000	78	1000
12	SSE	21	24	27	160	28	35	160	31	39	ra	9	8	8	7	good	92	1000	79	1001
15	SSE	20	23	25	160	27	34	160	31	39	ra	9	8	8	7	good	92	1000	79	1002
18	SSE	15	17	20	160	23	29	160	26	33	shra	8	8	7	7	good	95	1000	79	1003
21	SSE	13	14	17	160	18	24	160	20	26	ra	8	7	7	7	good	95	500	80	1006
Sunday 23 March 2025																				
00	SE	11	14	15	150	15	20	160	17	22	ra	8	7	7	6	good	93	1000	80	1007
03	ESE	15	18	20	130	20	26	150	22	29	ra	7	7	6	6	mod	95	1000	80	1009
06	SE	11	18	15	140	15	20	150	16	22	ra	7	7	6	6	md/gd	93	1000	80	1010
09	ESE	11	17	16	130	15	20	150	17	22	ra	7	6	6	5	md/gd	91	1000	79	1012
12	SSE	11	16	15	160	12	17	160	13	17	ra	7	7	6	5	good	88	1000	79	1012
15	SSE	9	12	13	170	10	14	170	10	14	nsw	7	7	6	5	good	85	1000	78	1013
18	NW	6	9	9	300	10	14	280	11	15	dz	7	7	6	5	good	87	1000	68	1014
21	NW	5	6	8	320	8	12	320	9	13	nsw	7	6	6	4	good	84	nlc	75	1015
Monday 24 March 2025																				
00	W	4	4	7	280	7	10	290	9	13	nsw	6	6	6	2	good	78	nlc	77	1016
03	WSW	6	7	8	250	9	11	250	11	13	nsw	6	6	6	3	good	79	nlc	78	1015
06	SW	8	9	10	230	12	14	240	13	16	nsw	6	6	6	3	good	79	nlc	78	1014
09	SW	10	11	13	220	13	16	220	15	18	nsw	7	7	6	3	good	76	nlc	78	1014
12	SW	12	13	16	220	15	19	220	16	20	ra	8	8	8	4	good	72	nlc	78	1013
15	SW	12	14	17	230	17	21	230	19	24	ra	9	9	9	5	md/gd	78	3500	79	1011
18	WSW	15	17	21	250	23	29	250	27	32	ra	9	9	8	7	good	87	1000	79	1010



Single Location Forecast - 7 Day

Scapa Flow (58°53'N 003°02'W)

Scapa Flow
Orkney Harbour DTNO_REF_19049545

offshore@dtn.com
+31 (0)30 8082022 (Utrecht office)
+44 (0)1224 042444 (Aberdeen office)
www.meteogroupoffshore.com

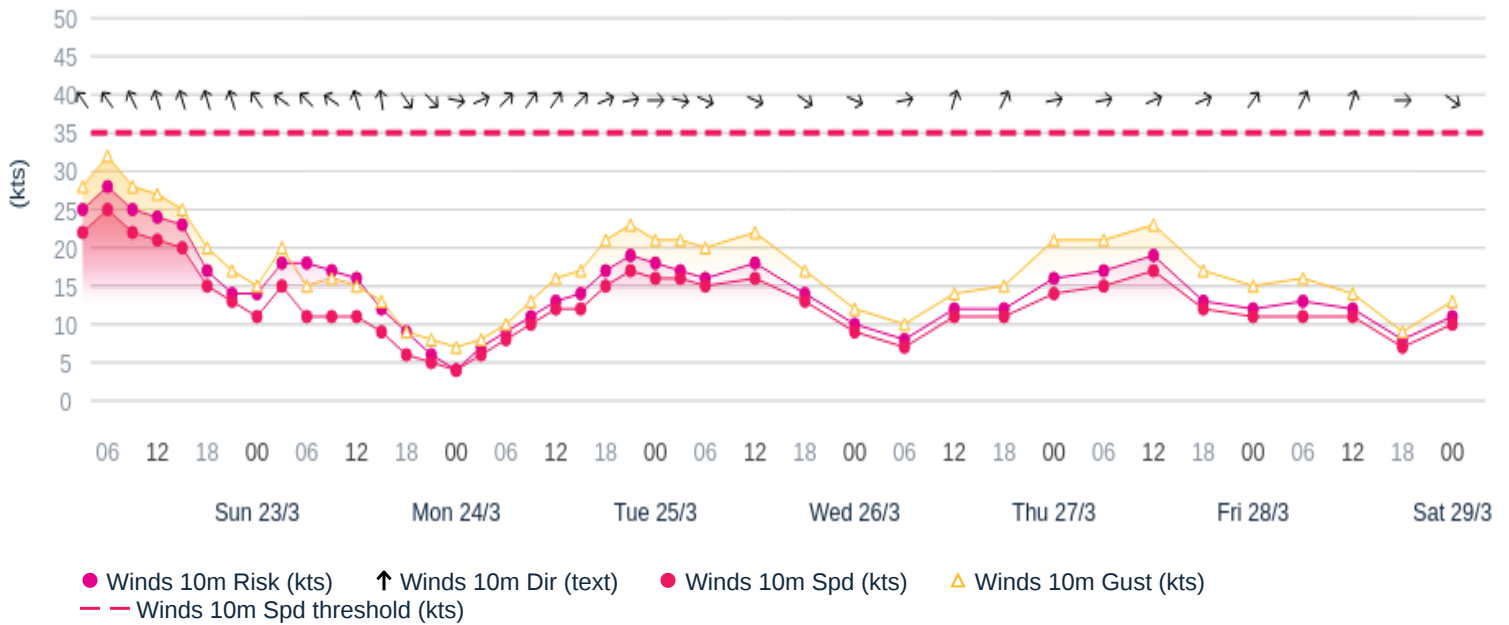
Issued on 22 March 2025, 04:01 UTC

Winds											Weather									
UTC	10m				50m			100m			Type (text)	Air						Cloud		MSLP (hPa)
	Dir (text)	Spd (kts)	Risk (kts)	Gust (kts)	Dir (deg)	Spd (kts)	Gust (kts)	Dir (deg)	Spd (kts)	Gust (kts)		T10 (°C)	T50 (°C)	T100 (°C)	Td10 (°C)	Vis10 (text)	RH (%)	Base (ft)	Frac (%)	
21	WSW	17	19	23	260	27	33	260	31	37	ra	9	9	9	7	good	89	1000	79	1010
Tuesday 25 March 2025																				
00	W	16	18	21	270	24	29	270	27	33	ra	9	9	9	8	good	92	500	80	1010
03	W	16	17	21	280	23	28	280	26	31	ra	9	8	8	7	good	90	1000	80	1011
06	WNW	15	16	20	290	21	26	290	24	29	ra	8	8	8	6	good	88	1000	79	1012
12	WNW	16	18	22	290	22	27	300	24	30	dz	9	8	8	6	good	81	3500	76	1016
18	WNW	13	14	17	300	19	24	300	21	26	nsw	8	8	7	5	good	82	1000	71	1018
Wednesday 26 March 2025																				
00	WNW	9	10	12	290	13	16	300	15	18	nsw	8	7	7	5	good	84	1000	75	1019
06	WSW	7	8	10	260	12	14	270	14	16	nsw	7	7	7	4	good	82	3500	77	1018
12	SSW	11	12	14	190	15	18	190	16	20	dz	9	8	8	5	good	78	2000	78	1015
18	SSW	11	12	15	220	19	23	230	22	26	ra	8	8	8	6	good	87	1000	78	1008
Thursday 27 March 2025																				
00	WSW	14	16	21	250	21	27	250	24	30	ra	8	7	7	5	good	82	1000	64	1007
06	WSW	15	17	21	250	23	29	250	26	32	dz	7	6	6	4	good	82	2000	53	1006
12	WSW	17	19	23	250	25	32	240	30	36	nsw	8	8	7	4	good	78	2000	60	1006
18	WSW	12	13	17	250	22	27	250	27	31	ra	7	7	6	5	good	87	2000	75	1004
Friday 28 March 2025																				
00	SW	11	12	15	220	17	22	220	20	24	ra	7	7	6	5	good	84	2000	77	1003
06	SSW	11	13	16	210	17	21	210	20	24	ra	7	7	6	4	good	82	2000	67	1000
12	SSW	11	12	14	210	15	18	220	17	20	dz	8	8	8	4	good	73	n/c	33	997
18	W	7	8	9	280	13	15	290	16	17	ra	7	7	7	5	good	82	2000	40	996
Saturday 29 March 2025																				
00	WNW	10	11	13	310	18	21	320	22	25	dz	7	6	6	4	good	83	1000	68	1000

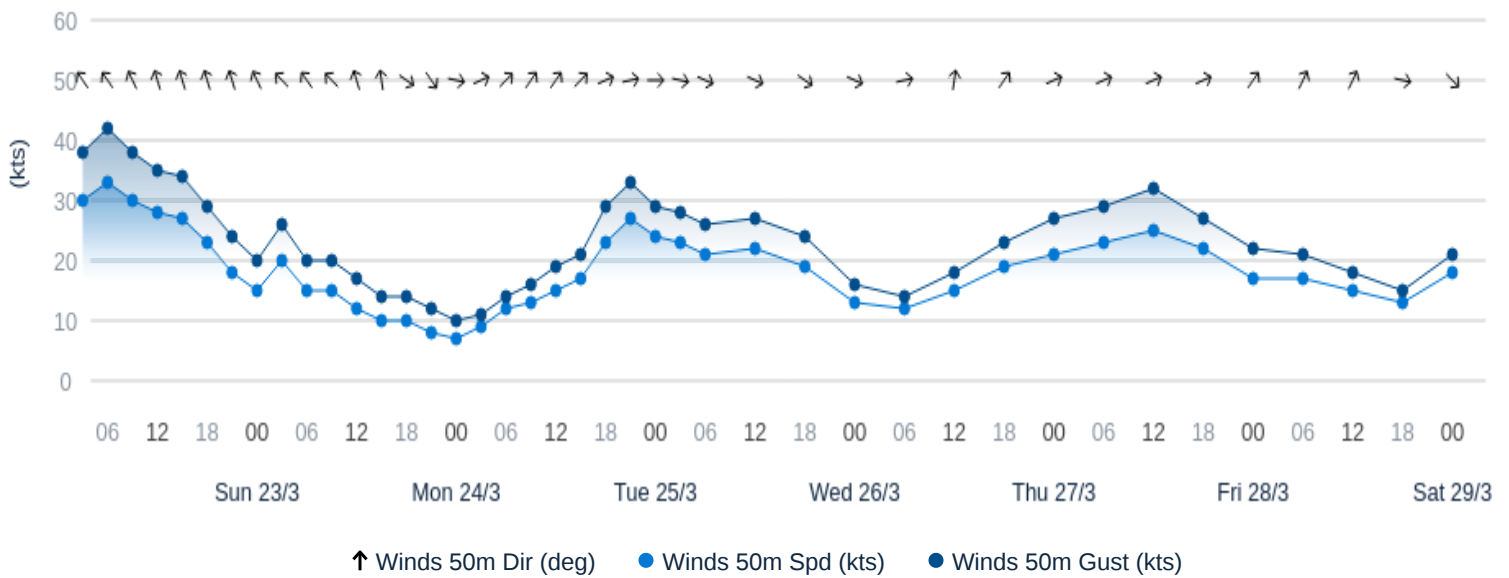
WX=Weather, FG=Fog, DZ=Drizzle, RA=Rain, SN=Snow, SHRA=Rainshower, SHSN=Snowshower, GR=Hail, TS=Thunderstorm, NSW=No sig weather

Copyright 2025© DTN

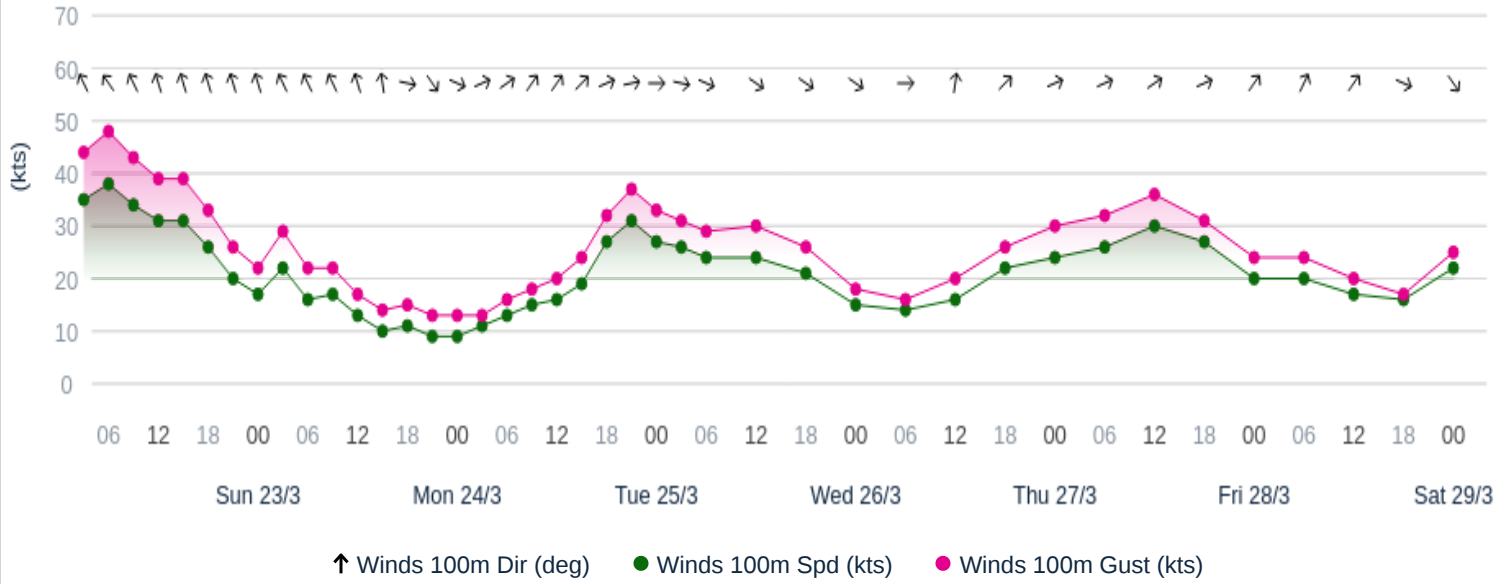
10m Wind Graph - 7 Day Scapa Flow



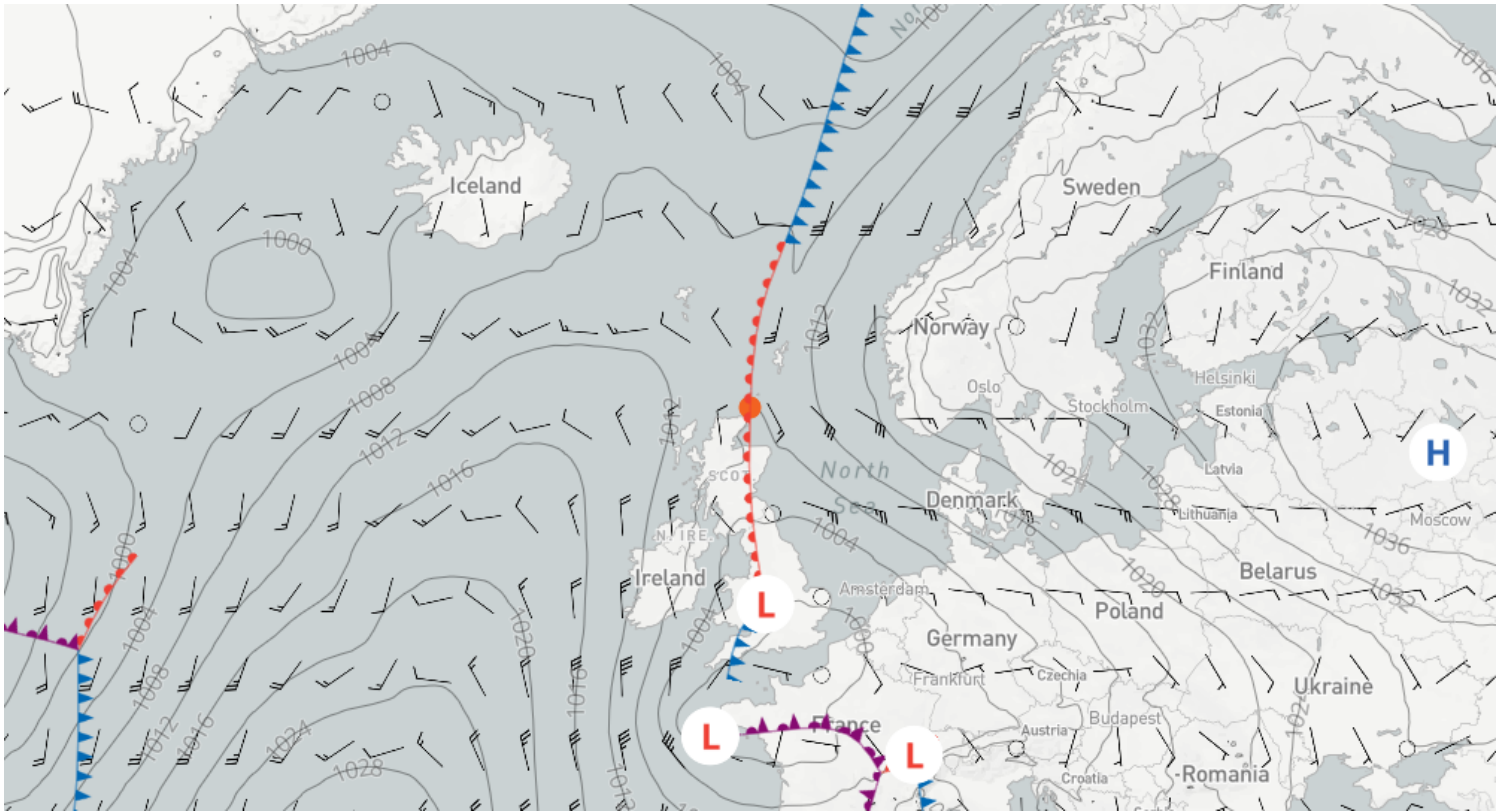
50m Wind Graph - 7 Day Scapa Flow



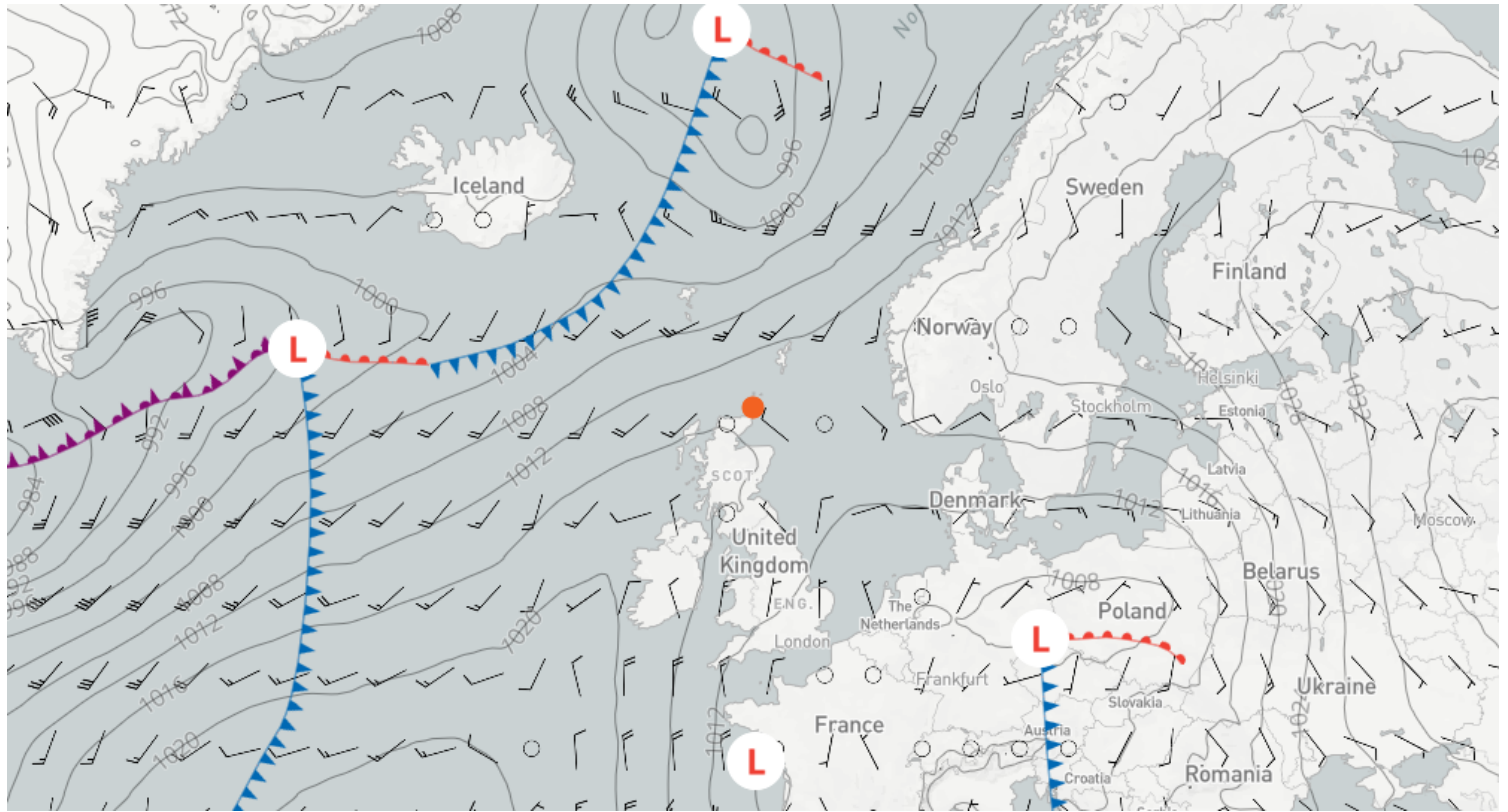
100m Wind Graph - 7 Day Scapa Flow



Issued on 22 March 2025, 00:00 UTC | Forecast for 23 March 2025, 00:00 UTC (+24) | 10m Wind Speed + Surface Pressure and Fronts



Issued on 22 March 2025, 00:00 UTC | Forecast for 24 March 2025, 00:00 UTC (+48) | 10m Wind Speed + Surface Pressure and Fronts



page intentionally left blank